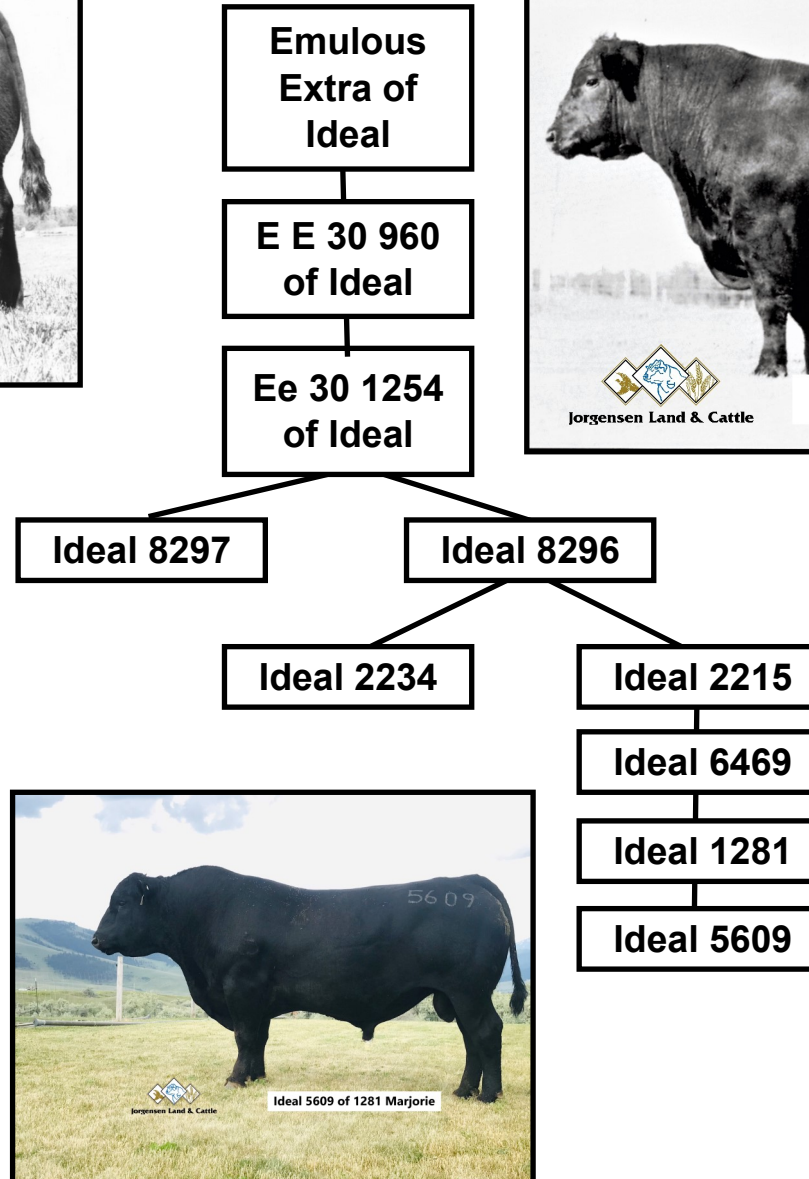
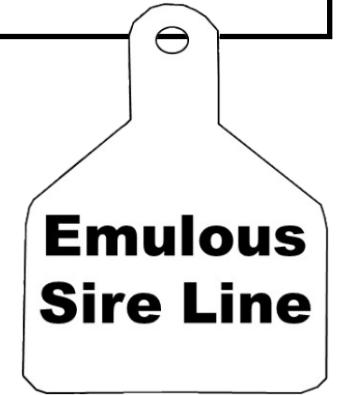
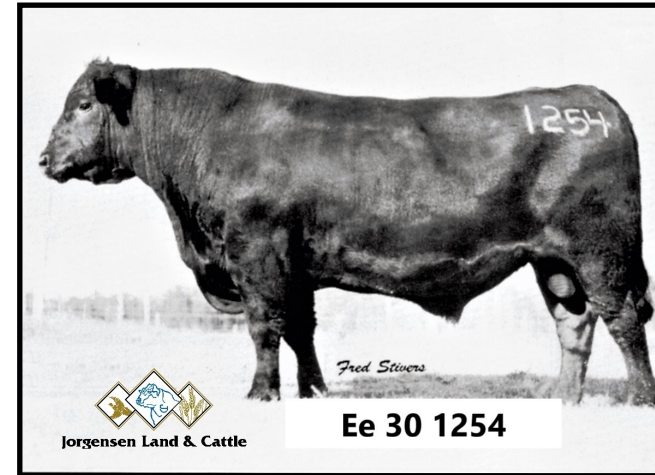
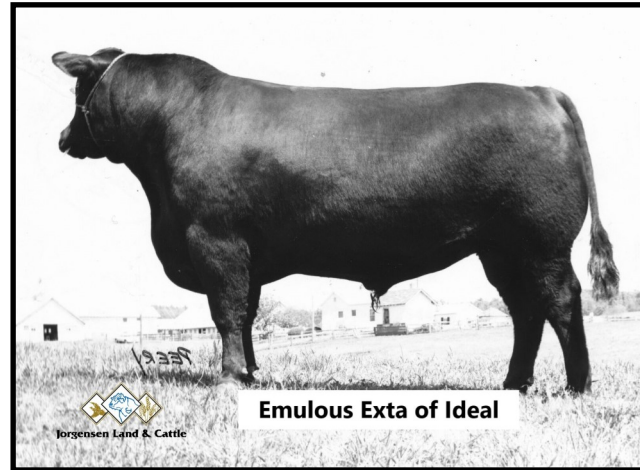


Emulous Sire Line



Emulous Sire Line

The Emulous line was largely developed during the Certified Meat Sire Program period which measured only a sire's progeny in meaningful contemporary group sizes compared to a reference sire. Selection within this environment resulted in improved gain-ability and carcass merit. In addition, the Emulous cattle were also very sound cattle who were noted for fertility and longevity.

Martin Jorgensen first began incorporating Emulous breeding in 1971 and produced Emulous Extra of Ideal in 1971. Generations of breeding and selection generated the great, line-bred "E E 4286" cow, the mother of both Pathfinder sire known as Ideal 1418 and tremendous "Ideal 4465" cow.

Genetic Contributions: Fertility, Longevity, Sound Feet & Legs, Gain-ability, and Carcass Merit