



Jorgensen Land & Cattle

First Ever

Fall Pasture Ready
SMARTBULLS™ SALE

Oct. 2, 2020 • 6:30 PM (Central Time)

At the Farm in Ideal, SD

1-800-548-2855

or watch & bid on



SMARTBULLS™ is a Trademark of Jorgensen Land & Cattle

TERMS & CONDITIONS



Dear Cattlemen & Cattlewomen,

We are eagerly anticipating Friday, October 2nd, 2020 as it will mark the *next step* for Jorgensen Land & Cattle: our first ever national, **Fall Pasture Ready SMARTBULLS™ Sale**.

We first began selling **SMARTBULLS™**, over 20 years ago and their popularity continues to grow because they have the capacity and age to breed your cows without a bunch of pampering. Cattlemen love them because they can breed more cows with fewer bulls than younger bulls can.

The **IDEAL BEEF EVALUATIONSM** (or **IBESM**) increases the genetic predictive power of our **SMARTBULLS™**. The **IBE** is a proprietary genetic evaluation that was developed through a cooperative project between Jorgensen Land & Cattle and Zoetis. It combines the vast phenotypic dataset (performance, calving, and reproduction) of Jorgensen Land & Cattle, with the genetic and analytical teams of Zoetis — along with their gold standard HD50K genomic test. We are extremely excited about the insights that the Ideal Beef Evaluation provides. These insights help us provide more accurate genetic recommendations to our customers.

We want to thank our customers, family and friends for their continued support and belief in our breeding program at Jorgensen Land & Cattle. We appreciate each of you!

We invite you to join us in-person or through DVAuction.com for the sale. We welcome your calls or emails with any questions you might have. Our toll-free number is 1-800-548-2855 or email us at info@jorgensenfarms.com

Thank you,

The Jorgensen Family

SMARTBULLS™ is a Trademark of Jorgensen Land & Cattle (JLC)

IDEAL BEEF EVALUATIONSM & **IBESM** are jointly held Servicemarks of JLC and Zoetis

SALE LOCATION:

The sale will be held at the farm headquarters in Ideal, SD.

SALE DAY TELEPHONES:

Greg Cell Phone: 605-840-2855

Bryan Cell Phone: 605-840-9005

Cody Cell Phone: 605-840-1780

Nick Cell Phone: 605-840-0316

David Thomas: 865-257-1873

INSPECTION OF CATTLE:

Bulls are penned at the farm and available for inspection; please call to arrange times.

HEALTH: All cattle will be sold with health papers for interstate shipment.

FREE REGIONAL DELIVERY: Jorgensen Land & Cattle will cooperate in arranging trucking, offering free regional delivery and a maximum cost of \$100 per bull anywhere in the lower 48 states to a central location convenient to you. Please contact Karrisa Bartels at 800-548-2855 (BULL) to arrange delivery.

TERMS AND CONDITIONS: Cattle will sell under the suggested Terms and Conditions of the American Angus Association (https://www.angus.org/pub/suggested_sale_terms.pdf).

INSURANCE: Insurance will be available sale day. Please inform the clerk at the time of settlement if you want insurance. We take every precaution for the care and safety of your purchases; however, we urge all buyers to insure purchases for safe delivery to you.

LIABILITY: All persons who attend the sale do so at their own risk, legal or otherwise, for their safety or the behavior of the animals.

ANNOUNCEMENTS: Any announcements from the auction block will take precedence over the information listed in this sale book. A supplement sheet will be available on sale day with up-to-date breeding and performance information.

ABSENTEE BUYER OPTIONS: If you cannot attend, you may still participate by sending your bid to the Auctioneer or a member of the Jorgensen team, or you can View & Bid in Real-Time on DVAuction (<https://www.dvauction.com/>).

AUCTIONEER: Roger Jacobs



JORGENSEN LAND & CATTLE
31250 265TH STREET
IDEAL, SD 57541-9230

Explanation of Performance Records Provided through the



LOT #	Bull Name	Assn 1
Date Of Birth:	SIRE LINE: 2	Reg # 1
SIRE: Name of Sire		

IDEAL BEEF EVALUATIONSM

BW	WW	YW	ADG
3	4	5	6
Ratio	7	8	
Selection		Indexes	
JVI-H		9	
JVI-C		10	

	EPD	% Rank
BW	11	%
WW	12	%
YW	13	%
SC	14	%
Milk	15	%
IMF	16	%
REA	17	%

NOTES: 18



- 1) ASSN & REG #:** Registering Association and Registration Number
- 2) Sire Line** The Y-chromosome can only be passed from father to son and certain traits seem to follow the sire line. Five Sire Lines represent the majority of the bulls in this sale: Rito, Eldorado, Traveler, Emulous, & Emulation.

Individual Performance Data

- 3) BW:** Individual's Birth Weight .

4 & 7) WW & Ratio:

Weaning Weight adjusted to 205 days of age. WW Ratio indicates pre-weaning growth relative to contemporaries.

5 & 8) YW & Ratio:

Yearling Weight adjusted to 365 days of age. YW Ratio indicates both pre- and post-weaning gain relative to contemporaries.

- 6) ADG:** Average Daily Gain during the test feeding period & measures the growth rate of individual bull calves on feed.

The Jorgensen Versatility Indexes were developed for helping spot bulls suitable for use on Heifers (**JVI-H**) and for use on Cows (**JVI-C**).

See pages 62 & 63 for more information.

- 9) JVI-H:** A combined Index of traits that helps simplify selection for bulls that are better suited for use on heifers, where lower Birth Weight has more impact than growth, Milk, or carcass traits. Higher numbers are better. Bulls with individual BW greater than 85 lbs or a BW EPD greater than 2.5 receive a JVI-H mark of **Not Recommended** for heifers. You can use your judgement to balance bulls with higher JVI-H scores along with their BW EPDs.

- 10) JVI-C:** The JVI-C index reduces the impact of BW and increases the impact of growth (WW & YW), Milk, SC, & carcass traits. Higher JVI-C scores indicate better overall genetic merit; higher scores indicate better performing calves.

EPD & % Rank EPDs are calculated in the Ideal Beef Evaluation through work with Zoetis Genetics, and are current as of 9/9/20. % Rank tells you how that animal's EPD ranks against all of the other animals within the Ideal Beef Evaluation; it is a relative term.

- 11) BW:** Prediction of the sire's probable influence on Birth Weight of his calves; expressed in pounds.
- 12) WW:** Predictor of a sire's ability to transmit pre-weaning growth to his calves; expressed in pounds.
- 13) YW:** Predictor of a sire's ability to transmit growth to his calves; expressed in pounds.
- 14) SC:** Predictor of a sire's ability to impact the scrotal size of his calves; expressed in centimeters.
- 15) MILK:** Predictor of a sire's genetic merit for milk production in his daughters; expressed in pounds of calf weaned due to milking ability of his daughters.
- 16) IMF:** Predictor of the difference in a sire's calves for Percent Intramuscular Fat (IMF) in the ribeye. Percent IMF is the common ultrasound term for Marbling and higher numbers are indicative of higher Carcass Quality Grades.
- 17) REA:** Predictor of the difference in ribeye area of a sire's progeny; expressed in square inches.
- 18) NOTES:** Notes & highlights about this lot.

The **IDEAL BEEF EVALUATIONSM** and **IBESM** are Service Marks, jointly owned by Jorgensen Land & Cattle and Zoetis

ELDORADO SIRE LINE

Eldorado 156 of Ideal was a long-spined, true performance Pathfinder Sire who left his mark on this herd and many others.

Today, nearly 40 years after his birth, his progeny still hold impressive weaning and yearling weight ratios of 102 and 103, respectively. The Eldorado line developed a well-earned reputation for growth and maternal traits.

Today, a ride through our herd will cause you to notice the broody yellow-tag cows sired by Ideal 3542 and Ideal 9524, and we are impressed by the young daughters of Ideal Encore.

Genetic Contributions:

Length of Body, Growth,
Outstanding Females.



LOT 1	Ideal 7830 OF 3444 Marjorie	AAA
DOB: 02/10/17	SIRE LINE: Eldorado	# 18981268

SIRE: **Ideal 3444 of 5570 Jilt**

IDEAL BEEF EVALUATION™

BW	WW	YW	ADG
68 lbs	570 lbs	1127 lbs	3.48 lbs
Ratio	92	92	
Selection		Indexes	
JVI-H		123	
JVI-C		125	

	EPD	% Rank
BW	1.2	32%
WW	55	15%
YW	113	3%
SC	0.50	27%
Milk	30	8%
IMF	0.38	11%
REA	0.34	29%

NOTES: Low BW Heifer bull with good growth. Ranks in Top 1/3 for BW, yet Top 3% for Yearling Weight.



LOT 2	Ideal 8798 of 5762 Jilt	AAA
DOB: 03/02/18	SIRE LINE: Eldorado	# 19274225

SIRE: **Ideal 5762 of 9524 Blkbrd**

IDEAL BEEF EVALUATION™

BW	WW	YW	ADG
77 lbs	610 lbs	1116 lbs	3.16 lbs
Ratio	108	100	
Selection		Indexes	
JVI-H		108	
JVI-C		108	

NOTES: Good Heifer Bull.

	EPD	% Rank
BW	1.4	35%
WW	46	42%
YW	81	52%
SC	0.46	31%
Milk	27	20%
IMF	0.41	8%
REA	0.02	93%

LOT 3	Ideal Eldorado 8Q35	IBESM
DOB: 04/05/18	SIRE LINE: Eldorado	# 63155

SIRE: **Ideal 3585 of 9524 Blkbrd**

IDEAL BEEF EVALUATION™

BW	WW	YW	ADG
75 lbs	582 lbs	1262 lbs	4.25
Ratio	95	127	
Selection		Indexes	
JVI-H		101	
JVI-C		96	

NOTES: A low BW Heifer bull with some muscle.

	EPD	% Rank
BW	0.6	21%
WW	36	77%
YW	72	73%
SC	0.05	77%
Milk	21	57%
IMF	-0.07	97%
REA	0.41	17%



WE SURE HOPE WE GET TO SEE YOUR FACE AT OUR SALE BUT IF THAT'S NOT AN OPTION WE'LL BRING THE SALE TO YOU



Jorgensen Land & Cattle



In-Person

We enjoy getting together with friends, family, & customers at Jorgensen Land & Cattle. There is something special about having a big crowd of folks at our sales; we love watching people visit, look through the bulls, talk cattle & catch-up on family. We sure hope you can attend. However, if you can't join us this year, we have been working to make sure you can participate from your home, farm or another convenient location.

Visit Ahead of the Sale

For decades, we have done business by phone & on a hand-shake. That won't change! We would be happy to schedule a time for you to look through the bulls or talk you through them by phone ahead of the sale. We can talk about what kind of bulls you want this year and we will arrange for someone to represent you at the sale, based on your instructions. It is simple and we guarantee your satisfaction. Just call us: 800-548-BULL (2855).

Watch & Bid On-Line & in Real-Time

If you have high-speed internet service, On-line bidding is a great way to participate - if you just can't be here in-person. In 2019, about 15% of our lots were sold through www.DVAuction.com. In 2020, the percentage of lots sold on-line increased to 33%.

Please register ahead to access DVAuction On-Line bidding; (1) Create an Account, and then (2) Apply for Bidding **at least 24-hours ahead of the sale.**

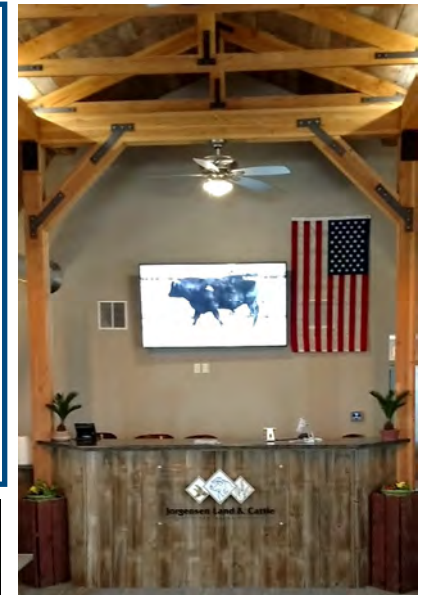
Unfortunately, dial-up or satellite internet generally will not keep-up and is not recommended for On-line bidding.

Real-Time Phone Bidding

Real-time phone bidding is more cumbersome than arranging for someone to represent you ahead of time. Our sale moves faster than most bull sales. The average time for a bull to be sold is less than one minute, so it works best for us to talk ahead of the sale and establish a game plan for you. Please contact one of the individuals listed below to visit about what you need and how we can work with you.

- 1) Create an account at www.dvauction.com under the "Create New Account" tab
- 2) Apply for bidding by clicking the "Details" tab at least 24 hours prior to the sale
- 3) Tune in for the sale and make your purchases –or– Let DVAuction represent your bid

If you have questions, please call:
402-316-5460



DVAuction can represent your bid!

Through DVAuction, you can place limits on your bid and DVAuction will automatically increase your bid up to your preset limit.

Greg's Cell : 605 / 840-2855

Nick's Cell: 605 / 840-0316

Bryan's Cell: 605 / 840-9005

David's Cell: 865 / 257-1873

Cody's Cell: 605 / 840-1780

Jorgensen Land & Cattle

31250 265th Street • Ideal, SD 57541-9230

800 / 548-BULL (2855)

TRAVELER SIRE LINE

QAS Traveler 23-4 is the best-known son of "Band 105". A 2017 Angus Foundation-funded research project revealed that "Traveler" was the most influential sire in the Angus breed, as measured by genetic contribution. His genetics make up about 10% of Angus animals born today. Today, his daughters number over 9,000 cows & post a combined 101 WW ratio. QAS Traveler 23-4 produced numerous sons who have had a tremendous positive influence on the Jorgensen herd and the entire Angus breed.

Genetic Contributions:

Calving Ease, Marbling,
Functional Females.



Ideal 4223 of 1168 Blkbrd

LOT 4	Ideal 8232 of 1168 Rose	AAA
DOB: 02/14/18	SIRE LINE: Traveler	# 19273503

SIRE: Ideal 1168 of 9814 Lady

IDEAL BEEF EVALUATION™

BW	WW	YW	ADG
70 lbs	491 lbs	1109 lbs	3.86 lbs
Ratio	87	100	
Selection		Indexes	
JVI-H		133	
JVI-C		126	

	EPD	% Rank
BW	-1.7	4%
WW	37	73%
YW	90	30%
SC	0.37	42%
Milk	14	94%
IMF	0.34	18%
REA	0.08	89%

NOTES: One of the top JVI-H scores in this sale.

A bull with a super low BW GE-EPD, ranking in the Top 4%. His calves don't stay small, though; he has a YW GE-EPD in the Top 30%.



LOT 5	Ideal 8429 of 4223 Blkbrd	AAA
DOB: 02/19/18	SIRE LINE: Traveler	# 19273757

SIRE: Ideal 4223 of 1168 Blkbrd

IDEAL BEEF EVALUATION™

BW	WW	YW	ADG
78 lbs	552 lbs	1046 lbs	3.09
Ratio	98	94	

Selection		Indexes	
JVI-H		120	
JVI-C		114	

	EPD	% Rank
BW	-0.8	8%
WW	42	57%
YW	81	52%
SC	0.22	60%
Milk	30	7%
IMF	0.35	17%
REA	0.06	90%

NOTES: A high indexing heifer bull (120). His calves should be born light, but should be catch-up to the middle of the pack at Weaning and Yearling.

Watch & bid online for FREE at **DVAuction**
Broadcasting Real-Time Auctions

Can't make the sale? Bid from home with DVAuction's "real time" internet Bidding Service

Buying is as easy as 1, 2, 3...

1. Create an account at www.dvauction.com under the "Create New Account" tab
2. Apply for bidding approval by clicking on the "Apply for Bidding" tab at least 24 hours prior to the auction. A DV representative will notify you once you have been approved
3. Tune in for the sale and make your purchases

After the sale, contact the sale manager or owner to arrange transportation and payment. High Speed Internet is required for successful bidding.

Proxy Bidding - If you can't make time to watch the sale, register a proxy bid and let our system represent your bid while you're away

Having troubles? During the auction, you can type a message to the operator at any time for assistance. Our full-time support team can also always be reached at (402) 316-5460.

DVAuction
Broadcasting Real-Time Auctions

The Livestock Industry's Leading Online Marketplace!



LOT 6	Ideal Traveler 8Q19	IBESM
DOB: 02/08/17	SIRE LINE: Traveler	# 62974
SIRE: Ideal 1168 of 9814 Lady		

IDEAL BEEF EVALUATIONSM

BW	WW	YW	ADG
73 lbs	637 lbs	1251 lbs	3.84 lbs
Ratio	104	111	
Selection		Indexes	
JVI-H		134	
JVI-C		124	

	EPD	% Rank
BW	-2.9	1%
WW	36	76%
YW	82	50%
SC	0.31	50%
Milk	23	42%
IMF	0.17	64%
REA	0.48	9%

NOTES: Lot 6 is a high indexing bull for heifers (134), and should pass along muscle to his calves as indicated by his REA EPD.

LOT 8	Ideal Traveler 8A16	IBESM
DOB: 02/09/18	SIRE LINE: Traveler	# 63117
SIRE: Ideal 1168 of 9814 Lady		

IDEAL BEEF EVALUATIONSM

BW	WW	YW	ADG
80 lbs	572 lbs	1198 lbs	3.91 lbs
Ratio	93	106	
Selection		Indexes	
JVI-H		124	
JVI-C		115	

	EPD	% Rank
BW	-1.8	3%
WW	32	84%
YW	76	66%
SC	0.54	22%
Milk	24	37%
IMF	0.21	52%
REA	0.48	10%

NOTES: Lot 8 is a low BW bull who throws calves with Muscle (REA EPD in Top 10%).

LOT 7	Ideal Traveler 8A08	IBESM
DOB: 02/10/18	SIRE LINE: TRAVELER	# 63140
SIRE: Ideal 1168 of 9814 Lady		

IDEAL BEEF EVALUATIONSM

BW	WW	YW	ADG
77 lbs	610 lbs	1196 lbs	3.66 lbs
Ratio	100	106	
Selection		Indexes	
JVI-H		130	
JVI-C		121	

	EPD	% Rank
BW	-2.2	2%
WW	36	77%
YW	83	48%
SC	0.44	34%
Milk	27	19%
IMF	0.32	23%
REA	0.30	39%

NOTES: Another good heifer bull defies the notion that low-BW calves won't gain. This bull ranks Top 2% for BW EPD, yet his calves should be in the top half of the herd at Yearling.



LOT 9	Ideal 8428 of 4223 Jilt	AAA
DOB: 02/18/18	SIRE LINE: Traveler	# 19273734
SIRE: Ideal 4223 of 1168 Blkbrd		

IDEAL BEEF EVALUATIONSM

BW	WW	YW	ADG
82 lbs	521 lbs	1079 lbs	3.49
Ratio	92	97	
Selection		Indexes	
JVI-H		116	
JVI-C		108	

	EPD	% Rank
BW	-0.8	8%
WW	38	70%
YW	85	43%
SC	-0.35	98%
Milk	25	28%
IMF	0.11	80%
REA	0.19	68%

NOTES: A low-BW Heifer bull who is high indexing (JVI-H = 116) with above average YW.



LOT 10	Ideal Traveler 8L51	IBESM
DOB: 03/14/18	SIRE LINE: Traveler	# 63871
SIRE: Ideal 4223 of 1168 Blkbrd		

IDEAL BEEF EVALUATIONSM

BW	WW	YW	ADG
79 lbs	652 lbs	1087 lbs	2.72 lbs
Ratio	100	96	
Selection		Indexes	
JVI-H		125	
JVI-C		119	

	EPD	% Rank
BW	-0.9	7%
WW	40	63%
YW	85	41%
SC	0.25	57%
Milk	22	53%
IMF	0.27	32%
REA	0.38	21%

NOTES: This Traveler line bull is a high-scoring JVI-H bull (125) whose calves should grade well and display muscling.

LOT 11	Ideal Traveler 8L38	IBESM
DOB: 03/14/18	SIRE LINE: TRAVELER	# 63815
SIRE: Ideal 4223 of 1168 Blkbrd		

IDEAL BEEF EVALUATIONSM

BW	WW	YW	ADG
78 lbs	561 lbs	1145 lbs	3.65 lbs
Ratio	86	101	
Selection		Indexes	
JVI-H		112	
JVI-C		105	

	EPD	% Rank
BW	-0.7	9%
WW	35	79%
YW	67	83%
SC	0.03	79%
Milk	24	38%
IMF	0.22	46%
REA	0.34	30%

NOTES: Top 9% for BW, yet top half for IMF and Top 30% for Ribeye.



LOT 12	Ideal Traveler 8A43	IBESM
DOB: 03/04/18	SIRE LINE: Traveler	# 63196
SIRE: Ideal 4372 of 6051 Lady		

IDEAL BEEF EVALUATIONSM

BW	WW	YW	ADG
83 lbs	633 lbs	1246 lbs	3.83 lbs
Ratio	103	110	
Selection		Indexes	
JVI-H		102	
JVI-C		104	

	EPD	% Rank
BW	2.5	
WW	45	
YW	88	
SC	0.50	
Milk	22	
IMF	0.17	
REA	0.28	

NOTES: Lot 12 has a lot of growth in him. He is a bull that we believe can be used on heifers, with Caution—that is, if you check heifers regularly during calving.



The Loft at the Jorgensen Land & Cattle headquarters will host the 2020 Fall Pasture Ready SMARTBULLS™ Sale

EMULATION SIRE LINE

The Emulation line of cattle brings a lot to the table for Cow/Calf producers. Jorgensen Land & Cattle carefully evaluated and very selectively hand-pick some Emulation sires who retain the best traits of the Emulation line and still exhibit the disposition that we want in our cattle.

Genetic Contributions: Fertility, Maternal Ability, Longevity, Excellent Udder Structure, Soundness and Carcass Quality — All traits of importance to building profitability into cow herds.



LOT 13	Ideal Emulation 8Q58	IBESM
DOB: 03/29/18	SIRE LINE: Emulation	# 63578

SIRE: **X-changer 4V17**

IDEAL BEEF EVALUATION™

BW	WW	YW	ADG
65 lbs	645 lbs	1075 lbs	2.69 lbs
Ratio	110	98	
Selection		Indexes	
JVI-H		122	
JVI-C		121	

	EPD	% Rank
BW	0.5	20%
WW	48	35%
YW	87	36%
SC	0.23	59%
Milk	16	85%
IMF	0.40	9%
REA	0.11	86%

NOTES: A well balanced heifer bull. Top 20% BW, Top 35% WW, Top 36% YW.



LOT 14	Ideal Emulation 8Q52	IBESM
DOB: 03/22/18	SIRE LINE: Emulation	# 63527
SIRE: X-changer 4V17		

IDEAL BEEF EVALUATION™

BW	WW	YW	ADG
60 lbs	550 lbs	1177 lbs	3.92bs
Ratio	94	107	
Selection		Indexes	
JVI-H		113	
JVI-C		101	

	EPD	% Rank
BW	-2.2	
WW	48	
YW	98	
SC	0.20	
Milk	22	
IMF	0.18	
REA	0.21	

NOTES: A heifer bull to look at, especially if you want to build replacement heifers for your herd.

LOT 15	Ideal Emulation 8R73	IBESM
DOB: 03/22/18	SIRE LINE: Emulation	# 63522

SIRE: **X-changer 4V17**

IDEAL BEEF EVALUATION™

BW	WW	YW	ADG
80 lbs	612 lbs	1094 lbs	3.01
Ratio	104	100	
Selection		Indexes	
JVI-H		112	
JVI-C		110	

	EPD	% Rank
BW	1.0	27%
WW	38	71%
YW	73	72%
SC	0.32	48%
Milk	11	97%
IMF	0.49	4%
REA	0.20	66%

NOTES: A bull to look at, especially if you are in an area where too much Milk can be a problem with cows breeding back. The Emulation Line is known for improving udder structure and carcass quality.



LOT 16	Ideal Emulation 8R27	IBESM
DOB: 04/26/18	SIRE LINE: Emulation	# 63658
SIRE: X-changer 4V17		

IDEAL BEEF EVALUATION™

BW	WW	YW	ADG
75 lbs	601 lbs	1001 lbs	2.50 lbs
Ratio	102	91	
Selection		Indexes	
JVI-H		103	
JVI-C		99	

	EPD	% Rank
BW	0.6	22%
WW	32	85%
YW	67	83%
SC	0.47	30%
Milk	20	65%
IMF	0.31	23%
REA	0.12	84%

NOTES: Low BW bull to look at for making replacement heifers with good udders, longevity, and soundness.

LOT 17	Ideal Emulation 8Q84	IBESM
DOB: 03/27/18	SIRE LINE: Emulation	# 63648
SIRE: X-changer 4V17		

IDEAL BEEF EVALUATION™

BW	WW	YW	ADG
70 lbs	570 lbs	1036 lbs	2.92 lbs
Ratio	97	95	
Selection		Indexes	
JVI-H		130	
JVI-C		120	

	EPD	% Rank
BW	-2.2	2%
WW	31	86%
YW	70	78%
SC	0.26	55%
Milk	11	98%
IMF	0.47	5%
REA	0.00	94%

NOTES: A very low-BW, Heifer bull whose calves should grade with the best of them; IMF = TOP 5%..



EMULOUS SIRE LINE

The Emulous line was largely developed during the Certified Meat Sire Program period which measured a sire's progeny in meaningful contemporary group sizes compared to a reference sire. Selection within this environment resulted in improved gain-ability and carcass merit. In addition, the Emulous cattle were also very sound cattle who were noted for fertility and longevity.

Genetic Contributions:

Fertility, Longevity,
Sound Feet and Legs,
Gain-ability, and
Carcass Merit.



LOT 18	Ideal Emulous 8A10	IBESM
DOB: 03/18/18	SIRE LINE: Emulous	# 63072
SIRE: Ideal 6602 of 1281 Blackcap		

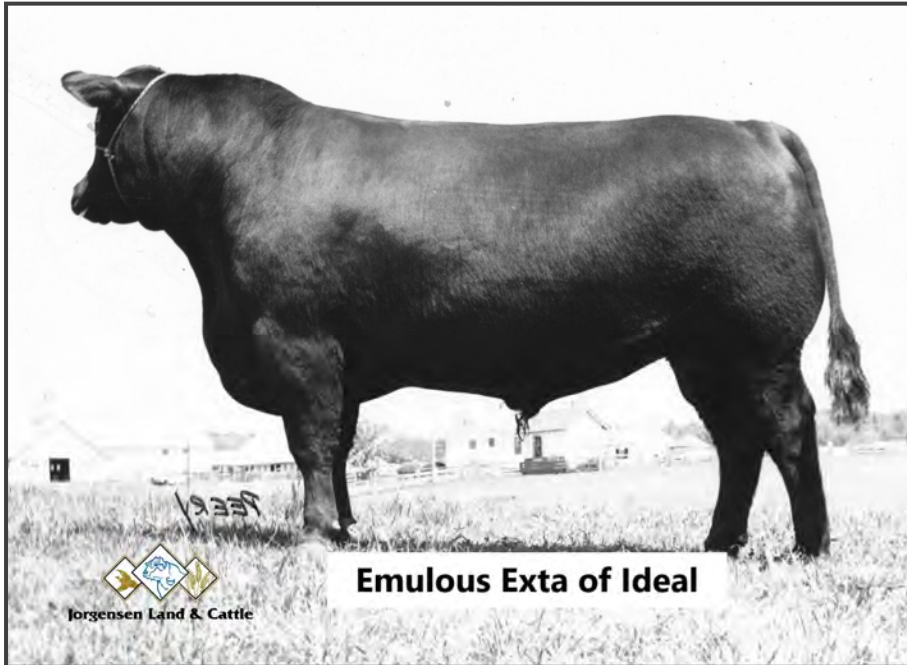
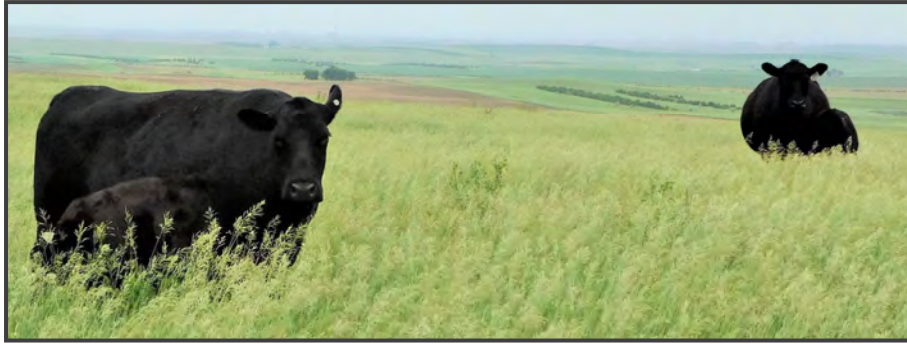
IDEAL BEEF EVALUATION™

BW	WW	YW	ADG
79 lbs	645 lbs	1200 lbs	3.47
Ratio	105	106	
Selection		Indexes	
JVI-H		110	
JVI-C		112	

	EPD	% Rank
BW	2.0	46%
WW	53	19%
YW	93	23%
SC	0.23	59%
Milk	17	82%
IMF	0.04	90%
REA	0.33	32%

NOTES: Lot 19 posted an individual 105 WW ratio and a 106 YW ratio; he has some Grow in the tank. And, he still works on heifers.





Emulous Extra of Ideal was born in 1974 and was out of one of the best daughters of RR Rito 707. The "087 cow," as she was known, had four natural calves that ratio'd 112 at Weaning—12% above a very competitive herd of cows.

RITO SIRE LINE

RR Rito 707 was the top gaining bull at the 1968 PIC Bull Test (ratio 129) and his first progeny group of 27 steers recorded an average gain ratio of 111 while grading USDA Choice (CAB grade, today). Fifty years worth of sons and daughters have compiled weaning weight and yearling weight ratios of 105, and his 453 daughters in AHIR earned a combined 102 weaning weight ratio. The Rito line continues to produce sons and daughters with muscle, appetite, growth, fertility, and efficiency.

Genetic Contributions:
Muscle, Rapid Growth,
Fertility, Carcass Merit,
Appetite, and Efficiency.



LOT 20	Ideal Rito 8L45	IBE SM
DOB: 04/08/18	SIRE LINE: Rito	# 63994
SIRE: Ideal 5154 of RES Belle		

IDEAL BEEF EVALUATION™

BW	WW	YW	ADG
78 lbs	678 lbs	1091 lbs	2.58 lbs
Ratio	104	96	
Selection		Indexes	
JVI-H		120	
JVI-C		119	

	EPD	% Rank
BW	0.8	25%
WW	54	16%
YW	95	18%
SC	0.45	32%
Milk	17	82%
IMF	-0.10	98%
REA	0.52	7%

NOTES: A Heifer bull with lots of Performance. Make sure you look at the Rito Line bulls that qualify as high JVI-H bulls. Rito bulls pass along Muscle to their calves.



LOT 21	Ideal Rito 8L82	IBE SM
DOB: 04/05/18	SIRE LINE: Rito	# 64033
SIRE: Ideal 5154 of RES Belle		

IDEAL BEEF EVALUATIONSM

BW	WW	YW	ADG
83 lbs	637 lbs	1173 lbs	3.35 lbs
Ratio	98	103	
Selection		Indexes	
JVI-H		103	
JVI-C		104	

	EPD	% Rank
BW	2.2	51%
WW	43	52%
YW	92	25%
SC	0.51	25%
Milk	17	80%
IMF	-0.02	95%
REA	0.52	7%

NOTES: Lot 21 is a growth bull. Here's a bull to pack pounds on calves. With an individual BW of 83, a BW EPD below 2.5, & a JVI-H of 103, he could be used on heifers if you check heifers regularly.

LOT 22	Ideal Rito 7067	IBE SM
DOB: 3/25/17	SIRE LINE: Rito	# 13567
SIRE: Ideal 4134 of Res Lady		

IDEAL BEEF EVALUATIONSM

BW	WW	YW	ADG
79 lbs	647 lbs	1330 lbs	4.27 lbs
Ratio	104	108	
Selection		Indexes	
JVI-H		110	
JVI-C		109	

	EPD	% Rank
BW	1.2	
WW	43	
YW	85	
SC	0.46	
Milk	20	
IMF	0.08	
REA	0.52	

NOTES: Lot 22 is a mature, stout bull with a lot of Growth!



LOT 23	Ideal Rito 8S06	IBE SM
DOB: 03/05/18	SIRE LINE: Rito	# 63611
SIRE: S A V Renown 3439		

IDEAL BEEF EVALUATIONSM

BW	WW	YW	ADG
84 lbs	610 lbs	1097 lbs	3.04 lbs
Ratio	104	100	
Selection		Indexes	
JVI-H		109	
JVI-C		108	

	EPD	% Rank
BW	1.3	33%
WW	45	47%
YW	92	27%
SC	-0.05	84%
Milk	18	78%
IMF	0.08	86%
REA	0.52	7%

NOTES: Renown sons put growth, capacity, & length into their offspring. Renown also makes broody, productive daughters.

LOT 24	Ideal Rito 8R50	IBE SM
DOB: 03/25/18	SIRE LINE: Rito	# 63660
SIRE: S A V Renown 3439		

IDEAL BEEF EVALUATIONSM

BW	WW	YW	ADG
79 lbs	682 lbs	1152 lbs	2.94 lbs
Ratio	116	105	
Selection		Indexes	
JVI-H		118	
JVI-C		117	

	EPD	% Rank
BW	0.8	24%
WW	48	36%
YW	95	19%
SC	0.45	31%
Milk	17	80%
IMF	0.08	84%
REA	0.53	7%

NOTES: Top 24% for BW and Top 19% for YW. Low BW and Growth, plus Muscle! This bull is a complete package!



ELDORADO SIRE LINE

Ideal Encore of 9524 Lady is the standard bearer of the Eldorado Line, today. He is the heaviest YW sire (1,469 lbs) ever created in the 60+ year history of Jorgensen Land & Cattle. He blew-away all of his contemporaries, posting a 125 YW ratio and a 128 ADG ratio.

His calves are born light (98 BW Ratio), yet post a combined 103 YW ratio. Best of all, his daughters are making great young cows. We just weaned our Wet-2 yr old daughters and the Encore daughters posted the highest progeny ratio of any sire group — a 105 ratio.

We like him so much that we bred 200 cows to him in each of the last two breeding seasons.

Semen available.



LOT 25	Ideal Eldorado 8T97	IBESM
DOB: 03/24/18	SIRE LINE: Eldorado	# 65647

SIRE: Ideal 3444 of 5570 Jilt

IDEAL BEEF EVALUATION™

BW	WW	YW	ADG
102 lbs	618 lbs	1165 lbs	3.42 lbs
Ratio	114	108	
Selection		Indexes	
JVI-H		Not Recommended	
JVI-C		114	

	EPD	% Rank
BW	5.4	96%
WW	67	1%
YW	116	2%
SC	0.60	16%
Milk	22	51%
IMF	0.18	61%
REA	0.37	23%

NOTES: Lot 25 is a bull with some pure Growth in him. He boasts one of the top YW EPDs in the Sale, Top 2%!



LOT 26	Ideal Eldorado 8A62	IBESM
DOB: 02/27/18	SIRE LINE: Eldorado	# 63146

SIRE: Ideal 3585 of 9524 Bickbrd

IDEAL BEEF EVALUATION™

BW	WW	YW	ADG
85 lbs	661 lbs	1356 lbs	4.35 lbs
Ratio	108	120	
Selection		Indexes	
JVI-H		Not Recommended	
JVI-C		117	

	EPD	% Rank
BW	3.0	69%
WW	56	12%
YW	111	4%
SC	0.39	40%
Milk	18	76%
IMF	0.27	33%
REA	-0.03	94%

NOTES: We grow bulls on a ration that has a high percentage of forage in it and there aren't many bulls that can gain in excess of 4.0 lbs per day ... This bull gained 4.35 lbs / day. His calves will GROW!

LOT 27	Ideal Eldorado 8E77	IBESM
DOB: 03/31/18	SIRE LINE: Eldorado	# 63779

SIRE: Ideal Eldorado 5E3

IDEAL BEEF EVALUATION™

BW	WW	YW	ADG
101 lbs	691 lbs	1451 lbs	4.75
Ratio	110	114	
Selection		Indexes	
JVI-H		Not Recommended	
JVI-C		104	

	EPD	% Rank
BW	6.3	99%
WW	63	3%
YW	110	4%
SC	0.88	3%
Milk	21	55%
IMF	0.11	81%
REA	0.31	36%

NOTES: The Eldorado Line has always been known for growth and this bull certainly follows that pattern. Top 4% for YW. His calves will mash the scales.



LOT 28	Ideal Eldorado 8G41	IBE SM
DOB: 04/10/18	SIRE LINE: Eldorado	# 65414
SIRE: Ideal 5802 of 9524 Marjorie		

IDEAL BEEF EVALUATIONSM

BW	WW	YW	ADG
86 lbs	625 lbs	1153 lbs	3.30 lbs
Ratio	108	103	
Selection		Indexes	
JVI-H		Not Recommended	
JVI-C		104	

	EPD	% Rank
BW	2.8	965
WW	48	33%
YW	99	13%
SC	0.60	17%
Milk	27	20%
IMF	0.10	81%
REA	0.23	58%

NOTES: Top 33% WW & Top 13% YW. Heavy at Weaning, and great growth in the Feedyard.

LOT 30	Ideal Eldorado 8A34	IBE SM
DOB: 02/28/18	SIRE LINE: Eldorado	# 62995
SIRE: Ideal 3596 of 9524 Lady		

IDEAL BEEF EVALUATIONSM

BW	WW	YW	ADG
83 lbs	608 lbs	1200 lbs	3.70 lbs
Ratio	99	106	
Selection		Indexes	
JVI-H		110	
JVI-C		111	

	EPD	% Rank
BW	1.7	41%
WW	51	25%
YW	93	23%
SC	0.51	25%
Milk	22	50%
IMF	0.06	87%
REA	0.26	51%

NOTES: A good performance bull with a BW EPD of 1.7, an individual BW of 83, and a JVI-H of 110.

DON'T MISS THIS PERFORMANCE HEIFER BULL.

LOT 29	Ideal Eldorado 8J67	IBE SM
DOB: 3/09/18	SIRE LINE: Eldorado	# 63191
SIRE: Ideal 3585 of 9524 Blckbrd		

IDEAL BEEF EVALUATIONSM

BW	WW	YW	ADG
95 lbs	667 lbs	1216 lbs	3.43 lbs
Ratio	109	107	
Selection		Indexes	
JVI-H		Not Recommended	
JVI-C		108	

	EPD	% Rank
BW	5.0	94%
WW	63	4%
YW	98	15%
SC	0.68	11%
Milk	17	79%
IMF	0.14	73%
REA	0.19	70%

NOTES: This bull will sire calves that are heavy at Weaning and perform in the Feedyard.

LOT 31	Ideal 8768 OF 5760 Lady	AAA
DOB: 02/22/18	SIRE LINE: Eldorado	# 19273907
SIRE: Ideal Encore of 9524 Lady		

IDEAL BEEF EVALUATIONSM

BW	WW	YW	ADG
98 lbs	512 lbs	1056 lbs	3.40 lbs
Ratio	91	95	
Selection		Indexes	
JVI-H		Not Recommended	
JVI-C		91	

	EPD	% Rank
BW	2.2	50%
WW	36	75%
YW	80	56%
SC	0.08	74%
Milk	28	15%
IMF	0.22	48%
REA	0.17	76%

NOTES: This Eldorado Line bull will add some Milk to his daughters and help control Mature Size.



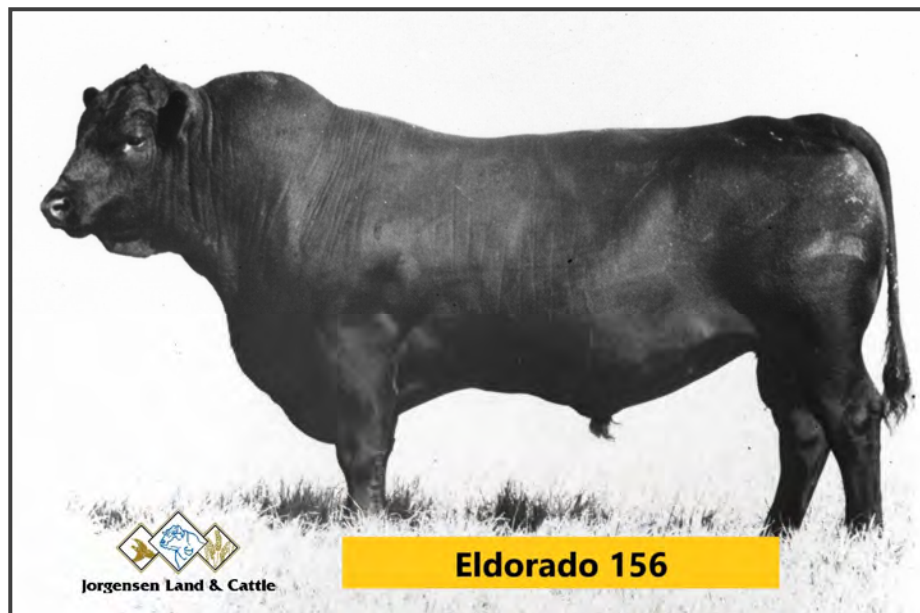
LOT 32	Ideal Eldorado 8A77	IBESM
DOB: 03/12/18	SIRE LINE: Eldorado	# 63060
SIRE: Ideal 3596 of 9524 Lady		

IDEAL BEEF EVALUATION™

BW	WW	YW	ADG
88 lbs	577 lbs	1152 lbs	3.60 lbs
Ratio	94	102	
Selection		Indexes	
JVI-H		Not Recommended	
JVI-C		95	

	EPD	% Rank
BW	0.9	26%
WW	34	80%
YW	62	88%
SC	0.57	19%
Milk	19	71%
IMF	0.01	93%
REA	0.38	21%

NOTES: Lot 32 is an Eldorado Line bull who should top-cross well on Rito or New Design Angus, or other breeds without increasing input costs.



Eldorado 156 of Ideal was a long spined, true performance sire that became known for growth and good daughters.

RITO SIRE LINE

SAV Renown 3439 is a powerful grandson of the Jorgensen foundation sire, RR Rito 707. "Rito 7075," the sire of Renown, was bred at "The Source" by combining the Rito 707 with the productive foundation Jorgensen female, Ideal 3407.

Renown traces 59 times to Rito 707; he has a total of 112 Jorgensen-bred or -owned ancestors in his foundation and thanks to linebreeding and A.I. these ancestors appear a total of 583 times throughout his pedigree.



LOT 33	Ideal 8196 of REN Blkbrd	AAA
DOB: 02/22/18	SIRE LINE: Rito	# 19287247
SIRE: S A V Renown 3439		

IDEAL BEEF EVALUATION™

BW	WW	YW	ADG
94 lbs	557 lbs	1154 lbs	3.73lbs
Ratio	100	100	
Selection		Indexes	
JVI-H		Not Recommended	
JVI-C		112	

	EPD	% Rank
BW	2.4	56%
WW	55	14%
YW	104	8%
SC	0.07	75%
Milk	20	64%
IMF	-0.01	94%
REA	0.46	11%

NOTES: A Rito Line, Performance Bull with a Top 8% YW EPD.



LOT 34	Ideal Rito 8356	IBESM
DOB: 03/23/18	SIRE LINE: Rito	# 63345
SIRE: Ideal 6122 of RES Blackcap		

IDEAL BEEF EVALUATIONSM

BW	WW	YW	ADG
108 lbs	698 lbs	1402 lbs	4.40 lbs
Ratio	118	125	
Selection		Indexes	
JVI-H		Not Recommended	
JVI-C		114	

	EPD	% Rank
BW	5.2	96%
WW	68	1%
YW	118	1%
SC	0.49	28%
Milk	21	59%
IMF	-0.02	95%
REA	0.58	4%

NOTES: You won't have trouble finding this bull. He posted a nearly 700 lb WW (118 ratio) and a YW of 1402 lbs (125 ratio). If you want to sell heavy calves at Weaning or Yearling, here is a bull for you.

LOT 35	Ideal Rito 8A98	IBESM
DOB: 03/11/18	SIRE LINE: Rito	# 63127
SIRE: Ideal 6121 of RES Irene		

IDEAL BEEF EVALUATIONSM

BW	WW	YW	ADG
89 lbs	677 lbs	1271 lbs	3.71 lbs
Ratio	111	112	
Selection		Indexes	
JVI-H		Not Recommended	
JVI-C		100	

	EPD	% Rank
BW	4.6	92%
WW	56	12%
YW	99	14%
SC	0.26	56%
Milk	27	18%
IMF	0.21	52%
REA	0.30	39%

NOTES: Another Rito Line bull that puts pounds on calves. He posted a WW ratio of 111 & a YW ratio of 112, and earned a YW EPD Top 14%.



LOT 36	Ideal Rito 8L61	IBESM
DOB: 04/09/18	SIRE LINE: Rito	# 63879
SIRE: Ideal 5154 of RES Belle		

IDEAL BEEF EVALUATIONSM

BW	WW	YW	ADG
80 lbs	683 lbs	1173 lbs	3.06 lbs
Ratio	105	103	
Selection		Indexes	
JVI-H		Not Recommended	
JVI-C		105	

	EPD	% Rank
BW	3.6	80%
WW	55	14%
YW	89	32%
SC	0.95	2%
Milk	19	72%
IMF	-0.02	95%
REA	0.49	9%

NOTES: Lot 36 is a bull that will add pounds to your calf crop at Weaning.

LOT 37	Ideal Rito 8A48	IBESM
DOB: 03/13/18	SIRE LINE: Rito	# 63068
SIRE: Ideal 6121 of RES Irene		

IDEAL BEEF EVALUATIONSM

BW	WW	YW	ADG
85 lbs	601 lbs	1073 lbs	2.95 lbs
Ratio	98	108	
Selection		Indexes	
JVI-H		95	
JVI-C		94	

	EPD	% Rank
BW	2.2	50%
WW	39	69%
YW	73	72%
SC	-0.31	98%
Milk	20	62%
IMF	0.28	31%
REA	0.47	11%

NOTES: Lot 37 is a bull that can add Muscle to calves, yet could be used on heifers and cows if you check your heifers often.



EMULOUS SIRE LINE

Ideal 1281 of 6469 Jilt was his name, but he was better known as "Bravo". He was a standout from the time he hit the ground and continued to draw attention up to and through the 2012 Bull Sale where he sold for \$59,000.

Today, he is best known for his broody, productive daughters who catch the eye of visitors to the pastures of Jorgensen Land & Cattle.

Semen available.



LOT 38	Ideal Emulous 8J89	IBESM
DOB: 03/16/18	SIRE LINE: Emulous	# 63167

SIRE: Ideal 5616 of 1281 Marjorie

IDEAL BEEF EVALUATION™

BW	WW	YW	ADG
102 lbs	662 lbs	1242 lbs	3.63 lbs
Ratio	108	125	
Selection		Indexes	
JVI-H		Not Recommended	
JVI-C		105	

	EPD	% Rank
BW	5.6	97%
WW	62	4%
YW	107	6%
SC	0.52	25%
Milk	15	91%
IMF	0.03	91%
REA	0.33	33%

NOTES: This bull carries Emulous Sire Line reputation for Growth. His calves will be heavy at Weaning and Yearling.



LOT 39	Ideal Emulous 8J92	IBESM
DOB: 03/26/18	SIRE LINE: Emulous	# 63009

SIRE: Ideal 5616 of 1281 Marjorie

IDEAL BEEF EVALUATION™

BW	WW	YW	ADG
102 lbs	675 lbs	1283 lbs	3.80 lbs
Ratio	110	113	
Selection		Indexes	
JVI-H		Not Recommended	
JVI-C		106	

	EPD	% Rank
BW	5.7	98%
WW	68	1%
YW	103	10%
SC	0.39	39%
Milk	18	74%
IMF	0.12	78%
REA	0.33	32%

NOTES: This bull, like his 1/2 brother (Lot 38), will sire a set of heavy calves. Whether you sell at Weaning or Yearling, these two bulls will create pounds for you to sell.

LOT 40	Ideal Emulous 8A71	IBESM
DOB: 03/14/18	SIRE LINE: Emulous	# 63033

SIRE: Ideal 6602 of 1281 Blackcap

IDEAL BEEF EVALUATION™

BW	WW	YW	ADG
87 lbs	707 lbs	1276 lbs	3.56
Ratio	115	113	
Selection		Indexes	
JVI-H		Not Recommended	
JVI-C		112	

	EPD	% Rank
BW	2.1	48%
WW	52	23%
YW	103	9%
SC	-0.12	90%
Milk	24	35%
IMF	0.23	46%
REA	0.31	36%

NOTES: Lot 40 scored one of the heaviest individual Weaning Weights of any bull in this sale; a 707 lb WW. Another Emulous Line bull that will sire heavy calves at Weaning & Yearling.



LOT 41	Ideal Emulous 8J98	IBESM
DOB: 03/13/18	SIRE LINE: Emulous	# 63125
SIRE: Ideal 1268 of 6469 Irene		

IDEAL BEEF EVALUATIONSM

BW	WW	YW	ADG
108 lbs	652 lbs	1295 lbs	4.02 lbs
Ratio	106	114	
Selection		Indexes	
JVI-H		Not Recommended	
JVI-C		97	

	EPD	% Rank
BW	5.6	97%
WW	63	4%
YW	95	19%
SC	0.31	49%
Milk	22	47%
IMF	-0.02	95%
REA	0.21	65%

NOTES: Top 4% WW EPD = Heavy Calves at Weaning!

LOT 42	Ideal Emulous 8A70	IBESM
DOB: 04/05/18	SIRE LINE: Emulous	# 63066
SIRE: Ideal 1268 of 6469 Irene		

IDEAL BEEF EVALUATIONSM

BW	WW	YW	ADG
87 lbs	574 lbs	1059 lbs	3.03 lbs
Ratio	94	107	
Selection		Indexes	
JVI-H		Not Recommended	
JVI-C		101	

	EPD	% Rank
BW	2.0	45%
WW	42	55%
YW	76	67%
SC	0.50	26%
Milk	23	43%
IMF	0.27	35%
REA	0.18	71%

NOTES: 1/2 brother to Lot 41.



LOT 43	Ideal Emulous 8J72	IBESM
DOB: 04/09/18	SIRE LINE: Emulous	# 63030
SIRE: Ideal 5601 of 1281 Blkbrd		

IDEAL BEEF EVALUATIONSM

BW	WW	YW	ADG
88 lbs	671 lbs	1168 lbs	3.11 lbs
Ratio	110	102	
Selection		Indexes	
JVI-H		Not Recommended	
JVI-C		101	

	EPD	% Rank
BW	2.8	65%
WW	45	47%
YW	89	32%
SC	0.10	73%
Milk	18	75%
IMF	0.24	43%
REA	0.19	69%

NOTES: Top 1/3 for YW EPD and had an individual 671 lb WW.

LOT 44	Ideal Emulous 8A54	IBESM
DOB: 02/26/18	SIRE LINE: Emulous	# 63088
SIRE: Ideal 6605 of 1281 Rose		

IDEAL BEEF EVALUATIONSM

BW	WW	YW	ADG
85 lbs	577 lbs	977 lbs	2.50 lbs
Ratio	94	99	
Selection		Indexes	
JVI-H		90	
JVI-C		90	

	EPD	% Rank
BW	2.4	54%
WW	40	63%
YW	55	92%
SC	-0.43	99%
Milk	20	62%
IMF	0.28	31%
REA	0.44	13%

NOTES: If you are set-up to check heifers regularly, this bull could be a used on heifers or cows. He had an individual BW of 85 and has a BW EPD of 2.4.



TRAVELER SIRE LINE

This is a "Bull Sale" but we wouldn't have great bulls without great cows. **Ideal 4465** (pictured below) was one of the most influential cows in the Jorgensen herd, and was sired by a Traveler Line bull — "Traveler 6807".

She was the dam of our first two Feed Efficiency sires and placed several sons in A.I. studs. **Ideal 4465** became known for her tremendous volume, capacity, and as "The Feed Efficiency Queen" of the Angus breed.

Her influence is widespread throughout the Angus breed.



LOT 45	Ideal 8439 of 4223 Blkbrd	AAA
DOB: 02/24/18	SIRE LINE: Traveler	# 19273781
SIRE: Ideal 4223 of 1168 Blkbrd		

IDEAL BEEF EVALUATION™

BW	WW	YW	ADG
88 lbs	628 lbs	1228 lbs	3.75 lbs
Ratio	110	108	

Selection	Indexes
JVI-H	Not Recommended
JVI-C	111

	EPD	% Rank
BW	0.0	15%
WW	47	38%
YW	84	45%
SC	-0.04	84%
Milk	20	67%
IMF	-0.13	98%
REA	0.41	17%

NOTES: Lot 45 earned an individual WW ratio of 110 and a YW ratio of 108. He posts a YW EPD rank of 45% and should sire plenty of red meat, given his REA EPD at Top 17%



LOT 46	Ideal Traveler 8V06	IBESM
DOB: 02/05/18	SIRE LINE: Traveler	# 62810
SIRE: Ideal 1168 of 9814 Lady		

IDEAL BEEF EVALUATION™

BW	WW	YW	ADG
90 lbs	648 lbs	1094 lbs	2.79 lbs
Ratio	109	112	
Selection		Indexes	
JVI-H	Not Recommended		
JVI-C	108		

	EPD	% Rank
BW	1.5	
WW	45	
YW	80	
SC	0.17	
Milk	22	
IMF	.25	
REA	0.40	

NOTES: One of the things Feedlot managers complain about is lack of uniformity in calves. Lots 46 & 47 are 1/2-brothers and using both of these bulls could certainly increase uniformity in a calf crop.

LOT 47	Ideal Traveler 8V07	IBESM
DOB: 03/17/18	SIRE LINE: Traveler	# 63004
SIRE: Ideal 1168 of 9814 Lady		

IDEAL BEEF EVALUATION™

BW	WW	YW	ADG
90 lbs	605 lbs	1019 lbs	2.59
Ratio	102	104	

Selection	Indexes
JVI-H	Not Recommended
JVI-C	104

	EPD	% Rank
BW	1.2	
WW	40	
YW	72	
SC	0.06	
Milk	20	
IMF	0.27	
REA	0.42	

NOTES: 1/2-brother to Lot 47; they would make a good pair of bulls to put on a cow herd.



LOT 48	Ideal Traveler 8A87	IBE SM
DOB: 03/17/17	SIRE LINE: Traveler	# 63004
SIRE: Ideal 4398 of 8345 Blackcap		

IDEAL BEEF EVALUATIONSM

BW	WW	YW	ADG
89 lbs	647 lbs	1256 lbs	3.80 lbs
Ratio	106	111	
Selection		Indexes	
JVI-H		Not Recommended	
JVI-C		102	

	EPD	% Rank
BW	3.6	80%
WW	52	23%
YW	89	33%
SC	0.45	32%
Milk	16	84%
IMF	0.03	91%
REA	0.34	29%

NOTES: The first of another set of 1/2-brother bulls. Top 23% WW and Top 33% YW EPD bull. Those numbers make for heavy calves at Weaning or Yearling.

LOT 49	Ideal Traveler 8J27	IBE SM
DOB: 03/02/18	SIRE LINE: TRAVELER	# 63062
SIRE: Ideal 4398 of 8345 Blackcap		

IDEAL BEEF EVALUATIONSM

BW	WW	YW	ADG
93 lbs	609 lbs	1078 lbs	2.93 lbs
Ratio	99	95	
Selection		Indexes	
JVI-H		Not Recommended	
JVI-C		101	

	EPD	% Rank
BW	3.8	83%
WW	51	25%
YW	86	40%
SC	-0.33	98%
Milk	12	97%
IMF	0.13	75%
REA	0.47	10%

NOTES: Top 25% WW & Top 40 % YW EPD.
1/2-brother to Lot 48.



LOT 50	Ideal Traveler 8M29	IBE SM
DOB: 04/07/18	SIRE LINE: Traveler	# 63841
SIRE: Ideal 2851 of Uncon Blkbrd		

IDEAL BEEF EVALUATIONSM

BW	WW	YW	ADG
88 lbs	587 lbs	1245 lbs	4.11 lbs
Ratio	90	109	
Selection		Indexes	
JVI-H		Not Recommended	
JVI-C		98	

	EPD	% Rank
BW	2.3	52%
WW	35	79%
YW	70	77%
SC	0.82	5%
Milk	15	90%
IMF	0.29	28%
REA	0.37	23%

NOTES: A good YW ratio bull (109 YW ratio) who gained 4.11 lbs per day to Yearling.

LOT 51	Ideal Traveler 8M72	IBE SM
DOB: 04/16/18	SIRE LINE: Traveler	# 63951
SIRE: Bar 9 Guru		

IDEAL BEEF EVALUATIONSM

BW	WW	YW	ADG
91 lbs	648 lbs	1141 lbs	3.08
Ratio	100	100	
Selection		Indexes	
JVI-H		Not Recommended	
JVI-C		91	

	EPD	% Rank
BW	2.3	52%
WW	36	76%
YW	75	69%
SC	0.14	68%
Milk	24	35%
IMF	0.22	49%
REA	0.10	88%

NOTES:



EMULATION SIRE LINE

Over the years, the Emulation Line bulls have worked well in combination with traditional Jorgensen-bred cows. One prime example is **Ideal 3020** (pictured below), the dam of **Ideal Encore**, the heaviest YW sire ever produced at Jorgensen Land & Cattle



LOT 52	Ideal 8526 of 4U2 Jilt	AAA
DOB: 02/22/18	SIRE LINE: Emulation	# 19314095

SIRE: Sinclair Exactly 4U2

IDEAL BEEF EVALUATION™

BW	WW	YW	ADG
80 lbs	628 lbs	935 lbs	1.92 lbs
Ratio	111	84	
Selection		Indexes	
JVI-H		110	
JVI-C		107	

	EPD	% Rank
BW	0.8	24%
WW	47	37%
YW	66	83%
SC	0.61	16%
Milk	20	64%
IMF	0.25	40%
REA	0.08	89%

NOTES: A Heifer bull that should make good daughters.



LOT 53	Ideal Emulation 8R90	IBESM
DOB: 03/18/18	SIRE LINE: Emulation	# 63514
SIRE: X-changer 4V17		

IDEAL BEEF EVALUATION™

BW	WW	YW	ADG
82 lbs	600 lbs	1091 lbs	3.07bs
Ratio	102	100	
Selection		Indexes	
JVI-H		108	
JVI-C		101	

NOTES: A solid Heifer bull.

	EPD	% Rank
BW	-0.5	11%
WW	24	91%
YW	62	88%
SC	0.19	64%
Milk	12	97%
IMF	0.40	9%
REA	0.07	90%

LOT 54	Ideal Emulation 8S39	IBESM
DOB: 03/20/18	SIRE LINE: Emulation	# 63584

SIRE: Sinclair Piney Creek 6FV16

IDEAL BEEF EVALUATION™

BW	WW	YW	ADG
87 lbs	616 lbs	1185 lbs	3.55
Ratio	105	108	
Selection		Indexes	
JVI-H		Not Recommended	
JVI-C		102	

NOTES: A bull to look at, especially if you are in an area where too much Milk can be a problem with cows breeding back. The Emulation Line is known for improving udder structure and longevity.

	EPD	% Rank
BW	1.7	40%
WW	38	70%
YW	74	71%
SC	0.30	51%
Milk	10	98%
IMF	0.18	60%
REA	0.32	35%



RITO SIRE LINE

Here is one example of a Rito bred cow. Note the volume & capacity in her; they are grazing machines that convert grass to beef!



LOT 55	Ideal Rito 8L22	IBESM
DOB: 04/06/18	SIRE LINE: Rito	# 63820

SIRE: Ideal 5154 of RES Belle

IDEAL BEEF EVALUATION™

BW	WW	YW	ADG
75 lbs	633 lbs	1111 lbs	2.99 lbs
Ratio	97	98	
Selection		Indexes	
JVI-H		113	
JVI-C		112	

	EPD	% Rank
BW	1.1	29%
WW	40	65%
YW	90	30%
SC	0.53	23%
Milk	17	80%
IMF	0.19	57%
REA	0.53	7%

NOTES: A Rito Line Heifer bull with Top 30% YW EPD.



LOT 56	Ideal Rito 8A15	IBESM
DOB: 03/13/18	SIRE LINE: Rito	# 63025

SIRE: Ideal 4137 of Res Blkbrd

IDEAL BEEF EVALUATION™

BW	WW	YW	ADG
80 lbs	568 lbs	1106 lbs	3.36bs
Ratio	96	99	
Selection		Indexes	
JVI-H		91	
JVI-C		88	

NOTES: A Rito Line Heifer bull.

	EPD	% Rank
BW	1.6	38%
WW	26	90%
YW	74	69%
SC	0.55	21%
Milk	13	95%
IMF	-0.07	97%
REA	0.28	43%

LOT 57	Ideal Emulation 8J86	IBESM
DOB: 03/01/18	SIRE LINE: Rito	# 63043

SIRE: Ideal 6121 of RES Irene

IDEAL BEEF EVALUATION™

BW	WW	YW	ADG
102 lbs	670 lbs	1236 lbs	3.54
Ratio	109	109	
Selection		Indexes	
JVI-H		Not Recommended	
JVI-C		106	

NOTES: A really good Rito Line bull for use on Cows. He will put some weight on calves & will transmit capacity to his daughters.

	EPD	% Rank
BW	4.3	89%
WW	56	11%
YW	95	19%
SC	0.55	21%
Milk	18	74%
IMF	0.13	75%
REA	0.48	10%



LOT 58	Ideal Rito 8M42	IBESM
DOB: 04/15/18	SIRE LINE: Rito	# 63858
SIRE: Ideal 5154 of RES Belle		

IDEAL BEEF EVALUATIONSM

BW	WW	YW	ADG
89 lbs	682 lbs	1017 lbs	2.10 lbs
Ratio	105	89	
Selection		Indexes	
JVI-H		Not Recommended	
JVI-C		99	

	EPD	% Rank
BW	4.0	87%
WW	55	15%
YW	92	25%
SC	0.48	28%
Milk	18	73%
IMF	-0.21	99%
REA	0.54	6%

NOTES: A Rito Line red-meat making bull.

Top 25% for YW EPD and Top 6% for REA

LOT 59	Ideal Rito 8L41	IBESM
DOB: 03/30/18	SIRE LINE: Rito	# 63891
SIRE: Ideal 5154 of RES Belle		

IDEAL BEEF EVALUATIONSM

BW	WW	YW	ADG
78 lbs	666 lbs	1090 lbs	2.65 lbs
Ratio	103	96	
Selection		Indexes	
JVI-H		Not Recommended	
JVI-C		109	

	EPD	% Rank
BW	3.5	79%
WW	54	17%
YW	92	26%
SC	0.86	4%
Milk	14	93%
IMF	0.02	92%
REA	0.47	11%

NOTES: A 1/2-brother to Lot 58. Both of these bulls are ranked Top 25% or better for YW, which means their calves will put on pounds!



LOT 60	Ideal Rito 7C16	IBESM
DOB: 09/12/17	SIRE LINE: Rito	# 62632
SIRE: Ideal 5156 of RES Marjorie		

IDEAL BEEF EVALUATIONSM

BW	WW	YW	ADG
87 lbs	639 lbs	1095 lbs	2.85 lbs
Ratio	111	98	
Selection		Indexes	
JVI-H		Not Recommended	
JVI-C		104	

	EPD	% Rank
BW	2.6	60%
WW	52	21%
YW	77	64%
SC	0.74	8%
Milk	29	9%
IMF	0.19	56%
REA	0.52	7%

NOTES: This Lot 60 bull is a bull to look at for Pounds-of-Calf-Weaned and for making Replacement Females for your herd.



Jorgensen Land & Cattle

6 YEARS AND COUNTING

For the sixth consecutive year, Jorgensen Land & Cattle was named the nation's largest supplier of beef bulls according to BEEF Magazine & the 2020 BEEF Seedstock 100 List.

Jorgensen Land & Cattle earned their reputation as "The Source" for foundation genetics – the kind of genetics that you use to build a cow herd. We earned that reputation by consistently selecting our breeding stock based on – in this order – reproduction ability, fast growth, and a desirable carcass. Those three factors have been foremost in our breeding & selection criteria throughout our past 60+ years. Consistent testing, systematic selection, and discipline, generation after generation, has built our foundation breeding program. That breeding program creates bulls that produce uniformity in a calf crop for our customers.

As you examine our catalog, be sure to notice the generations of consistent performance that have been stacked on top of each other.

We earned the title of "Largest" by doing the right things and doing them consistently – for generations.

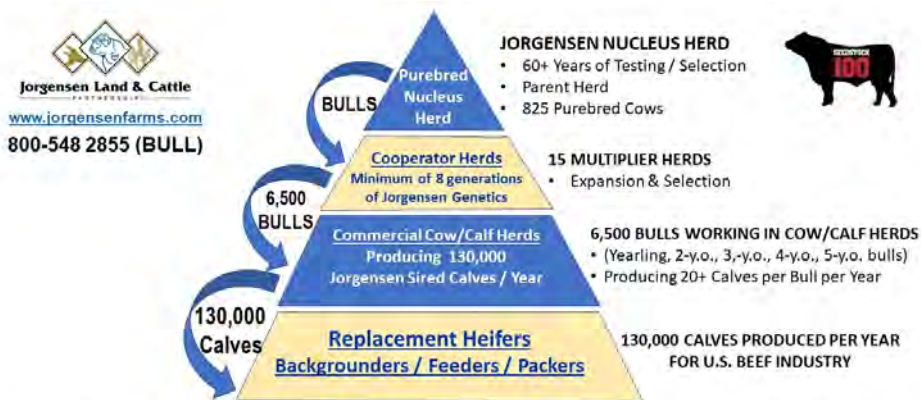







EMULOUS SIRE LINE

Daughters of Ideal 1281 tell the Emulous Story very well. Take a look at these photos.



Each year, Jorgensen bulls sire roughly 130,000 calves across the U.S., calves that build beef cow herds and calves that produce healthy, delicious steaks, roasts, and burgers. That level of influence is something we take seriously, and that is why we never stop searching for ways to improve our genetics and their positive impacts on your cattle operation and the U.S. Beef Industry.

LOT 61	Ideal Emulous 8J15	IBE SM
DOB: 03/16/18	SIRE LINE: Emulous	# 63110
SIRE: Ideal Ideal 3270 of 1281 Jilt		

IDEAL BEEF EVALUATIONSM

BW	WW	YW	ADG
89 lbs	648 lbs	1235 lbs	3.67 lbs
Ratio	106	109	
Selection		Indexes	
JVI-H		Not Recommended	
JVI-C		104	

NOTES: A good, performance sire that can help build a productive cow herd if you retain heifers.

	EPD	% Rank
BW	5.4	97%
WW	62	5%
YW	104	9%
SC	0.44	33%
Milk	26	23%
IMF	0.31	24%
REA	0.23	58%

LOT 62	Ideal Emulous 8N32	IBE SM
DOB: 03/13/18	SIRE LINE: Emulous	# 65613
SIRE: Ideal Ideal 5618 of 1281 Marjorie		

IDEAL BEEF EVALUATIONSM

BW	WW	YW	ADG
91 lbs	537 lbs	1075 lbs	3.36 lbs
Ratio	91	95	
Selection		Indexes	
JVI-H		Not Recommended	
JVI-C		109	

NOTES: A bull that will sire pounds at Weaning & Yearling.

	EPD	% Rank
BW	3.7	82%
WW	56	12%
YW	97	16%
SC	0.02	79%
Milk	17	80%
IMF	0.21	50%
REA	0.28	43%

LOT 63	Ideal Emulous 8A68	IBESM
DOB: 03/07/18	SIRE LINE: Emulous	# 63112
SIRE: Ideal 3270 of 1281 Jilt		

IDEAL BEEF EVALUATIONSM

BW	WW	YW	ADG
87 lbs	681 lbs	1219 lbs	3.36 lbs
Ratio	111	108	
Selection		Indexes	
JVI-H		Not Recommended	
JVI-C		114	

	EPD	% Rank
BW	2.7	62%
WW	54	16%
YW	93	23%
SC	0.23	58%
Milk	21	48%
IMF	0.48	4%
REA	0.15	78%

NOTES: If you retain ownership or you sell your calves to Feedyards that try for CAB premiums, here is a bull that will generate heavy calves which will also Grade well. Top 4% IMF EPD

LOT 64	Ideal Emulous 8J94	IBESM
DOB: 03/08/18	SIRE LINE: Emulous	# 63150
SIRE: Ideal 5616 of 1281 Marjorie		

IDEAL BEEF EVALUATIONSM

BW	WW	YW	ADG
102 lbs	549 lbs	1073 lbs	3.28 lbs
Ratio	90	95	
Selection		Indexes	
JVI-H		Not Recommended	
JVI-C		93	

	EPD	% Rank
BW	5.0	94%
WW	42	57%
YW	78	61%
SC	0.65	13%
Milk	8	99%
IMF	0.28	30%
REA	0.27	48%

NOTES: Top 1/3 for IMF EPD. His calves should grade well.



LOT 65	Ideal Emulous 8N58	IBESM
DOB: 04/09/18	SIRE LINE: Emulous	# 65601
SIRE: Ideal 3254 of 281 Blackcap		

IDEAL BEEF EVALUATIONSM

BW	WW	YW	ADG
94 lbs	582 lbs	1126 lbs	3.40 lbs
Ratio	99	99	
Selection		Indexes	
JVI-H		Not Recommended	
JVI-C		90	

	EPD	% Rank
BW	3.8	83%
WW	42	56%
YW	76	66%
SC	0.53	24%
Milk	19	71%
IMF	0.14	72%
REA	0.21	65%

NOTES: A balanced bull.

LOT 66	Ideal Emulous 8J57	IBESM
DOB: 04/12/18	SIRE LINE: Emulous	# 63183
SIRE: Ideal 3270 of 1281 Jilt		

IDEAL BEEF EVALUATIONSM

BW	WW	YW	ADG
95 lbs	662 lbs	1157 lbs	3.10 lbs
Ratio	108	102	
Selection		Indexes	
JVI-H		Not Recommended	
JVI-C		81	

	EPD	% Rank
BW	5.4	96%
WW	46	41%
YW	73	72%
SC	0.23	59%
Milk	20	64%
IMF	0.10	82%
REA	0.16	78%

NOTES: Impressive WW ratio of 108 and a WW EPD that ranks Top 41%.



TRAVELER SIRE LINE

Here are a key few members of the Traveler Sire Line.



LOT 67	Ideal Traveler 8F80	IBESM
DOB: 03/31/18	SIRE LINE: Traveler	# 65333
SIRE: Ideal 6236 of 1168 Jilt		

IDEAL BEEF EVALUATION™

BW	WW	YW	ADG
82 lbs	555 lbs	1117 lbs	3.51 lbs
Ratio	96	100	
Selection		Indexes	
JVI-H		104	
JVI-C		101	

	EPD	% Rank
BW	0.9	26%
WW	38	69%
YW	71	76%
SC	0.23	59%
Milk	28	15%
IMF	0.31	24%
REA	0.37	22%

NOTES: **Heifer Bull**. Low BW EPD, but still gained just over 3.5 lb per day to Yearling, and he is in the Top 25% for IMF & REA



LOT 68	Ideal Traveler 8R84	IBESM
DOB: 03/31/18	SIRE LINE: Traveler	# 63492
SIRE: Ideal 5327 of 0116 Marjorie		

IDEAL BEEF EVALUATION™

BW	WW	YW	ADG
82 lbs	630 lbs	1135 lbs	3.15 lbs
Ratio	107	103	
Selection		Indexes	
JVI-H		103	
JVI-C		100	

NOTES: **Heifer Bull**. JVI-H score of 103

	EPD	% Rank
BW	0.9	26%
WW	37	73%
YW	68	81%
SC	0.14	69%
Milk	18	78%
IMF	0.17	62%
REA	0.18	72%

LOT 69	Ideal Traveler 8E20	IBESM
DOB: 02/26/18	SIRE LINE: Traveler	# 63748
SIRE: Ideal 1168 of 9814 Lady		

IDEAL BEEF EVALUATION™

BW	WW	YW	ADG
75 lbs	574 lbs	1083 lbs	3.18
Ratio	91	85	
Selection		Indexes	
JVI-H		122	
JVI-C		113	

NOTES: **Heifer Bull with a JVI-H score of 122**.

How often do you see a heifer bull with a BW EPD & a REA EPD — both in the Top 4%. Here's a heifer bull that puts some muscle in his calves.

	EPD	% Rank
BW	-1.7	4%
WW	36	77%
YW	60	89%
SC	0.36	44%
Milk	21	55%
IMF	0.25	39%
REA	0.54	5%





LOT 71	Ideal 8235 of 5462 Blackcap	AAA
DOB: 02/27/18	SIRE LINE: TRAVELER	# 19274177

SIRE: Ideal 5462 of 3751 Betty

IDEAL BEEF EVALUATIONSM

BW	WW	YW	ADG
96 lbs	644 lbs	1230 lbs	3.66 lbs
Ratio	114	111	
Selection		Indexes	
JVI-H		Not Recommended	
JVI-C		103	

	EPD	% Rank
BW	5.5	97%
WW	64	3%
YW	111	4%
SC	0.64	13%
Milk	33	3%
IMF	0.19	58%
REA	0.32	35%

NOTES: This is a heck of a Performance bull to be hidden this far back in a catalog. He will pack pounds on a calf crop!



LOT 72	Ideal Traveler 8J02	IBE SM
DOB: 03/17/18	SIRE LINE: Traveler	# 63000

SIRE: Ideal 4398 of 8345 Blackcap

IDEAL BEEF EVALUATIONSM

BW	WW	YW	ADG
89 lbs	671 lbs	1131 lbs	2.88 lbs
Ratio	110	100	
Selection		Indexes	
JVI-H		Not Recommended	
JVI-C		109	

NOTES: Top 10% YW EPD means a heavy calf crop when you sell them. 109 JVI-C score

	EPD	% Rank
BW	3.1	72%
WW	55	15%
YW	103	10%
SC	0.51	26%
Milk	18	75%
IMF	0.00	94%
REA	0.36	24%

LOT 73	Ideal Traveler 8Z78	IBE SM
DOB: 0/23/18	SIRE LINE: Traveler	# 65053

SIRE: Ideal 2373 of 7773 Blackcap

IDEAL BEEF EVALUATIONSM

BW	WW	YW	ADG
90 lbs	585 lbs	1219 lbs	3.97
Ratio	104	105	
Selection		Indexes	
JVI-H		Not Recommended	
JVI-C		109	

NOTES: This bull gained almost 4 lbs per day and that's reflected in his 105 YW ratio and a YW EPD in the Top 13%. Performance. JVI-C score of 109.

	EPD	% Rank
BW	3.6	80%
WW	55	15%
YW	100	13%
SC	0.72	9%
Milk	25	30%
IMF	0.21	51%
REA	0.29	41%



LOT 74	Ideal 8465 of 5421 Keepsake	AAA
DOB: 03/09/18	SIRE LINE: Traveler	# 19274156
SIRE: Ideal 5421 of 3317 Blkbrd		

IDEAL BEEF EVALUATIONSM

BW	WW	YW	ADG
90 lbs	579 lbs	1073 lbs	3.09 lbs
Ratio	103	97	
Selection		Indexes	
JVI-H		Not Recommended	
JVI-C		108	

	EPD	% Rank
BW	1.7	41%
WW	48	36%
YW	92	25%
SC	0.50	27%
Milk	30	8%
IMF	0.11	80%
REA	0.45	13%

NOTES: Top 25% YW EPD, Top 13% REA EPD, and a JVI-C score of 108. Will sire calves that weigh on Sale Day.

LOT 76	Ideal Traveler 8W59	IBES SM
DOB: 04/19/18	SIRE LINE: Traveler	# 64066
SIRE: Ideal Traveler IR84		

IDEAL BEEF EVALUATIONSM

BW	WW	YW	ADG
99 lbs	673 lbs	1228 lbs	3.47 lbs
Ratio	113	108	
Selection		Indexes	
JVI-H		Not Recommended	
JVI-C		95	

	EPD	% Rank
BW	3.2	73%
WW	43	55%
YW	77	62%
SC	0.49	27%
Milk	19	73%
IMF	0.19	57%
REA	0.13	82%

NOTES: A good gaining bull.

LOT 75	Ideal Traveler 8W63	IBES SM
DOB: 04/14/18	SIRE LINE: TRAVELER	# 64057
SIRE: Ideal Traveler 43		

IDEAL BEEF EVALUATIONSM

BW	WW	YW	ADG
102 lbs	611 lbs	1158 lbs	3.42 lbs
Ratio	103	102	
Selection		Indexes	
JVI-H		Not Recommended	
JVI-C		95	

	EPD	% Rank
BW	4.0	86%
WW	48	36%
YW	92	26%
SC	0.22	60%
Milk	22	53%
IMF	0.10	81%
REA	0.15	79%

NOTES: Top 26% YW EPD.

LOT 77	Ideal Traveler 8A90	IBES SM
DOB: 04/01/18	SIRE LINE: Traveler	# 63169
SIRE: Ideal 4396 of 8345 Lady		

IDEAL BEEF EVALUATIONSM

BW	WW	YW	ADG
89 lbs	654 lbs	1257 lbs	3.77
Ratio	107	111	
Selection		Indexes	
JVI-H		Not Recommended	
JVI-C		97	

	EPD	% Rank
BW	3.7	82%
WW	47	40%
YW	75	67%
SC	0.48	29%
Milk	14	92%
IMF	0.20	53%
REA	0.22	60%

NOTES: Another good gaining bull with a 97 JVI-C





LOT 78	Ideal Traveler 8N33	IBESM
DOB: 03/13/18	SIRE LINE: TRAVELER	# 66505
SIRE: Ideal 0764 of 7773 Jilt		

IDEAL BEEF EVALUATIONSM

BW	WW	YW	ADG
91 lbs	705 lbs	1263 lbs	3.49 lbs
Ratio	120	112	
Selection		Indexes	
JVI-H		Not Recommended	
JVI-C		95	

NOTES: Impressive individual ratios and Top 7% EPD for Ribeye.

	EPD	% Rank
BW	3.5	78%
WW	45	45%
YW	75	67%
SC	0.16	67%
Milk	23	43%
IMF	0.24	42%
REA	0.52	7%



LOT 79	Ideal Traveler 8J50	IBESM
DOB: 03/12/18	SIRE LINE: Traveler	# 65054
SIRE: Ideal 1779 of 7773 Irene		

IDEAL BEEF EVALUATIONSM

BW	WW	YW	ADG
95 lbs	698 lbs	1264 lbs	3.54 lbs
Ratio	114	112	
Selection		Indexes	
JVI-H		Not Recommended	
JVI-C		102	

NOTES: Good individual ratios on this bull, good ADG; genetics for muscling. JVI-C of 102.

	EPD	% Rank
BW	1.6	38%
WW	43	53%
YW	74	69%
SC	0.42	36%
Milk	23	46%
IMF	0.23	45%
REA	0.42	16%



Friends, Family, Cattle & Hunting

DAKOTA TERRITORY BULLS

When utilizing multi-sire groups with cows, we can't always establish a certain sire for a small percentage of bulls. We can measure the performance at multiple stages of the development process and weed-out any animals that don't deserve to become "Sires".

Dakota Territory bulls still go through the same development program as our other bulls. We can build EPDs from their performance data versus contemporary bulls. Their performance data is entered into and analyzed within the **IBESM** genetic evaluation process to project their genetic merit via **IBESM** EPDs.

And, Dakota Territory bulls are protected by the same rigorous herd health program and must pass the same health screenings, and pass multiple Breeding Soundness Exams along their path to becoming **SMARTBULLS™**.

You will find some good commercial bulls under the banner of Dakota Territory bulls.

LOT 80	Ideal Dakota Territory 8G53	IBE SM
DOB: 04/10/18	Dakota Territory	# 65342

IDEAL BEEF EVALUATIONSM

BW	WW	YW	ADG
86 lbs	684 lbs	1256 lbs	3.57 lbs
Ratio	118	112	
Selection		Indexes	
JVI-H		Not Recommended	
JVI-C		109	

NOTES: This is a good Performance bull. His calves will carry some pounds when they go to market.

	EPD	% Rank
BW	4.0	87%
WW	54	16%
YW	105	7%
SC	0.55	21%
Milk	23	44%
IMF	0.22	47%
REA	0.35	26%



LOT 81	Ideal Dakota Territory 8M92	IBE SM
DOB: 04/17/18	Dakota Territory	# 63920

IDEAL BEEF EVALUATIONSM

BW	WW	YW	ADG
93 lbs	778 lbs	1215 lbs	2.74 lbs
Ratio	120	107	
Selection		Indexes	
JVI-H		Not Recommended	
JVI-C		97	

NOTES: Top 10% YW EPD means a heavy calf crop when you sell them.

	EPD	% Rank
BW	6.3	99%
WW	62	4%
YW	103	9%
SC	0.44	33%
Milk	21	59%
IMF	0.02	93%
REA	0.18	73%



LOT 82	Ideal Dakota Territory 8R35	IBE SM
DOB: 02/21/18	Dakota Territory	# 63478

IDEAL BEEF EVALUATIONSM

BW	WW	YW	ADG
76 lbs	555 lbs	1303 lbs	4.68 lbs
Ratio	95	119	
Selection		Indexes	
JVI-H		118	
JVI-C		112	

	EPD	% Rank
BW	-0.6	10%
WW	33	82%
YW	85	42%
SC	0.56	20%
Milk	16	85%
IMF	0.13	75%
REA	0.13	83%

NOTES: This is a great bull to start-off a group of Heifer Bulls. Top 10% BW EPD on a bull that gained an IMPRESSIVE 4.68 lbs / day & earned a 119 YW ratio.

LOT 83	Ideal Dakota Territory 8S15	IBE SM
DOB: 03/12/18	Dakota Territory	# 63534

IDEAL BEEF EVALUATIONSM

BW	WW	YW	ADG
85 lbs	534 lbs	1108 lbs	3.59 lbs
Ratio	91	101	
Selection		Indexes	
JVI-H		94	
JVI-C		94	

	EPD	% Rank
BW	2.4	55%
WW	32	85%
YW	77	64%
SC	0.07	75%
Milk	13	95%
IMF	0.33	19%
REA	0.21	63%

NOTES: This bull could be used with heifers as long as you check your heifers regularly.



LOT 84	Ideal Dakota Territory 8K41	IBE SM
DOB: 04/04/18	Dakota Territory	# 64716

IDEAL BEEF EVALUATIONSM

BW	WW	YW	ADG
80 lbs	459 lbs	1050 lbs	3.69 lbs
Ratio	84	94	
Selection		Indexes	
JVI-H		92	
JVI-C		91	

	EPD	% Rank
BW	2.2	51%
WW	29	88%
YW	73	71%
SC	0.84	4%
Milk	22	49%
IMF	0.36	15%
REA	0.10	87%

NOTES: Heifer Bull. His calves will grade.

LOT 85	Ideal Dakota Territory 8R47	IBE SM
DOB: 04/15/18	Dakota Territory	# 63630

IDEAL BEEF EVALUATIONSM

BW	WW	YW	ADG
78 lbs	632 lbs	1111 lbs	3.00
Ratio	108	101	
Selection		Indexes	
JVI-H		110	
JVI-C		106	

	EPD	% Rank
BW	0.4	19%
WW	40	63%
YW	73	71%
SC	0.07	75%
Milk	22	51%
IMF	0.33	20%
REA	0.14	80%

NOTES: Heifer Bull.

Low individual BW and Low BW EPD (Top 19%).





The Jorgensen family has always strived to find better ways to do things, whether creating better beef cattle genetics, crops or soil conservation practices, and that heritage of innovation led us to work with Zoetis to create the **IDEAL BEEF EVALUATION™**.

This proprietary genetic evaluation is the product of a partnership between Zoetis and Jorgensen Land & Cattle. This joint project combines the tremendous performance testing data set & DNA bank of Jorgensen Land & Cattle with the genetics, analytical, and R&D teams of Zoetis, along with their gold standard HD50K genomic test.

The Ideal Beef Evaluation is backed by over 150,000 phenotypic performance observations from both Registered & Commercial Angus herds and more than 10,000 HD50K genomic tested animals. The combination of performance and genotypic data from these herds creates greater selection accuracy for our herd and our customers.

How Does the **IDEAL BEEF EVALUATION™** Benefit Cattlemen

We always strive to match the right bull with the needs of each bull customer and the Ideal Beef Evaluation gives us a better understanding of the genetic makeup of each of our bulls, and that allows our commercial customers to make more informed bull buying and leasing decisions to help them reach their goals.

Genetic Predictions

Our initial launch of the Ideal Beef Evaluation (2019) produced genomic-enhanced EPDs for **BW, WW, YW, SC, Milk, IMF, REA, and FAT**. In addition, we incorporated those data into two easy-to-use Selection Indexes: a **Jorgensen Versatility Index (JVI)** for bulls to be used on Heifers (**JVI-H**) and for bulls to be used on Cows (**JVI-C**).

Current Traits & Indexes

- Birth Weight (**BW**) • Intramuscular Fat (**IMF**)
- Weaning Weight (**WW**) • Ribeye Area (**REA**)
- Yearling Weight (**YW**) • Rib Fat (**FAT**)
- Scrotal Circumference (**SC**) • Rump Fat (**RFAT**)
- Milk (**Milk**) • Yearling Breeding Soundness (**YBS**)
- Jorgensen Versatility Index – Heifers (**JVI-H**)
- Jorgensen Versatility Index – Cows (**JVI-C**)

Better Doesn't Need to Be More Complicated

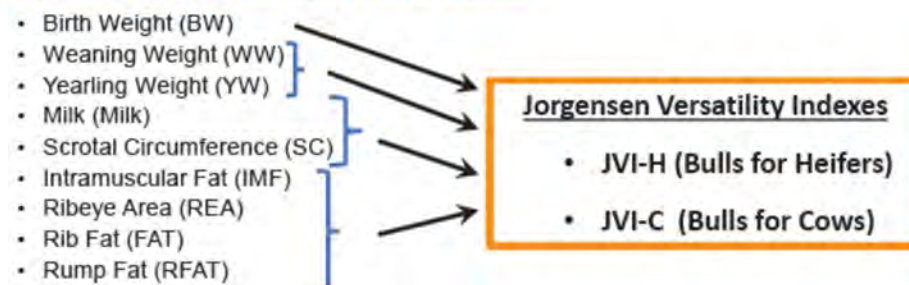
How many numbers do bull buyers really want to juggle when selecting bulls? Bull selection can be as complicated as you want ... but it doesn't have to be. Our new JVI-H and JVI-C allow you to simultaneously select for more than one trait without feeling like you are trying to do algebra.

Announcing Jorgensen Versatility Indexes • JVI-H and JVI-C

Jorgensen Versatility Indexes (**JVI**) are Selection Indexes that were created to help commercial cattlemen take advantage of the power of the Ideal Beef Evaluation without having to juggle multiple numbers. Selection Indexes are tools that help cattlemen select for multiple traits by combining those traits into one single number. Our partnership with Zoetis produced the **JVI-H**, which incorporates multiple traits and weights them with priorities that favor bulls more suitable for use on Heifers. The **JVI-C** places less emphasis on Birth Weight and allows more selection for Growth and Carcass traits.

◆ Higher Index Scores indicate better overall genetic merit.

GE-EPDs Incorporated in the JVI-H and JVI-C





LOT 88	Ideal Dakota Territory 8Q05	IBE SM
DOB: 02/01/18	Dakota Territory	# 62965

IDEAL BEEF EVALUATIONSM

BW	WW	YW	ADG
69 lbs	581 lbs	1111 lbs	3.31 lbs
Ratio	95	98	
Selection		Indexes	
JVI-H		115	
JVI-C		99	

NOTES: Heifer Bull

	EPD	% Rank
BW	-3.2	1%
WW	15	94%
YW	59	90%
SC	0.22	60%
Milk	20	66%
IMF	0.05	89%
REA	0.24	57%

LOT 89	Ideal Dakota Territory 8R40	IBE SM
DOB: 04/11/18	Dakota Territory	# 63531

IDEAL BEEF EVALUATIONSM

BW	WW	YW	ADG
77 lbs	588 lbs	950 lbs	2.27 lbs
Ratio	100	87	
Selection		Indexes	
JVI-H		97	
JVI-C		93	

NOTES: Heifer Bull.

	EPD	% Rank
BW	0.8	25%
WW	32	84%
YW	59	90%
SC	0.51	25%
Milk	22	51%
IMF	0.19	56%
REA	0.19	68%



LOT 90	Ideal Dakota Territory 8Q18	IBE SM
DOB: 02/02/18	Dakota Territory	# 62990

LOT 92	Ideal Dakota Territory 8T39	IBE SM
DOB: 03/21/18	Dakota Territory	# 65643

IDEAL BEEF EVALUATIONSM

BW	WW	YW	ADG
71 lbs	556 lbs	1042 lbs	3.04 lbs
Ratio	91	105	
Selection		Indexes	
JVI-H		106	
JVI-C		94	

	EPD	% Rank
BW	-1.7	4%
WW	20	93%
YW	52	93%
SC	-0.04	83%
Milk	23	46%
IMF	0.25	41%
REA	0.26	50%

NOTES: Heifer Bull**IDEAL BEEF EVALUATIONSM**

BW	WW	YW	ADG
85 lbs	540 lbs	1078 lbs	3.36 lbs
Ratio	100	100	
Selection		Indexes	
JVI-H		111	
JVI-C		110	

	EPD	% Rank
BW	1.3	32%
WW	40	63%
YW	98	15%
SC	35	45%
Milk	22	49%
IMF	0.25	40%
REA	0.30	39%

NOTES: If you check your heifers regularly, check him out as a possible Heifer Bull.

A lot of Performance in this bull. Top 15% YW EPD.



The Pattern for Our Cow Herd

LOT 93	Ideal Dakota Territory 8V95	IBE SM
DOB: 03/20/18	Dakota Territory	# 65380

IDEAL BEEF EVALUATIONSM

BW	WW	YW	ADG
93 lbs	654 lbs	1276 lbs	3.89 lbs
Ratio	113	114	

Selection	Indexes
JVI-H	Not Recommended
JVI-C	104

	EPD	% Rank
BW	4.2	89%
WW	56	13%
YW	94	21%
SC	0.56	20%
Milk	24	39%
IMF	21	50%
REA	0.16	78%

NOTES: Lot 93 is a good bull for use on cows. His calves should be very heavy at Weaning and grow well through Yearling. Whichever time you sell your calves, these should be heavy & pay.



LOT 94	Ideal Dakota Territory 8D53	IBE SM
DOB: 03/31/18	Dakota Territory	# 64651

IDEAL BEEF EVALUATIONSM

BW	WW	YW	ADG
91 lbs	511 lbs	1151 lbs	4.00 lbs
Ratio	100	109	

Selection	Indexes
JVI-H	Not Recommended
JVI-C	107

	EPD	% Rank
BW	2.9	67%
WW	49	31%
YW	91	28%
SC	0.50	26%
Milk	28	13%
IMF	0.39	11%
REA	0.34	29%

NOTES: This bull can add value to your calf crop. His calves will be heavy and perform in the feedlot, including helping get premiums on the rail.

Top 28% YW, Top 11% IMF, Top 29% REA EPDs



LOT 95	Ideal Dakota Territory 8F57	IBE SM
DOB: 04/01/18	Dakota Territory	# 65413

IDEAL BEEF EVALUATIONSM

BW	WW	YW	ADG
80 lbs	571 lbs	1169 lbs	3.74
Ratio	98	105	

Selection	Indexes
JVI-H	Not Recommended
JVI-C	105

	EPD	% Rank
BW	2.7	61%
WW	47	39%
YW	91	29%
SC	0.13	70%
Milk	27	17%
IMF	0.41	9%
REA	0.39	20%

NOTES: Here's another bull that will add pounds to a calf crop and those calves will have Ribeye and Grade on the Rail. That equals premiums.

Top 29% YW, Top 9% IMF, & Top 20% REA



LOT 96	Ideal Dakota Territory 8D56	IBE SM
DOB: 04/01/18	Dakota Territory	# 64622

IDEAL BEEF EVALUATIONSM

BW	WW	YW	ADG
93 lbs	567 lbs	1257 lbs	4.31 lbs
Ratio	110	119	
Selection		Indexes	
JVI-H		Not Recommended	
JVI-C		102	

	EPD	% Rank
BW	3.2	73
WW	50	29%
YW	89	31%
SC	0.23	59%
Milk	25	28%
IMF	0.28	31%
REA	0.25	52%

NOTES: Moderate BW and will add plenty of pounds on Sale Day plus these calves will grade well.

LOT 98	Ideal Dakota Territory 8Y98	IBE SM
DOB: 03/10/18	Dakota Territory	# 65216

IDEAL BEEF EVALUATIONSM

BW	WW	YW	ADG
95 lbs	578 lbs	1301 lbs	4.52 lbs
Ratio	102	117	
Selection		Indexes	
JVI-H		Not Recommended	
JVI-C		95	

	EPD	% Rank
BW	5.5	97%
WW	54	16%
YW	86	40%
SC	0.66	12%
Milk	20	64%
IMF	0.19	56%
REA	0.27	47%

NOTES: Impressive ratios on this bull and he gained over 4.5 lbs / day. His calves will be heavy on sale day.

LOT 97	Ideal Dakota Territory 8G05	IBE SM
DOB: 04/07/18	Dakota Territory	# 65467

IDEAL BEEF EVALUATIONSM

BW	WW	YW	ADG
84 lbs	632 lbs	1170 lbs	3.36 lbs
Ratio	109	105	
Selection		Indexes	
JVI-H		118	
JVI-C		116	

	EPD	% Rank
BW	0.3	18%
WW	43	54%
YW	86	38%
SC	0.62	15%
Milk	26	23%
IMF	0.35	15%
REA	0.33	31%

NOTES: Versatility Bull! Use him on Heifers if you check them regularly or Use him on Cows. He will make feeder calves, his calves will have muscle & grade, and he should make good replacement heifers.



LOT 99	Ideal Dakota Territory 8S72	IBE SM
DOB: 03/17/18	Dakota Territory	# 63456

IDEAL BEEF EVALUATIONSM

BW	WW	YW	ADG
93 lbs	634 lbs	1186 lbs	3.45
Ratio	108	108	
Selection		Indexes	
JVI-H		Not Recommended	
JVI-C		90	

	EPD	% Rank
BW	5.6	97%
WW	53	20%
YW	85	41%
SC	0.83	4%
Milk	17	82%
IMF	0.02	92%
REA	0.01	93%

NOTES: The last bull in the sale with better than a Top 25% WW EPD; his calves should be heavy at Weaning.



LOT 100	Ideal Dakota Territory 8V11	IBE SM
DOB: 04/05/18	Dakota Territory	# 64961

IDEAL BEEF EVALUATIONSM

BW	WW	YW	ADG
86 lbs	522 lbs	1002 lbs	3.00 lbs
Ratio	97	100	
Selection		Indexes	
JVI-H		Not Recommended	
JVI-C		89	

NOTES: Moderate BW bull

	EPD	% Rank
BW	3.3	75%
WW	41	60%
YW	78	62%
SC	0.32	49%
Milk	22	47%
IMF	0.06	88%
REA	0.24	56%

LOT 101	Ideal Dakota Territory 8V37	IBE SM
DOB: 03/26/18	Dakota Territory	# 65017

IDEAL BEEF EVALUATIONSM

BW	WW	YW	ADG
90 lbs	516 lbs	917 lbs	2.51 lbs
Ratio	96	92	
Selection		Indexes	
JVI-H		Not Recommended	
JVI-C		89	

NOTES: Moderate BW bull.

	EPD	% Rank
BW	2.3	53%
WW	35	78%
YW	77	64%
SC	-0.15	92%
Milk	23	44%
IMF	0.15	72%
REA	0.28	43%



LOT 102	Ideal Dakota Territory 8T89	IBE SM
DOB: 03/31/18	Dakota Territory	# 65718

IDEAL BEEF EVALUATIONSM

BW	WW	YW	ADG
95 lbs	560 lbs	1100 lbs	3.38 lbs
Ratio	104	102	
Selection		Indexes	
JVI-H		Not Recommended	
JVI-C		97	

NOTES: Calves should grade well.

	EPD	% Rank
BW	0.7	22%
WW	32	84%
YW	76	65%
SC	0.22	61%
Milk	29	10%
IMF	0.37	13%
REA	0.14	81%



LOT 103	Ideal Dakota Territory 8V25	IBE SM
DOB: 03/21/18	Dakota Territory	# 64990

IDEAL BEEF EVALUATIONSM

BW	WW	YW	ADG
88 lbs	558 lbs	972 lbs	2.59 lbs
Ratio	104	97	
Selection		Indexes	
JVI-H		Not Recommended	
JVI-C		95	

	EPD	% Rank
BW	2.7	63%
WW	43	52%
YW	76	66%
SC	0.02	80%
Milk	23	43%
IMF	0.25	38%
REA	0.19	70%

NOTES: Individual WW Ratio of 104 & BW EPD below 3 lbs.

LOT 105	Ideal Dakota Territory 8S22	IBE SM
DOB: 04/15/18	Dakota Territory	# 63646

IDEAL BEEF EVALUATIONSM

BW	WW	YW	ADG
86 lbs	596 lbs	969 lbs	2.34 lbs
Ratio	101	88	
Selection		Indexes	
JVI-H		Not Recommended	
JVI-C		88	

	EPD	% Rank
BW	4.8	94%
WW	44	49%
YW	74	70%
SC	0.30	51%
Milk	15	92%
IMF	0.23	44%
REA	0.21	63%

NOTES:

LOT 104	Ideal Dakota Territory 8M35	IBE SM
DOB: 03/28/18	Dakota Territory	# 63981

IDEAL BEEF EVALUATIONSM

BW	WW	YW	ADG
89 lbs	627 lbs	1097 lbs	2.94 lbs
Ratio	97	96	
Selection		Indexes	
JVI-H		Not Recommended	
JVI-C		106	

	EPD	% Rank
BW	1.0	27%
WW	42	59%
YW	75	68%
SC	0.59	17%
Milk	22	50%
IMF	0.19	59%
REA	0.23	58%

NOTES: Moderate BW bull.

LOT 106	Ideal Traveler 8W41	IBE SM
DOB: 04/05/18	SIRE LINE: Traveler	# 64111

SIRE: Ideal Traveler 61

IDEAL BEEF EVALUATIONSM

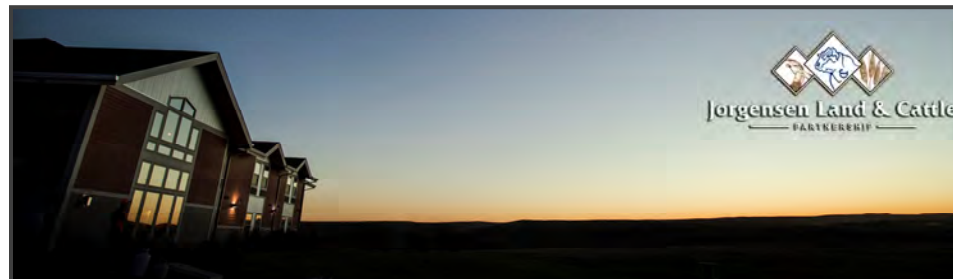
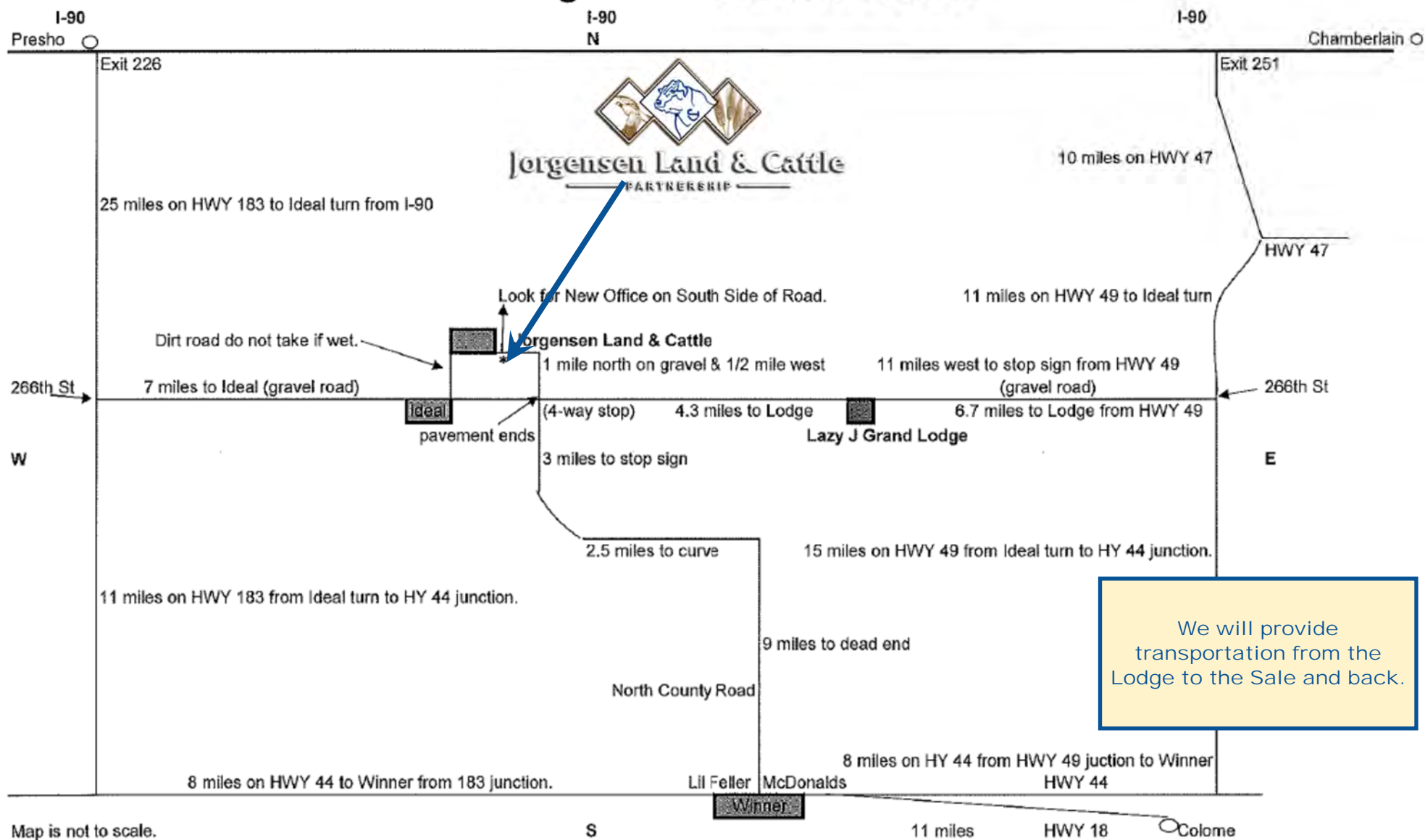
BW	WW	YW	ADG
90 lbs	541 lbs	1080 lbs	3.36
Ratio	91	95	
Selection		Indexes	
JVI-H		Not Recommended	
JVI-C		82	

	EPD	% Rank
BW	2.4	56%
WW	32	84%
YW	56	92%
SC	-0.23	96%
Milk	23	47%
IMF	0.31	23%
REA	0.14	81%

NOTES: Top 23% IMF; calves should grade well.



Directions to Jorgensen Land & Cattle



2020 Fall Pasture Ready SMARTBULLS™ SALE



AT THE FARM IN IDEAL, SD



OCT. 2, 2020 • 6:30 PM CDT

OR ONLINE AT

DVAuction
Broadcasting Real-Time Auctions

31250 265th Street • Ideal, SD 57541

800-548-2855

Transportation provided from Lodge to Sale