



JORGENSEN LAND & CATTLE

2ND ANNUAL
PASTURE READY
SMARTBULLS™ SALE

WATCH & BID ON

DVAuction
Broadcasting Real-Time Auctions

SATURDAY, OCTOBER 2ND, 2021

6:30 PM CDT

AT THE RANCH IN IDEAL, SD



Dear Cattlemen & Cattlewomen,

Wow, we've just about traveled around the sun again and what a trip this year has been. We are quickly approaching Saturday, October 2nd, 2021, & our 2nd Annual **Fall Pasture Ready SMARTBULLS™ Sale**.

We first began selling **SMARTBULLS™**, over 20 years ago and their popularity among Cattlemen continues to grow because they have the capacity and age to breed your cows without a bunch of pampering and because they can breed more cows with fewer bulls than they would need if using younger bulls.

The **IDEAL BEEF EVALUATIONSM** (or **IBESM**) increases the genetic predictive power of our **SMARTBULLS™**. The **IBE** is a proprietary genetic evaluation that was developed through the cooperative efforts of Jorgensen Land & Cattle and Zoetis. It combines the vast phenotypic dataset (performance, calving, ultrasound, and reproduction) of Jorgensen Land & Cattle, with the genetic and analytical teams of Zoetis — along with their gold standard HD50K genomic test. We are extremely excited about the insights that the Ideal Beef Evaluation provides. These insights help us provide more accurate genetic recommendations to our customers.

We want to thank our customers, family and friends for their continued support and belief in our breeding program at Jorgensen Land & Cattle. We appreciate each of you!

The **2021 Fall Pasture Ready SMARTBULLS™ Sale** will be incorporate both in-person and online bidding through DVAuction.com. We invite you to join us in-person at our farm headquarters or through <https://www.dvauction.com/events/122912> for the sale. Videos of the Sale Bulls will be available by Monday, September 27th. Please call or email us with any questions you might have.

Our toll-free number is 1-800-548-2855 or email us at info@jorgensenfarms.com

Thank you,

The Jorgensen Family

2020 FALL PASTURE READY SMARTBULLS™ SALE

TERMS & CONDITIONS

SALE LOCATION:

The sale will be held at the farm headquarters in Ideal, SD.

SALE DAY TELEPHONES:

Greg Cell Phone: 605-840-2855 Bryan Cell Phone: 605-840-9005

Cody Cell Phone: 605-840-1780 Nick Cell Phone: 605-840-0316

David Thomas: 865-257-1873 Andy Cell Phone: 605-207-0400

INSPECTION OF CATTLE:

Bulls are penned at the farm and available for inspection; please call to arrange times.

HEALTH: All cattle will be sold with health papers for interstate shipment.

FREE REGIONAL DELIVERY: Jorgensen Land & Cattle will cooperate in arranging trucking, offering free regional delivery and a maximum cost of \$100 per bull anywhere in the lower 48 states to a central location convenient to you. Please contact Karrisa Bartels at 800-548-2855 (BULL) to arrange delivery.

TERMS AND CONDITIONS: Cattle will sell under the suggested Terms and Conditions of the American Angus Association (https://www.angus.org/pub/suggested_sale_terms.pdf).

INSURANCE: Insurance will be available sale day. Please inform the clerk at the time of settlement if you want insurance. We take every precaution for the care and safety of your purchases; however, we urge all buyers to insure purchases for safe delivery to you.

LIABILITY: All persons who attend the sale do so at their own risk, legal or otherwise, for their safety or the behavior of the animals.

ANNOUNCEMENTS: Any announcements from the auction block will take precedence over the information listed in this sale book. A supplement sheet will be available on sale day with up-to-date performance information.

ABSENTEE BUYER OPTIONS: If you cannot attend, you may still participate by sending your bid to the Auctioneer or a member of the Jorgensen team, or you can

View & Bid in Real-Time on DVAuction (<https://www.dvauction.com/>).



AUCTIONEER: Roger Jacobs

JORGENSEN LAND & CATTLE
31250 265TH STREET
IDEAL, SD 57541-9230
TOLL FREE: 1-800-548-BULL (2855)



Explanations of Performance Records Provided through the



LOT #	Bull Name			Assn Reg #	DOB	Sire Line	Sire Name						
	Name of Bull			1	xx/yyyy/2019	2	Name of Sire of Bull						
BW	Adj WW	Adj YW	ADG		BW	WW	YW	SC	Milk	IMF	REA	Selection Indexes	
3	4	5	6		11	12	13	14	15	16	17	JVI-H	9
Ratio	7	8		% Rank								JVI-C	10

1) ASSN & REG #: Ideal Beef Evaluation or American Angus Assn.

2) Sire Line The Y-chromosome can only be passed from father to son and certain traits seem to follow the sire line. Five Sire Lines represent the majority of the bulls in this sale: Rito, Eldorado, Traveler, Emulous, & Emulation.

Individual Performance Data

3) BW: Individual's Birth Weight .

4 & 7) WW & Ratio: Weaning Weight adjusted to 205 days of age. WW Ratio indicates pre-weaning growth relative to contemporaries. 100 is Average.

5 & 8) YW & Ratio: Yearling Weight adjusted to 365 days of age. YW Ratio indicates both pre- and post-weaning gain relative to contemporaries. 100 is Average.

6) ADG: Average Daily Gain during the test feeding period & measures the growth rate of individual bull calves on feed.

The Jorgensen Versatility Indexes were developed for helping spot bulls suitable for use on Heifers (**JVI-H**) and for use on Cows (**JVI-C**).

See pages 62 & 63 for more information.

9) JVI-H: A combined Index of traits that helps simplify selection for bulls that are better suited for use on heifers, where lower Birth Weight has more impact than growth, Milk, or carcass traits. Higher numbers are better. Bulls with individual BW greater than 85 lbs or a BW EPD greater than 2.5 receive a JVI-H mark of **Not Recommended** for heifers. You can use your judgement to balance bulls with higher JVI-H scores along with their BW EPDs.

10) JVI-C: The JVI-C index reduces the impact of BW and increases the impact of growth (WW & YW), Milk, SC, & carcass traits. Higher JVI-C scores indicate better overall genetic merit; higher scores indicate better performing calves.

Explanation of Performance Records Provided through the



EPD & % Rank

EPDs are calculated in the Ideal Beef Evaluation through work with Zoetis Genetics, and are current as of 9/15/21. % Rank tells you how that animal's EPD ranks against all of the other animals within the Ideal Beef Evaluation; it is a relative term. Percentages shaded in green rank in the Top 35%, 15%

- 11) BW:** Prediction of the sire's probable influence on Birth Weight of his calves; expressed in pounds.
- 12) WW:** Predictor of a sire's ability to transmit pre-weaning growth to his calves; expressed in pounds.
- 13) YW:** Predictor of a sire's ability to transmit growth to his calves; expressed in pounds.
- 14) SC:** Predictor of a sire's ability to impact the scrotal size of his calves; expressed in centimeters.
- 15) MILK:** Predictor of a sire's genetic merit for milk production in his daughters; expressed in pounds of calf weaned due to milking ability of his daughters.
- 16) IMF:** Predictor of the difference in a sire's calves for Percent Intramuscular Fat (IMF) in the ribeye. Percent IMF is the common ultrasound term for Marbling and higher numbers are indicative of higher Carcass Quality Grades.
- 17) REA:** Predictor of the difference in ribeye area of a sire's progeny; expressed in square inches.



ELDORADO SIRE LINE

Eldorado 156 of Ideal was a long-spined, true performance Pathfinder Sire who left his mark on this herd and many others.

Today, nearly 40 years after his birth, his progeny still hold impressive weaning and yearling weight ratios of 102 and 103, respectively. The Eldorado line developed a well-earned reputation for growth and maternal traits.

Today, a ride through our herd will cause you to notice the broody yellow-tag cows sired by Ideal 9524, and we are impressed by the young daughters of Ideal Encore.

Genetic Contributions: Length of Body, Growth, Outstanding Females.



LOT #	Bull Name				AAA Reg #	DOB	Sire Line	Sire Name						
1	Ideal 9468 Eldorado of Encor				19624473	02/01/2019	Eldorado	Ideal Encore of 9524 Lady						
BW	Adj WW	Adj YW	ADG		BW	WW	YW	SC	Milk	IMF	REA	Selection Indexes		
75	535	1233	4.37		IBE EPDs	-0.2	53	111	1.67	29	0.63	0.24	JVI-H	128
Ratio	93	109			% Rank	15%	29%	7%	2%	20%	2%	80%	JVI-C	124

NOTES: The first of three, Registered Angus 1/2-brothers; Lots 1, 2, & 3
Lot 1 ranks in the Top 2% for IMF; calves should gain & grade well

LOT #	Bull Name				AAA Reg #	DOB	Sire Line	Sire Name						
2	Ideal 9487 Eldorado of Encor				19624487	02/21/2019	Eldorado	Ideal Encore of 9524 Lady						
BW	Adj WW	Adj YW	ADG		BW	WW	YW	SC	Milk	IMF	REA	Selection Indexes		
85	611	1291	4.25		IBE EPDs	-0.9	47	102	0.78	30	0.57	0.27	JVI-H	132
Ratio	107	114			% Rank	9%	52%	19%	28%	14%	4%	72%	JVI-C	131

NOTES: Registered Angus bull; 1/2-brother to Lots 1 & 3
Lot 2 ranks in the top 4% for IMF; calves should gain & grade well

LOT #	Bull Name				AAA Reg #	DOB	Sire Line	Sire Name						
3	Ideal 9490 Eldorado of Encor				19624490	02/21/2019	Eldorado	Ideal Encore of 9524 Lady						
BW	Adj WW	Adj YW	ADG		BW	WW	YW	SC	Milk	IMF	REA	Selection Indexes		
83	628	1216	3.67		IBE EPDs	2.1	59	115	0.25	23	0.57	0.24	JVI-H	116
Ratio	110	107			% Rank	55%	12%	5%	63%	61%	4%	81%	JVI-C	120

NOTES: Registered Angus bull; 1/2-brother to Lots 1 & 2

LOT #	Bull Name				IBE Reg #	DOB	Sire Line	Sire Name						
4	Ideal Eldorado 9Y15				70331	03/21/2019	Eldorado	Ideal 3596 of 9524 Lady						
BW	Adj WW	Adj YW	ADG		BW	WW	YW	SC	Milk	IMF	REA	Selection Indexes		
78	521	1098	3.60		IBE EPDs	1.6	46	89	0.85	25	0.24	0.37	JVI-H	102
Ratio	92	96			% Rank	43%	56%	47%	24%	43%	67%	45%	JVI-C	101

NOTES:



WE HOPE WE GET TO SEE YOUR FACE AT OUR SALE BUT IF THAT'S NOT AN OPTION WE'LL BRING THE SALE TO YOU

In-Person

We enjoy getting together with friends, family, & customers at Jorgensen Land & Cattle. There is something special about having a big crowd of folks at our sales; we love watching people visit, look through the bulls, talk cattle & catch-up on family. We sure hope you can attend. However, if you can't join us this year, we have been working to make sure you can participate from your home, farm or another convenient location.

Visit Ahead of the Sale

For decades, we have done business by phone & on a handshake. That won't change! We would be happy to schedule a time for you to look through the bulls or talk you through them by phone ahead of the sale. We can talk about what kind of bulls you want this year and we will arrange for someone to represent you at the sale, based on your instructions. It is simple and we guarantee your satisfaction. Just call us: 800-548-BULL (2855).

Watch & Bid On-Line & in Real-Time

If you have high-speed internet service, On-line bidding is a great way to participate - if you just can't be here in-person. In 2019, about 15% of our lots were sold through www.DVAuction.com. In 2020, the percentage of lots sold on-line increased to 33%.

Unfortunately, dial-up or satellite internet generally will not keep-up and is not recommended for On-line bidding.

- 1) Create an account at www.dvauction.com under the "Create New Account" tab
- 2) Apply for bidding by clicking the "Details" tab at least 24 hours prior to the sale
- 3) Tune in for the sale and make your purchases – or— Let DVAuction represent your bid

If you have questions, please call:

402-316-5460



Real-Time Phone Bidding

Real-time phone bidding is more cumbersome than arranging for someone to represent you ahead of time. Our sale moves faster than most bull sales. The average time for a bull to be sold is less than one minute, so it works best for us to talk ahead of the sale and establish a game plan for you. Please contact one of the individuals listed below to visit about what you need and how we can work with you.

SALE DAY TELEPHONES:

Greg Cell: 605-840-2855

Nick Cell: 605-840-0316

Cody Cell: 605-840-1780

David Cell: 865-257-1873

Bryan Cell: 605-840-9005

Andy Cell: 605-207-0400

TRAVELER SIRE LINE

QAS Traveler 23-4 is the best-known son of “Band 105”. A 2017 Angus Foundation-funded research project revealed that “Traveler” was the most influential sire in the Angus breed, as measured by genetic contribution. His genetics make up about 10% of Angus animals born today. Today, his daughters number over 9,000 cows & post a combined 101 WW ratio. QAS Traveler 23-4 produced numerous sons who have had a tremendous positive influence on the Jorgensen herd and the entire Angus breed.

Genetic Contributions:

Calving Ease, Marbling, Functional Females.



LOT #	Bull Name			IBE Reg #	DOB	Sire Line	Sire Name							
6	Ideal Traveler 9A04			69061	02/11/2019	Traveler	Connealy Comrade 1385							
BW	Adj WW	Adj YW	ADG		BW	WW	YW	SC	Milk	IMF	REA	Selection Indexes		
75	596	1208	3.83		IBE EPDs	-1.7	40	115	-0.67	24	0.47	0.29	JVI-H	129
Ratio	99	100			% Rank	4%	77%	4%	97%	56%	13%	68%	JVI-C	122

NOTES: The first of three Traveler-line, 1/2-brothers; Lots 6, 8 & 11

LOT #	Bull Name			IBE Reg #	DOB	Sire Line	Sire Name							
8	Ideal Traveler 9Q04			69133	02/10/2019	Traveler	Connealy Comrade 1385							
BW	Adj WW	Adj YW	ADG		BW	WW	YW	SC	Milk	IMF	REA	Selection Indexes		
65	543	1148	3.78		IBE EPDs	-4.9	14	59	-0.43	21	0.42	0.44	JVI-H	124
Ratio	90	95			% Rank	0%	100%	97%	93%	79%	21%	27%	JVI-C	104

NOTES: 1/2-brother to Lots 6 & 11

LOT #	Bull Name			IBE Reg #	DOB	Sire Line	Sire Name							
11	Ideal Traveler 9A33			69097	02/07/2019	Traveler	Connealy Comrade 1385							
BW	Adj WW	Adj YW	ADG		BW	WW	YW	SC	Milk	IMF	REA	Selection Indexes		
81	539	1400	5.38		IBE EPDs	-1.1	26	69	0.08	15	0.22	0.64	JVI-H	107
Ratio	90	115			% Rank	7%	95%	91%	73%	98%	70%	4%	JVI-C	97

NOTES: 1/2-brother to Lots 6 & 8

EMULATION SIRE LINE

The Emulation line of cattle brings a lot to the table for Cow/Calf producers. Jorgensen Land & Cattle carefully evaluated and very selectively hand-pick some Emulation sires who retain the best traits of the Emulation line and still exhibit the disposition that we want in our cattle.

Genetic Contributions: Fertility, Maternal Ability, Longevity, Excellent Udder Structure, Soundness and Carcass Quality —
All traits of importance to building profitability into cow herds.



LOT #	Bull Name				AAA Reg #	DOB	Sire Line			Sire Name			
12	Ideal 9832 Emulation of Ridr				19657205	02/12/2019	Emulation			Sinclair Shadow Rider 1741			
BW	Adj WW	Adj YW	ADG		BW	WW	YW	SC	Milk	IMF	REA	Selection Indexes	
80	609	1280	4.19	IBE EPDs	0.8	52	102	-0.33	28	0.43	0.43	JVI-H	114
Ratio	106	113		% Rank	28%	33%	19%	91%	25%	20%	30%	JVI-C	112

NOTES: Registered Angus bull. Gained over 4 lbs per day on test. Low BW & very good JVI-H & JVI-C scores

LOT #	Bull Name				IBE Reg #	DOB	Sire Line			Sire Name			
13	Ideal Emulation 9R53				67868	03/31/2019	Emulation			Sinclair Piney Creek 6FV16			
BW	Adj WW	Adj YW	ADG		BW	WW	YW	SC	Milk	IMF	REA	Selection Indexes	
82	616	1122	3.16	IBE EPDs	-0.6	47	88	0.61	29	0.54	0.29	JVI-H	120
Ratio	108	100		% Rank	12%	53%	52%	39%	19%	6%	67%	JVI-C	116

NOTES: Excellent JVI—H & JVI-C scores

The Loft at the
Jorgensen Land & Cattle
headquarters will host
**the 2021 Fall Pasture-Ready
SMARTBULLS™ Sale**





The Jorgensen family has always strived to find better ways to do things, whether creating better beef cattle genetics, crops or soil conservation practices, and that heritage of innovation led us to work with Zoetis to create the **IDEAL BEEF EVALUATION**.

This proprietary genetic evaluation is the product of a partnership between Zoetis and Jorgensen Land & Cattle. This joint project combines the tremendous performance testing data set & DNA bank of Jorgensen Land & Cattle with the genetics, analytical, and R&D teams of Zoetis, along with their gold standard HD50K genomic test.

The Ideal Beef Evaluation is backed by over 150,000 phenotypic performance observations from both Registered & Commercial Angus herds and more than 10,000 HD50K genomic tested animals. The combination of performance and genotypic data from these herds creates greater selection accuracy for our herd and our customers.

How Does the **IDEAL BEEF EVALUATION**SM Benefit Cattlemen

We always strive to match the right bull with the needs of each bull customer and the Ideal Beef Evaluation gives us a better understanding of the genetic makeup of each of our bulls, and that allows our commercial customers to make more informed bull buying and leasing decisions to help them reach their goals.

Genetic Predictions

Our initial launch of the Ideal Beef Evaluation (2019) produced genomic-enhanced EPDs for **BW, WW, YW, SC, Milk, IMF, REA, and FAT**. In addition, we incorporated those data into two easy-to-use Selection Indexes: a **Jorgensen Versatility Index (JVI)** for bulls to be used on Heifers (**JVI-H**) and for bulls to be used on Cows (**JVI-C**).

Current Traits & Indexes

- Birth Weight (**BW**) • Intramuscular Fat (**IMF**)
- Weaning Weight (**WW**) • Ribeye Area (**REA**)
- Yearling Weight (**YW**) • Rib Fat (**FAT**)
- Scrotal Circumference (**SC**) • Rump Fat (**RFAT**)
- Milk (**Milk**) • Yearling Breeding Soundness (**YBS**)
- **Jorgensen Versatility Index – Heifers (JVI-H)**
- **Jorgensen Versatility Index – Cows (JVI-C)**



Better Doesn't Need to Be More Complicated

How many numbers do bull buyers really want to juggle when selecting bulls? Bull selection can be as complicated as you want ... but it doesn't have to be. Our new JVI-H and JVI-C allow you to simultaneously select for more than one trait without feeling like you are trying to do algebra.

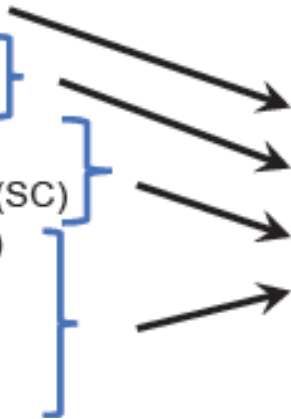
Announcing Jorgensen Versatility Indexes • JVI-H and JVI-C

Jorgensen Versatility Indexes (**JVI**) are Selection Indexes that were created to help commercial cattlemen take advantage of the power of the Ideal Beef Evaluation without having to juggle multiple numbers. Selection Indexes are tools that help cattlemen select for multiple traits by combining those traits into one single number. Our partnership with Zoetis produced the **JVI-H**, which incorporates multiple traits and weights them with priorities that favor bulls more suitable for use on Heifers. The **JVI-C** places less emphasis on Birth Weight and allows more selection for Growth and Carcass traits.

◆ Higher Index Scores indicate greater overall genetic merit.

GE-EPDs Incorporated in the JVI-H and JVI-C

- Birth Weight (BW)
- Weaning Weight (WW)
- Yearling Weight (YW)
- Milk (Milk)
- Scrotal Circumference (SC)
- Intramuscular Fat (IMF)
- Ribeye Area (REA)
- Rib Fat (FAT)
- Rump Fat (RFAT)



Jorgensen Versatility Indexes

- JVI-H (Bulls for Heifers)
- JVI-C (Bulls for Cows)



Jorgensen Land & Cattle

zoetis™



IDEAL BEEF EVALUATIONSM

EMULOUS SIRE LINE

The Emulous line was largely developed during the Certified Meat Sire Program period which measured a sire's progeny in meaningful contemporary group sizes compared to a reference sire. Selection within this environment resulted in improved gain-ability and carcass merit. In addition, the Emulous cattle were also very sound cattle who were noted for fertility and longevity.

Genetic Contributions:

Fertility, Longevity, Sound Feet and Legs, Gain-ability, and Carcass Merit.



LOT #	Bull Name			IBE Reg #	DOB	Sire Line	Sire Name						
15	Ideal Emulous 9A70			69243	02/28/2019	Emulous	Ideal 5601 of 1281 Blkbrd						
BW	Adj WW	Adj YW	ADG	BW	WW	YW	SC	Milk	IMF	REA	Selection Indexes		
85	574	1371	4.98	IBE EPDs	1.3	42	102	0.15	19	0.30	0.22	JVI-H	106
Ratio	95	113		% Rank	36%	71%	19%	70%	90%	53%	83%	JVI-C	104

NOTES: Gained over 4 lbs per day on test. Good JVI-H & JVI-C scores

LOT #	Bull Name			IBE Reg #	DOB	Sire Line	Sire Name						
16	Ideal Emulous 9A07			69217	03/05/2019	Emulous	Ideal 5601 of 1281 Blkbrd						
BW	Adj WW	Adj YW	ADG	BW	WW	YW	SC	Milk	IMF	REA	Selection Indexes		
77	582	1143	3.51	IBE EPDs	0.5	42	69	-0.34	24	0.41	0.31	JVI-H	102
Ratio	97	94		% Rank	23%	70%	91%	91%	53%	25%	61%	JVI-C	97

NOTES:

LOT #	Bull Name			IBE Reg #	DOB	Sire Line	Sire Name						
17	Ideal Emulous 9A51			69188	03/01/2019	Emulous	Ideal 3270 of 1281 Jilt						
BW	Adj WW	Adj YW	ADG	BW	WW	YW	SC	Milk	IMF	REA	Selection Indexes		
85	633	1228	3.72	IBE EPDs	2.3	49	86	0.04	24	0.25	0.41	JVI-H	96
Ratio	105	101		% Rank	57%	47%	56%	75%	57%	65%	35%	JVI-C	96

NOTES:

LOT #	Bull Name	IBE Reg #	DOB	Sire Line	Sire Name
18	Ideal Traveler 9A32	68982	03/08/2019	Traveler	Hoos Incentive 708 TE43

BW	Adj WW	Adj YW	ADG		BW	WW	YW	SC	Milk	IMF	REA	Selection Indexes		
81	590	1182	3.70		IBE EPDs	2.5	48	118	0.27	12	0.23	0.29	JVI-H	107
Ratio	98	98			% Rank	---	---	---	---	---	---	---	JVI-C	110

NOTES:

LOT #	Bull Name	IBE Reg #	DOB	Sire Line	Sire Name
19	Ideal Traveler 9L33	68039	04/07/2019	Traveler	Ideal 2373 of 7773 Blackcap

BW	Adj WW	Adj YW	ADG		BW	WW	YW	SC	Milk	IMF	REA	Selection Indexes		
77	613	1253	4.00		IBE EPDs	1.6	53	94	0.69	26	0.29	0.35	JVI-H	107
Ratio	102	110			% Rank	43%	29%	35%	33%	37%	54%	49%	JVI-C	108

NOTES:

LOT #	Bull Name	AAA Reg #	DOB	Sire Line	Sire Name
20	Ideal 9676 Traveler of 0116	19681047	01/26/2019	Traveler	Coleman Emblazon 0116

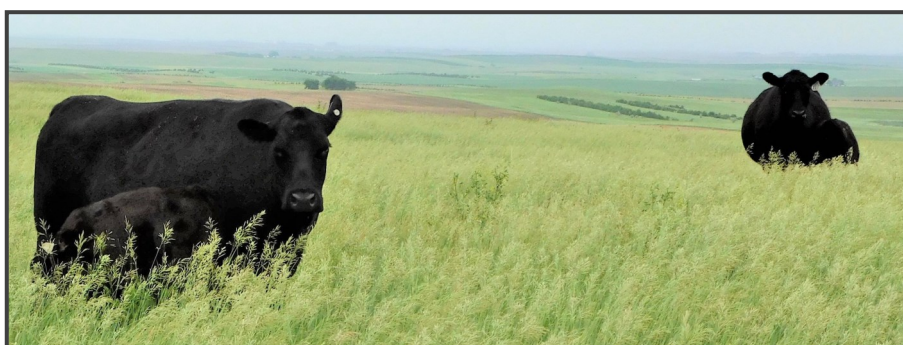
BW	Adj WW	Adj YW	ADG		BW	WW	YW	SC	Milk	IMF	REA	Selection Indexes		
72	547	1276	4.55		IBE EPDs	0.3	43	87	0.03	22	0.29	0.22	JVI-H	106
Ratio	95	113			% Rank	21%	69%	52%	76%	66%	56%	85%	JVI-C	101

NOTES: Registered Angus bull that gained over 4.5 lbs per day on test

LOT #	Bull Name	IBE Reg #	DOB	Sire Line	Sire Name
21	Ideal Traveler 9A46	69184	03/19/2019	Traveler	Ideal 7336 of 4355 3170

BW	Adj WW	Adj YW	ADG		BW	WW	YW	SC	Milk	IMF	REA	Selection Indexes		
83	581	1191	3.81		IBE EPDs	0.7	39	86	0.19	18	0.07	0.42	JVI-H	101
Ratio	96	98			% Rank	27%	80%	56%	67%	92%	91%	32%	JVI-C	97

NOTES:





LOT #	Bull Name			IBE Reg #	DOB	Sire Line	Sire Name						
23	Ideal Traveler 9L53			68069	03/20/2019	Traveler	Ideal 4223 of 1168 Blkbrd						
BW	Adj WW	Adj YW	ADG		BW	WW	YW	SC	Milk	IMF	REA	Selection Indexes	
80	524	1025	3.14	IBE EPDs	-1.3	30	70	0.06	22	0.36	0.48	JVI-H	110
Ratio	87	90		% Rank	6%	92%	90%	75%	72%	38%	20%	JVI-C	100

NOTES:

LOT #	Bull Name			IBE Reg #	DOB	Sire Line	Sire Name						
24	Ideal Traveler 9Q31			67875	03/15/2019	Traveler	Ideal 5346 of 0116 Betty						
BW	Adj WW	Adj YW	ADG		BW	WW	YW	SC	Milk	IMF	REA	Selection Indexes	
65	509	1118	3.80	IBE EPDs	-2.3	19	69	0.61	22	0.42	0.42	JVI-H	113
Ratio	90	99		% Rank	2%	98%	90%	38%	72%	21%	31%	JVI-C	101

NOTES:

LOT #	Bull Name			IBE Reg #	DOB	Sire Line	Sire Name						
25	Ideal Traveler 9713			67686	02/20/2019	Traveler	Connealy Stingray 9618						
BW	Adj WW	Adj YW	ADG		BW	WW	YW	SC	Milk	IMF	REA	Selection Indexes	
76	516	1117	3.76	IBE EPDs	-2.0	12	56	0.34	17	0.29	0.41	JVI-H	102
Ratio	93	97		% Rank	---	---	---	---	---	---	---	JVI-C	88

NOTES:

LOT #	Bull Name			IBE Reg #	DOB	Sire Line	Sire Name						
26	Ideal Traveler 9L25			68143	03/19/2019	Traveler	Ideal 4223 of 1168 Blkbrd						
BW	Adj WW	Adj YW	ADG		BW	WW	YW	SC	Milk	IMF	REA	Selection Indexes	
76	583	1130	3.42	IBE EPDs	0.2	39	71	-0.12	24	0.19	0.30	JVI-H	100
Ratio	97	99		% Rank	19%	78%	88%	83%	55%	76%	65%	JVI-C	93

NOTES:

DAKOTA TERRITORY BULLS

When utilizing multi-sire groups with cows, we can't always establish a certain sire for a small percentage of bulls. We can measure the performance at multiple stages of the development process and weed-out any animals that don't deserve to become "Sires".

Dakota Territory bulls still go through the same development program as our other bulls. We can build EPDs from their performance data versus contemporary bulls. Their performance data is entered into and analyzed within the **IBESM** genetic evaluation process to project their genetic merit via **IBESM** EPDs.

And, Dakota Territory bulls are protected by the same rigorous herd health program and must pass the same health screenings, and pass multiple Breeding Soundness Exams along their path to becoming **SMARTBULLSTM**.

You will find some good commercial bulls under the banner of Dakota Territory bulls.

LOT #	Bull Name	IBE Reg #	DOB	Sire Line	Sire Name
27	Ideal Dakota Territory 9B29	67732	03/30/2019	Dakota Territory	

BW	Adj WW	Adj YW	ADG		BW	WW	YW	SC	Milk	IMF	REA	Selection Indexes		
83	740	1229	3.06		1.7	48	94	0.39	29	0.35	0.18	JVI-H	101	
Ratio	134	107			% Rank	45%	49%	36%	53%	17%	40%	90%	JVI-C	101

NOTES:

LOT #	Bull Name	IBE Reg #	DOB	Sire Line	Sire Name
28	Ideal Dakota Territory 9Y27	70347	03/21/2019	Dakota Territory	

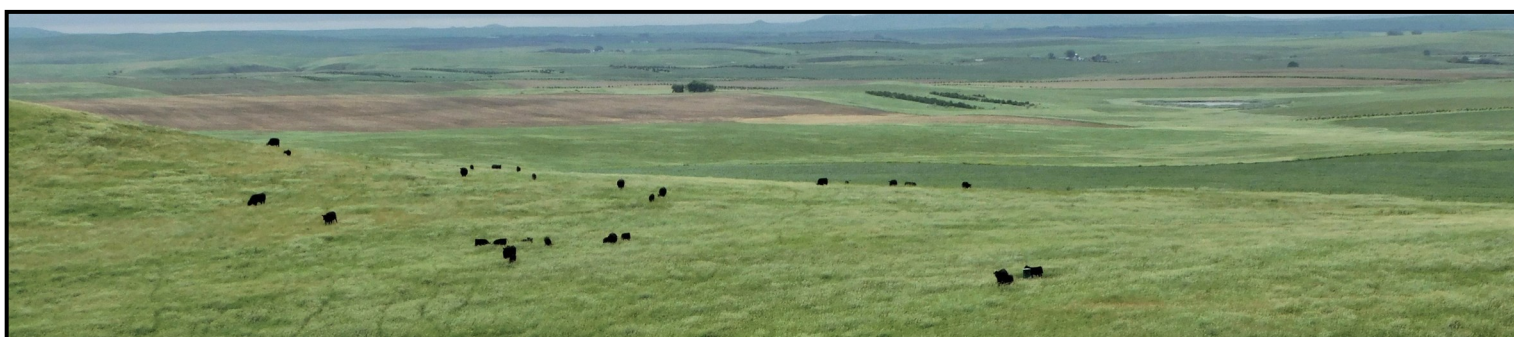
BW	Adj WW	Adj YW	ADG		BW	WW	YW	SC	Milk	IMF	REA	Selection Indexes		
80	569	1151	3.64		1.0	54	94	0.53	24	0.29	0.40	JVI-H	113	
Ratio	101	101			% Rank	31%	25%	37%	44%	51%	56%	36%	JVI-C	113

NOTES: Very good JVI-H & JVI-C scores

LOT #	Bull Name	IBE Reg #	DOB	Sire Line	Sire Name
29	Ideal Dakota Territory 9R16	67966	04/21/2019	Dakota Territory	

BW	Adj WW	Adj YW	ADG		BW	WW	YW	SC	Milk	IMF	REA	Selection Indexes		
78	605	1296	4.32		1.6	52	90	0.58	31	0.45	0.28	JVI-H	106	
Ratio	106	115			% Rank	42%	34%	44%	40%	8%	16%	72%	JVI-C	106

NOTES: Gained over 4 lbs per day on test



LOT #	Bull Name	IBE Reg #	DOB	Sire Line	Sire Name
30	Ideal Dakota Territory 9L37	68116	04/20/2019	Dakota Territory	

BW	Adj WW	Adj YW	ADG		BW	WW	YW	SC	Milk	IMF	REA	Selection Indexes	
77	595	1071	2.98	IBE EPDs	0.2	35	76	-0.12	27	0.23	0.33	JVI-H	98
Ratio	99	94		% Rank	19%	87%	81%	83%	31%	69%	57%	JVI-C	91

NOTES:

LOT #	Bull Name	IBE Reg #	DOB	Sire Line	Sire Name
31	Ideal Dakota Territory 9P18	70162	04/06/2019	Dakota Territory	

BW	Adj WW	Adj YW	ADG		BW	WW	YW	SC	Milk	IMF	REA	Selection Indexes	
80	653	1185	3.32	IBE EPDs	-0.5	35	76	0.41	21	0.32	0.32	JVI-H	108
Ratio	110	110		% Rank	12%	88%	81%	52%	75%	49%	58%	JVI-C	101

NOTES: Good JVI-H & JVI-C scores. Low BW

LOT #	Bull Name	IBE Reg #	DOB	Sire Line	Sire Name
32	Ideal Dakota Territory 9A71	69121	04/05/2019	Dakota Territory	

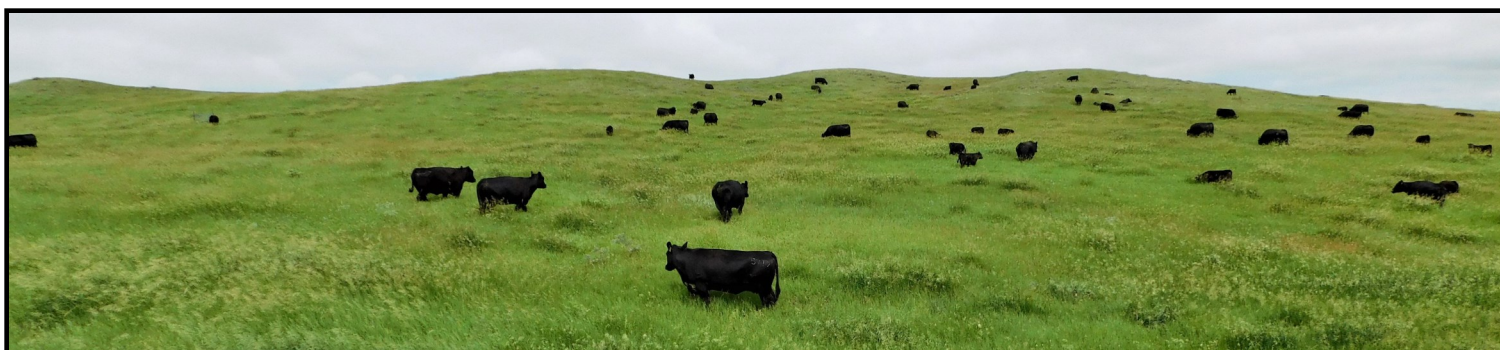
BW	Adj WW	Adj YW	ADG		BW	WW	YW	SC	Milk	IMF	REA	Selection Indexes	
85	611	1289	4.24	IBE EPDs	-0.6	41	74	0.40	29	0.15	0.22	JVI-H	107
Ratio	101	106		% Rank	11%	74%	83%	53%	18%	83%	84%	JVI-C	99

NOTES: Gained over 4 lbs per day on test

LOT #	Bull Name	IBE Reg #	DOB	Sire Line	Sire Name
33	Ideal Dakota Territory 9L47	68130	04/07/2019	Dakota Territory	

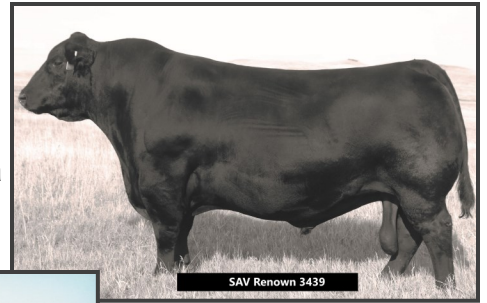
BW	Adj WW	Adj YW	ADG		BW	WW	YW	SC	Milk	IMF	REA	Selection Indexes	
80	579	1168	3.68	IBE EPDs	0.9	40	79	1.16	25	0.26	0.18	JVI-H	101
Ratio	96	102		% Rank	30%	76%	73%	11%	46%	63%	89%	JVI-C	98

NOTES:



RITO SIRE LINE

SAV Resource 1441 and SAV Renown 3439 are powerful, full brother grandsons of the Jorgensen foundation sire, RR Rito 707. "Rito 7075," the sire of Resource and Renown, was bred in the Jorgensen herd by combining the Rito 707 with the productive foundation Jorgensen female, Ideal 3407. Each of these bulls trace 59 times to Rito 707 and have a total of 112 Jorgensen-bred or -owned ancestors in their foundations.

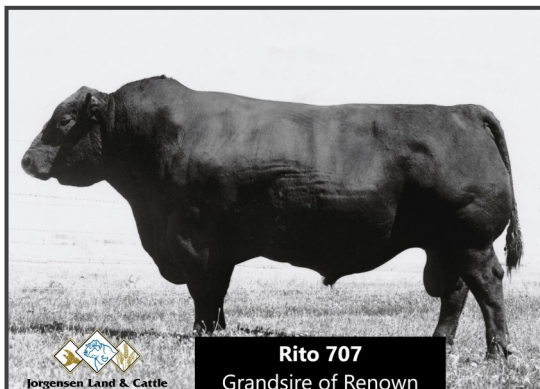


LOT #	Bull Name			IBE Reg #	DOB	Sire Line	Sire Name						
35	Ideal Rito 9725			67693	03/22/2019	Rito	Ideal 6118 of RES Blackcap						
BW	Adj WW	Adj YW	ADG		BW	WW	YW	SC	Milk	IMF	REA	Selection Indexes	
79	710	1125	2.59	IBE EPDs	2.0	55	91	0.80	19	0.04	0.57	JVI-H	104
Ratio	129	101		% Rank	51%	24%	43%	27%	89%	94%	9%	JVI-C	106

NOTES: 1/4-brother to lots 37—39

LOT #	Bull Name			IBE Reg #	DOB	Sire Line	Sire Name						
36	Ideal Rito 9E87			69433	04/23/2019	Rito	Ideal 7122 of REN Blackcap						
BW	Adj WW	Adj YW	ADG		BW	WW	YW	SC	Milk	IMF	REA	Selection Indexes	
97	729	1220	3.07	IBE EPDs	4.8	74	133	0.46	31	0.32	0.58	JVI-H	NR
Ratio	114	114		% Rank	93%	0%	0%	49%	10%	47%	8%	JVI-C	117

NOTES:



LOT #	Bull Name	IBE Reg #	DOB	Sire Line	Sire Name
37	Ideal Rito 9785	67809	03/30/2019	Rito	Ideal 4134 of Res Lady

BW	Adj WW	Adj YW	ADG		BW	WW	YW	SC	Milk	IMF	REA	Selection Indexes		
97	788	1236	2.79		IBE EPDs	4.1	66	114	-0.48	23	0.09	0.57	JVI-H	NR
Ratio	143	107			% Rank	88%	3%	5%	94%	58%	89%	9%	JVI-C	103

NOTES: The first of two 1/2 brother bulls. Their sire , Ideal 4134 is an impressive growth bull that has been used in A.I. and in our embryo transfer program.

LOT #	Bull Name	IBE Reg #	DOB	Sire Line	Sire Name
38	Ideal Rito 9767	67754	03/23/2019	Rito	Ideal 4134 of Res Lady

BW	Adj WW	Adj YW	ADG		BW	WW	YW	SC	Milk	IMF	REA	Selection Indexes		
90	567	1230	4.14		IBE EPDs	1.8	48	92	0.44	21	0.02	0.56	JVI-H	NR
Ratio	103	107			% Rank	48%	50%	41%	50%	76%	95%	10%	JVI-C	98

NOTES: The second of two 1/2 brother bulls. Their sire , Ideal 4134 is an impressive growth bull that has been used in A.I. and in our embryo transfer program.

LOT #	Bull Name	IBE Reg #	DOB	Sire Line	Sire Name
39	Ideal Rito 9759	67793	03/21/2019	Rito	Ideal 5156 of RES Marjorie

BW	Adj WW	Adj YW	ADG		BW	WW	YW	SC	Milk	IMF	REA	Selection Indexes		
88	539	1309	4.81		IBE EPDs	0.8	44	80	1.03	24	0.29	0.66	JVI-H	NR
Ratio	97	113			% Rank	28%	63%	72%	16%	52%	55%	3%	JVI-C	106

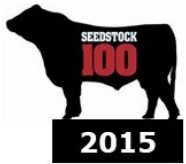
NOTES: Gained over 4.75 lbs per day on test and recorded a Yearling Weight over 1,300 lbs.



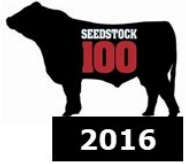


Jorgensen Land & Cattle

7 YEARS AND COUNTING



2015



2016



2017



2018



2019



2020



2021

For the seventh consecutive year, Jorgensen Land & Cattle was named the nation's largest supplier of beef bulls according to **BEEF Magazine** & the 2021 **BEEF Seedstock 100 List**.

Jorgensen Land & Cattle earned their reputation as "The Source" for foundation genetics – the kind of genetics that you use to build a cow herd. We earned that reputation by consistently selecting our breeding stock based on –in this order– reproduction ability, fast growth, and a desirable carcass. Those three factors have been foremost in our breeding & selection criteria throughout our past 60+ years. Consistent testing, systematic selection, and discipline, generation after generation, have built our foundation breeding program. Our breeding program creates bulls that produce uniformity in the calf crops of our customers.

As you examine our catalog, be sure to notice the generations of consistent performance that have been stacked on top of each other.

We are **America's #1 Choice for Bulls** because we do the right things and we do them consistently – generation after generation after generation.

A Breeding Program at Work



Progeny Ratios

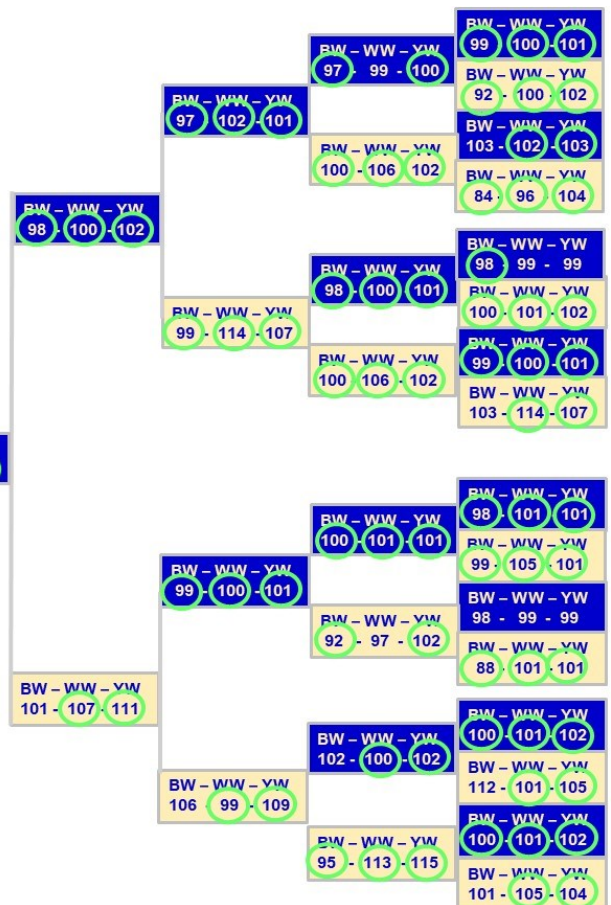
BW - WW - YW
98 - 101 - 102

Encore Produces Like He Was Bred to Produce



Jorgensen Land & Cattle

Semen Available





LOT #	Bull Name	AAA Reg #	DOB	Sire Line	Sire Name
41	Ideal 9563 Eldorado of 6833	19624562	03/07/2019	Eldorado	Ideal 6833 of 3444 Marjorie

BW	Adj WW	Adj YW	ADG		BW	WW	YW	SC	Milk	IMF	REA	Selection Indexes	
88	609	1288	4.25	IBE EPDs	1.5	53	101	1.31	32	0.46	0.35	JVI-H	NR
Ratio	106	114		% Rank	41%	32%	20%	7%	6%	15%	50%	JVI-C	113

NOTES: Gained 4.25 lbs per day on test and ranks in the Top 15% for IMF; his calves should Gain & Grade

LOT #	Bull Name	AAA Reg #	DOB	Sire Line	Sire Name
42	Ideal 9570 Eldorado of 5818	19624569	03/11/2019	Eldorado	Ideal 5818 of 3584 Jilt

BW	Adj WW	Adj YW	ADG		BW	WW	YW	SC	Milk	IMF	REA	Selection Indexes	
88	555	1185	3.94	IBE EPDs	0.7	44	76	1.09	27	0.48	0.08	JVI-H	NR
Ratio	96	104		% Rank	26%	64%	81%	14%	27%	11%	97%	JVI-C	103

NOTES: Registered Angus bull with Top 11% IMF

LOT #	Bull Name	IBE Reg #	DOB	Sire Line	Sire Name
43	Ideal Eldorado 9Y56	70386	03/20/2019	Eldorado	Ideal 6740 of 9524 Ella

BW	Adj WW	Adj YW	ADG		BW	WW	YW	SC	Milk	IMF	REA	Selection Indexes	
90	641	1233	3.70	IBE EPDs	3.5	67	122	0.95	27	0.36	0.31	JVI-H	NR
Ratio	114	108		% Rank	80%	3%	2%	20%	27%	37%	62%	JVI-C	118

NOTES:

LOT #	Bull Name	IBE Reg #	DOB	Sire Line	Sire Name
44	Ideal Eldorado 9D25	69530	04/01/2019	Eldorado	Ideal 3634 of 9524 Betty

BW	Adj WW	Adj YW	ADG		BW	WW	YW	SC	Milk	IMF	REA	Selection Indexes	
83	595	1413	5.11	IBE EPDs	2.6	64	110	0.92	35	0.29	0.35	JVI-H	NR
Ratio	110	122		% Rank	65%	5%	8%	21%	2%	55%	51%	JVI-C	113

NOTES: 9D25 gained over 5 lbs per day on test and recorded a Yearling Weight over 1,400 lbs. This is a GROWTH bull

LOT #	Bull Name			IBE Reg #	DOB	Sire Line	Sire Name							
45	Ideal Eldorado 9P98			70138	04/04/2019	Eldorado	Ideal Encore of 9524 Lady							
BW	Adj WW	Adj YW	ADG		BW	WW	YW	SC	Milk	IMF	REA	Selection Indexes		
95	645	1176	3.32		IBE EPDs	0.1	45	98	0.72	29	0.59	0.26	JVI-H	NR
Ratio	109	109			% Rank	18%	59%	26%	32%	16%	3%	75%	JVI-C	115

NOTES: Top 3% IMF

LOT #	Bull Name			IBE Reg #	DOB	Sire Line	Sire Name							
46	Ideal Eldorado 9J63			69098	03/11/2019	Eldorado	Ideal 3585 of 9524 Blckbrd							
BW	Adj WW	Adj YW	ADG		BW	WW	YW	SC	Milk	IMF	REA	Selection Indexes		
100	674	1350	4.22		IBE EPDs	2.9	56	97	0.49	33	0.35	0.56	JVI-H	NR
Ratio	112	111			% Rank	70%	18%	28%	46%	4%	39%	10%	JVI-C	103

NOTES: Gained over 4 lbs per day on test

LOT #	Bull Name			IBE Reg #	DOB	Sire Line	Sire Name							
47	Ideal Eldorado 9F56			70256	04/03/2019	Eldorado	Ideal 6747 of 9524 Marjorie							
BW	Adj WW	Adj YW	ADG		BW	WW	YW	SC	Milk	IMF	REA	Selection Indexes		
88	637	1181	3.40		IBE EPDs	3.1	53	89	1.17	28	0.20	0.33	JVI-H	NR
Ratio	100	104			% Rank	73%	28%	48%	11%	23%	75%	56%	JVI-C	98

NOTES:

LOT #	Bull Name			IBE Reg #	DOB	Sire Line	Sire Name							
49	Ideal Eldorado 9J99			69149	03/11/2019	Eldorado	Ideal 3596 of 9524 Lady							
BW	Adj WW	Adj YW	ADG		BW	WW	YW	SC	Milk	IMF	REA	Selection Indexes		
120	615	1207	3.70		IBE EPDs	5.2	55	89	0.30	23	0.27	0.42	JVI-H	NR
Ratio	102	100			% Rank	95%	24%	48%	60%	59%	60%	33%	JVI-C	87

NOTES:





LOT #	Bull Name			IBE Reg #	DOB	Sire Line	Sire Name						
50	Ideal Traveler 9K38			69303	03/29/2019	Traveler	Ideal 7265 of 1168 Jilt						
BW	Adj WW	Adj YW	ADG		BW	WW	YW	SC	Milk	IMF	REA	Selection Indexes	
75	570	1303	4.58	IBE EPDs	2.7	58	96	0.73	20	0.39	0.34	JVI-H	NR
Ratio	104	116		% Rank	66%	14%	30%	31%	82%	29%	51%	JVI-C	111

NOTES: Gained over 4.5 lbs per day on test and is Top 30% IMF. Calves should Gain & Grade

LOT #	Bull Name			IBE Reg #	DOB	Sire Line	Sire Name						
51	Ideal Traveler 9A75			68993	03/14/2019	Traveler	Ideal 1779 of 7773 Irene						
BW	Adj WW	Adj YW	ADG		BW	WW	YW	SC	Milk	IMF	REA	Selection Indexes	
87	724	1489	4.78	IBE EPDs	2.2	54	93	0.30	24	0.20	0.34	JVI-H	NR
Ratio	120	123		% Rank	---	---	---	---	---	---	---	JVI-C	102

NOTES: Recorded a Yearling Weight of almost 1,500 lbs

LOT #	Bull Name			IBE Reg #	DOB	Sire Line	Sire Name						
52	Ideal Traveler 9Y45			70346	03/27/2019	Traveler	Traveler 8i2						
BW	Adj WW	Adj YW	ADG		BW	WW	YW	SC	Milk	IMF	REA	Selection Indexes	
88	627	1217	3.69	IBE EPDs	3.5	58	97	-0.63	28	0.36	0.37	JVI-H	NR
Ratio	111	107		% Rank	79%	14%	28%	97%	24%	36%	43%	JVI-C	98

NOTES:

LOT #	Bull Name			IBE Reg #	DOB	Sire Line	Sire Name						
53	Ideal Traveler 9J12			69031	03/05/2019	Traveler	Ideal 7336 of 4355 3170						
BW	Adj WW	Adj YW	ADG		BW	WW	YW	SC	Milk	IMF	REA	Selection Indexes	
89	565	1195	3.94	IBE EPDs	2.6	47	119	-0.22	21	0.07	0.14	JVI-H	NR
Ratio	94	99		% Rank	65%	55%	3%	87%	74%	91%	93%	JVI-C	97

NOTES:

LOT #	Bull Name	AAA Reg #	DOB	Sire Line	Sire Name
54	Ideal 9632 Traveler of 4223	19654480	02/20/2019	Traveler	Ideal 4223 of 1168 Blkbrd

BW	Adj WW	Adj YW	ADG		BW	WW	YW	SC	Milk	IMF	REA	Selection Indexes		
69	519	1168	4.06		IBE EPDs	1.2	46	71	0.13	25	0.01	0.35	JVI-H	94
Ratio	90	102			% Rank	36%	58%	89%	71%	46%	95%	51%	JVI-C	91

NOTES: Gained over 4 lbs per day on test

LOT #	Bull Name	IBE Reg #	DOB	Sire Line	Sire Name
55	Ideal Traveler 9M64	68059	05/23/2019	Traveler	Ideal 4334 of Guru 427 3458

BW	Adj WW	Adj YW	ADG		BW	WW	YW	SC	Milk	IMF	REA	Selection Indexes		
102	662	1083	2.63		IBE EPDs	4.9	63	92	0.48	25	0.27	0.51	JVI-H	NR
Ratio	110	95			% Rank	94%	6%	40%	47%	42%	59%	17%	JVI-C	98

NOTES: Good Ribeye bull, here

LOT #	Bull Name	IBE Reg #	DOB	Sire Line	Sire Name
56	Ideal Traveler 9J04	68945	03/11/2019	Traveler	Ideal 4398 of 8345 Blackcap

BW	Adj WW	Adj YW	ADG		BW	WW	YW	SC	Milk	IMF	REA	Selection Indexes		
89	606	1238	3.95		IBE EPDs	2.6	44	81	0.67	18	0.25	0.35	JVI-H	NR
Ratio	101	102			% Rank	---	---	---	---	---	---	---	JVI-C	94

NOTES:

LOT #	Bull Name	IBE Reg #	DOB	Sire Line	Sire Name
57	Ideal Traveler 9W26	70451	04/15/2019	Traveler	Traveler 7R22

BW	Adj WW	Adj YW	ADG		BW	WW	YW	SC	Milk	IMF	REA	Selection Indexes		
83	520	1147	3.92		IBE EPDs	2.4	46	83	0.88	26	0.13	0.27	JVI-H	92
Ratio	91	100			% Rank	59%	57%	65%	23%	36%	85%	72%	JVI-C	93

NOTES:

LOT #	Bull Name	IBE Reg #	DOB	Sire Line	Sire Name
59	Ideal Traveler 9V14	69463	03/01/2019	Traveler	Ideal 7247 of 1168 Marjorie

BW	Adj WW	Adj YW	ADG		BW	WW	YW	SC	Milk	IMF	REA	Selection Indexes		
85	491	1024	3.34		IBE EPDs	2.1	43	72	0.32	21	0.22	0.43	JVI-H	107
Ratio	90	91			% Rank	54%	69%	87%	59%	74%	70%	29%	JVI-C	108

NOTES:

LOT #	Bull Name	IBE Reg #	DOB	Sire Line	Sire Name
60	Ideal Traveler 9A72	69009	02/12/2019	Traveler	Connealy Stingray 9618

BW	Adj WW	Adj YW	ADG		BW	WW	YW	SC	Milk	IMF	REA	Selection Indexes		
85	547	1239	4.32		IBE EPDs	-1.4	16	55	0.23	18	0.23	0.34	JVI-H	98
Ratio	91	102			% Rank	---	---	---	---	---	---	---	JVI-C	86

NOTES: Low BW and gained over 4 lbs per day on test

LOT #	Bull Name	IBE Reg #	DOB	Sire Line	Sire Name
61	Ideal Traveler 9753	67715	03/01/2019	Traveler	Connealy Stingray 9618

BW	Adj WW	Adj YW	ADG		BW	WW	YW	SC	Milk	IMF	REA	Selection Indexes		
85	589	1207	3.86		IBE EPDs	-0.1	26	68	-0.05	23	0.11	0.35	JVI-H	92
Ratio	106	105			% Rank	16%	95%	92%	80%	60%	87%	49%	JVI-C	83

NOTES:

LOT #	Bull Name	IBE Reg #	DOB	Sire Line	Sire Name
62	Ideal Traveler 9J26	69208	03/09/2019	Traveler	Traveler AL04

BW	Adj WW	Adj YW	ADG		BW	WW	YW	SC	Milk	IMF	REA	Selection Indexes		
93	643	1174	3.32		IBE EPDs	2.6	42	65	0.33	22	0.14	0.53	JVI-H	NR
Ratio	107	97			% Rank	64%	71%	94%	58%	70%	83%	13%	JVI-C	83

NOTES: Good Ribeye bull

LOT #	Bull Name	IBE Reg #	DOB	Sire Line	Sire Name
63	Ideal Traveler 9K19	69464	04/10/2019	Traveler	Ideal 7845 of 3444 Marjorie

BW	Adj WW	Adj YW	ADG		BW	WW	YW	SC	Milk	IMF	REA	Selection Indexes		
75	552	1176	3.90		IBE EPDs	2.3	42	83	-0.10	29	0.11	0.22	JVI-H	85
Ratio	101	105			% Rank	58%	71%	64%	83%	20%	87%	84%	JVI-C	83

NOTES:

LOT #	Bull Name	IBE Reg #	DOB	Sire Line	Sire Name
64	Ideal Traveler 9Y01	70335	03/14/2019	Traveler	Coleman Emblazon 0116

BW	Adj WW	Adj YW	ADG		BW	WW	YW	SC	Milk	IMF	REA	Selection Indexes		
70	514	1090	3.60		IBE EPDs	-0.1	32	70	0.37	24	0.32	0.24	JVI-H	100
Ratio	91	95			% Rank	16%	90%	89%	55%	53%	49%	80%	JVI-C	93

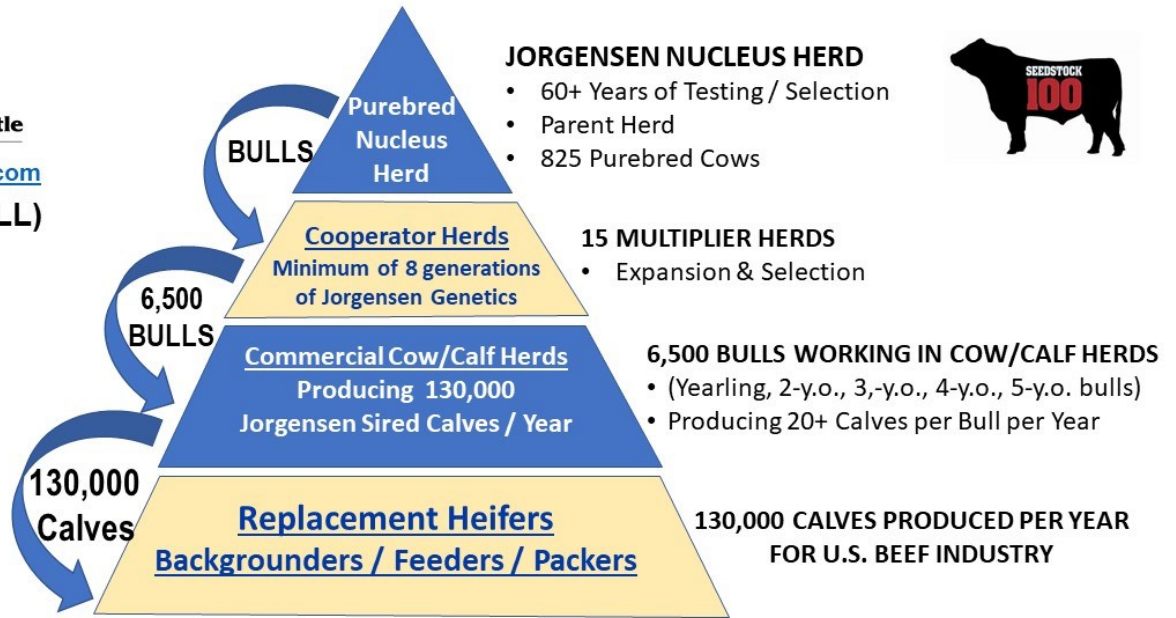
NOTES:



Jorgensen Land & Cattle
PARTNERSHIP

www.jorgensenfarms.com

800-548 2855 (BULL)



Each year, Jorgensen bulls sire roughly 130,000 calves across the U.S., calves that build beef cow herds and calves that produce healthy, delicious steaks, roasts, and burgers. That level of influence is something we take seriously, and that is why we never stop searching for ways to improve our genetics and their positive impacts on your cattle operation and the U.S. Beef Industry.



LOT #	Bull Name	IBE Reg #	DOB	Sire Line	Sire Name
65	Ideal Emulous 9J55	69108	03/05/2019	Emulous	Ideal 5601 of 1281 Blkbrd

BW	Adj WW	Adj YW	ADG		BW	WW	YW	SC	Milk	IMF	REA	Selection Indexes		
95	620	1155	3.34		IBE EPDs	1.8	46	117	-0.55	24	0.33	0.32	JVI-H	NR
Ratio	103	95			% Rank	48%	59%	3%	96%	51%	45%	59%	JVI-C	103

NOTES: This bull should put pounds on a calf crop; Top 3% for Yearling Weight

LOT #	Bull Name	IBE Reg #	DOB	Sire Line	Sire Name
66	Ideal Emulous 9A56	69152	03/18/2019	Emulous	Ideal 5538 of 1281 Marjorie

BW	Adj WW	Adj YW	ADG		BW	WW	YW	SC	Milk	IMF	REA	Selection Indexes		
85	643	1191	3.42		IBE EPDs	3.4	53	92	0.52	16	0.42	0.32	JVI-H	NR
Ratio	107	98			% Rank	78%	31%	40%	45%	96%	22%	60%	JVI-C	103

NOTES: Top 25% for IMF

LOT #	Bull Name	IBE Reg #	DOB	Sire Line	Sire Name
67	Ideal Emulous 9R41	67977	04/09/2019	Emulous	Ideal 6629 of 1281 Marjorie

BW	Adj WW	Adj YW	ADG		BW	WW	YW	SC	Milk	IMF	REA	Selection Indexes		
80	676	1254	3.61		IBE EPDs	2.6	59	92	-0.48	24	0.28	0.33	JVI-H	NR
Ratio	119	111			% Rank	63%	13%	40%	94%	50%	58%	56%	JVI-C	102

NOTES: Heavy calves at Weaning—Top 13% for Weaning Weight

LOT #	Bull Name	IBE Reg #	DOB	Sire Line	Sire Name
68	Ideal Emulous 9F76	70482	04/02/2019	Emulous	Ideal 6648 of 1281 Blackcap

BW	Adj WW	Adj YW	ADG		BW	WW	YW	SC	Milk	IMF	REA	Selection Indexes		
90	615	1213	3.74		IBE EPDs	3.0	43	80	0.85	19	0.38	0.31	JVI-H	NR
Ratio	97	107			% Rank	---	---	---	---	---	---	---	JVI-C	94

NOTES:

LOT #	Bull Name	IBE Reg #	DOB	Sire Line	Sire Name
69	Ideal Emulous 9P67	70081	03/16/2019	Emulous	Ideal 3270 of 1281 Jilt

BW	Adj WW	Adj YW	ADG		BW	WW	YW	SC	Milk	IMF	REA	Selection Indexes		
90	606	1132	3.29		IBE EPDs	3.0	47	82	0.66	19	0.17	0.33	JVI-H	NR
Ratio	102	102			% Rank	71%	52%	68%	35%	91%	80%	54%	JVI-C	93

NOTES:

LOT #	Bull Name			AAA Reg #	DOB	Sire Line	Sire Name							
70	Ideal 9871 Emulation of 6030			19624617	03/09/2019	Emulation	Ideal 6030 of 3031 Irene							
BW	Adj WW	Adj YW	ADG		BW	WW	YW	SC	Milk	IMF	REA	Selection Indexes		
96	687	1308	3.88		4.0	63	107	1.04	31	0.45	0.14	JVI-H	NR	
Ratio	121	116			% Rank	86%	6%	11%	16%	9%	16%	94%	JVI-C	108

NOTES: Top 13% for IMF, Top 11% for YW;, Top 6% for WW. Whether you sell calves at Weaning or as Yearlings, this bulls calves should Gain. Feeders should like them too, because they should Grade very well

LOT #	Bull Name			IBE Reg #	DOB	Sire Line	Sire Name							
71	Ideal Emulation 9R24			67926	03/18/2019	Emulation	Executive 3U2							
BW	Adj WW	Adj YW	ADG		BW	WW	YW	SC	Milk	IMF	REA	Selection Indexes		
79	559	1032	2.96		0.7	29	56	0.05	25	0.44	0.28	JVI-H	88	
Ratio	98	92			% Rank	27%	93%	98%	75%	48%	17%	70%	JVI-C	82

NOTES: Top 17% for IMF

LOT #	Bull Name			IBE Reg #	DOB	Sire Line	Sire Name							
72	Ideal Dakota Territory 9W79			70409	05/10/2019	Dakota Territory	Ideal P72							
BW	Adj WW	Adj YW	ADG		BW	WW	YW	SC	Milk	IMF	REA	Selection Indexes		
91	626	1214	3.68		3.2	60	111	1.49	31	0.37	0.29	JVI-H	NR	
Ratio	109	106			% Rank	75%	11%	7%	4%	9%	35%	69%	JVI-C	113

NOTES: Calves should be heavy at Weaning, grow well to Yearling, and Grade well on the rail

LOT #	Bull Name			IBE Reg #	DOB	Sire Line	Sire Name							
73	Ideal Dakota Territory 9M33			68013	03/31/2019	Dakota Territory								
BW	Adj WW	Adj YW	ADG		BW	WW	YW	SC	Milk	IMF	REA	Selection Indexes		
92	657	1111	2.84		4.7	63	103	1.42	23	0.20	0.28	JVI-H	NR	
Ratio	109	97			% Rank	93%	6%	17%	5%	61%	74%	71%	JVI-C	104

NOTES:

LOT #	Bull Name			IBE Reg #	DOB	Sire Line	Sire Name							
74	Ideal Dakota Territory 9J68			69180	03/09/2019	Dakota Territory								
BW	Adj WW	Adj YW	ADG		BW	WW	YW	SC	Milk	IMF	REA	Selection Indexes		
102	733	1386	4.08		4.0	54	91	1.86	29	0.18	0.28	JVI-H	NR	
Ratio	122	114			% Rank	86%	25%	43%	1%	17%	78%	70%	JVI-C	97

NOTES: Gained over 4 lbs per day on test

LOT #	Bull Name	IBE Reg #	DOB	Sire Line	Sire Name
75	Ideal Dakota Territory 9W70	70443	05/01/2019	Dakota Territory	Ideal P68

BW	Adj WW	Adj YW	ADG		BW	WW	YW	SC	Milk	IMF	REA	Selection Indexes		
90	632	1263	3.94		IBE EPDs	1.2	44	85	2.04	30	0.21	0.29	JVI-H	NR
Ratio	110	110			% Rank	34%	63%	59%	0%	12%	73%	68%	JVI-C	104

NOTES:

LOT #	Bull Name	IBE Reg #	DOB	Sire Line	Sire Name
76	Ideal Dakota Territory 9P37	70159	03/25/2019	Dakota Territory	

BW	Adj WW	Adj YW	ADG		BW	WW	YW	SC	Milk	IMF	REA	Selection Indexes		
85	617	1144	3.30		IBE EPDs	4.8	58	92	1.09	19	0.44	0.37	JVI-H	NR
Ratio	104	104			% Rank	93%	14%	41%	14%	91%	18%	44%	JVI-C	103

NOTES: Calves should be heavy at Weaning & should Grade well on the rail - Top 17% IMF

LOT #	Bull Name	IBE Reg #	DOB	Sire Line	Sire Name
77	Ideal Dakota Territory 9W29	70437	05/04/2019	Dakota Territory	Ideal P72

BW	Adj WW	Adj YW	ADG		BW	WW	YW	SC	Milk	IMF	REA	Selection Indexes		
84	585	1120	3.34		IBE EPDs	2.6	54	85	0.80	25	0.32	0.22	JVI-H	NR
Ratio	102	98			% Rank	64%	27%	59%	27%	44%	47%	84%	JVI-C	100

NOTES:

LOT #	Bull Name	IBE Reg #	DOB	Sire Line	Sire Name
78	Ideal Dakota Territory 9J39	69091	03/12/2019	Dakota Territory	

BW	Adj WW	Adj YW	ADG		BW	WW	YW	SC	Milk	IMF	REA	Selection Indexes		
95	668	1409	4.64		IBE EPDs	3.9	56	98	0.72	21	0.34	0.14	JVI-H	NR
Ratio	111	116			% Rank	86%	21%	27%	32%	75%	43%	94%	JVI-C	100

NOTES: Gained over 4.6 lbs per day on test

LOT #	Bull Name	IBE Reg #	DOB	Sire Line	Sire Name
79	Ideal Dakota Territory 9R78	68190	03/26/2019	Dakota Territory	

BW	Adj WW	Adj YW	ADG		BW	WW	YW	SC	Milk	IMF	REA	Selection Indexes		
84	561	1119	3.49		IBE EPDs	3.4	50	83	1.20	18	0.31	0.15	JVI-H	NR
Ratio	99	99			% Rank	78%	41%	65%	10%	92%	50%	92%	JVI-C	98

NOTES:

LOT #	Bull Name			IBE Reg #	DOB	Sire Line	Sire Name						
80	Ideal Dakota Territory 9J81			69143	03/17/2019	Dakota Territory							
BW	Adj WW	Adj YW	ADG		BW	WW	YW	SC	Milk	IMF	REA	Selection Indexes	
102	670	1248	3.61	IBE EPDs	5.4	60	100	1.17	28	0.28	0.33	JVI-H	NR
Ratio	111	103		% Rank	96%	10%	23%	11%	21%	57%	56%	JVI-C	95

NOTES: Calves should grow well

LOT #	Bull Name			IBE Reg #	DOB	Sire Line	Sire Name						
81	Ideal Dakota Territory 9M55			68016	04/15/2019	Dakota Territory							
BW	Adj WW	Adj YW	ADG		BW	WW	YW	SC	Milk	IMF	REA	Selection Indexes	
95	638	1201	3.52	IBE EPDs	3.9	54	91	0.15	24	0.31	0.38	JVI-H	NR
Ratio	106	105		% Rank	85%	27%	43%	70%	51%	51%	41%	JVI-C	94

NOTES:

LOT #	Bull Name			IBE Reg #	DOB	Sire Line	Sire Name						
82	Ideal Dakota Territory 9Y61			70359	03/22/2019	Dakota Territory							
BW	Adj WW	Adj YW	ADG		BW	WW	YW	SC	Milk	IMF	REA	Selection Indexes	
88	570	1152	3.64	IBE EPDs	2.4	43	85	1.01	29	0.33	0.29	JVI-H	NR
Ratio	101	101		% Rank	59%	66%	60%	17%	19%	46%	68%	JVI-C	94

NOTES:

LOT #	Bull Name			IBE Reg #	DOB	Sire Line	Sire Name						
83	Ideal Dakota Territory 9M22			68044	04/12/2019	Dakota Territory							
BW	Adj WW	Adj YW	ADG		BW	WW	YW	SC	Milk	IMF	REA	Selection Indexes	
89	640	1249	3.81	IBE EPDs	4.2	56	91	0.72	23	0.19	0.23	JVI-H	NR
Ratio	106	110		% Rank	89%	21%	42%	32%	62%	76%	82%	JVI-C	94

NOTES:

LOT #	Bull Name			IBE Reg #	DOB	Sire Line	Sire Name						
84	Ideal Dakota Territory 9M38			68018	05/07/2019	Dakota Territory							
BW	Adj WW	Adj YW	ADG		BW	WW	YW	SC	Milk	IMF	REA	Selection Indexes	
92	607	1060	2.83	IBE EPDs	3.3	49	88	1.27	32	0.27	0.24	JVI-H	NR
Ratio	101	93		% Rank	77%	44%	50%	8%	7%	60%	79%	JVI-C	93

NOTES:

LOT #	Bull Name	IBE Reg #	DOB	Sire Line	Sire Name
85	Ideal Dakota Territory 9M69	68098	04/10/2019	Dakota Territory	

BW	Adj WW	Adj YW	ADG		BW	WW	YW	SC	Milk	IMF	REA	Selection Indexes		
102	580	1216	3.97		IBE EPDs	4.9	55	93	1.46	19	0.04	0.38	JVI-H	NR
Ratio	96	107			% Rank	94%	24%	38%	4%	91%	94%	40%	JVI-C	92

NOTES:

LOT #	Bull Name	IBE Reg #	DOB	Sire Line	Sire Name
87	Ideal Emulation 9R22	67838	03/16/2019	Emulation	Sinclair Sun Dial 4TL8

BW	Adj WW	Adj YW	ADG		BW	WW	YW	SC	Milk	IMF	REA	Selection Indexes		
79	610	1316	4.42		IBE EPDs	2.3	58	99	1.72	24	0.31	0.33	JVI-H	111
Ratio	107	117			% Rank	59%	14%	24%	2%	53%	50%	55%	JVI-C	115

NOTES: Should produce a calf crop that is heavy at Weaning & grow well

LOT #	Bull Name	IBE Reg #	DOB	Sire Line	Sire Name
88	Ideal Rito 9S62	68261	03/22/2019	Rito	Ideal 6123 of RES Jilt

BW	Adj WW	Adj YW	ADG		BW	WW	YW	SC	Milk	IMF	REA	Selection Indexes		
99	684	1253	3.56		IBE EPDs	5.6	62	114	0.78	29	0.37	0.24	JVI-H	NR
Ratio	120	111			% Rank	97%	7%	5%	28%	20%	34%	81%	JVI-C	100

NOTES: Calves should be heavy at Weaning, gain well in the feedlot, and Grade well on the Rail



LOT #	Bull Name	IBE Reg #	DOB	Sire Line	Sire Name
89	Ideal Traveler 9Q18	69120	02/10/2019	Traveler	Connealy Comrade 1385

BW	Adj WW	Adj YW	ADG		BW	WW	YW	SC	Milk	IMF	REA	Selection Indexes		
73	600	1536	5.84		IBE EPDs	-2.9	29	68	-0.30	25	0.35	0.43	JVI-H	117
Ratio	100	127			% Rank	1%	93%	91%	90%	44%	39%	30%	JVI-C	104

NOTES: Gained almost 6 lbs per day on Test. Good Ribeye bull

LOT #	Bull Name	IBE Reg #	DOB	Sire Line	Sire Name
90	Ideal Traveler 9Z28	67457	01/24/2019	Traveler	Traveler 6Z31

BW	Adj WW	Adj YW	ADG		BW	WW	YW	SC	Milk	IMF	REA	Selection Indexes		
75	571	1050	3.00		IBE EPDs	1.4	51	81	0.39	25	0.43	0.36	JVI-H	106
Ratio	104	93			% Rank	39%	37%	69%	54%	48%	20%	48%	JVI-C	106

NOTES: Top 20% IMF

LOT #	Bull Name	IBE Reg #	DOB	Sire Line	Sire Name
91	Ideal Emulous 9J92	69179	03/27/2019	Emulous	Ideal 3270 of 1281 Jilt

BW	Adj WW	Adj YW	ADG		BW	WW	YW	SC	Milk	IMF	REA	Selection Indexes		
108	731	1263	3.33		IBE EPDs	6.5	78	125	0.76	29	0.06	0.23	JVI-H	NR
Ratio	121	104			% Rank	99%	0%	1%	29%	17%	92%	82%	JVI-C	103

NOTES: Big YW EPD bull, here; Ranks in Top 1%

LOT #	Bull Name	IBE Reg #	DOB	Sire Line	Sire Name
93	Ideal Emulous 9J51	69245	03/16/2019	Emulous	Ideal 5538 of 1281 Marjorie

BW	Adj WW	Adj YW	ADG		BW	WW	YW	SC	Milk	IMF	REA	Selection Indexes		
95	637	1275	3.99		IBE EPDs	3.5	44	63	1.57	17	0.31	0.29	JVI-H	NR
Ratio	106	105			% Rank	81%	63%	96%	3%	94%	51%	67%	JVI-C	88

NOTES:

LOT #	Bull Name	IBE Reg #	DOB	Sire Line	Sire Name
94	Ideal Emulous 9L04	68033	04/03/2019	Emulous	Ideal 5609 of 1281 Marjorie

BW	Adj WW	Adj YW	ADG		BW	WW	YW	SC	Milk	IMF	REA	Selection Indexes		
68	554	1059	3.16		IBE EPDs	0.3	41	82	0.25	24	0.42	0.59	JVI-H	109
Ratio	92	93			% Rank	21%	73%	66%	64%	55%	22%	7%	JVI-C	106

NOTES:

LOT #	Bull Name	IBE Reg #	DOB	Sire Line	Sire Name
95	Ideal Dakota Territory 9A97	69223	03/11/2019	Dakota Territory	

BW	Adj WW	Adj YW	ADG		BW	WW	YW	SC	Milk	IMF	REA	Selection Indexes		
89	575	1281	4.41		IBE EPDs	4.3	52	99	0.02	17	0.26	0.36	JVI-H	NR
Ratio	95	106			% Rank	89%	33%	23%	76%	95%	61%	46%	JVI-C	95

NOTES: Good YW bull

LOT #	Bull Name	IBE Reg #	DOB	Sire Line	Sire Name
96	Ideal Dakota Territory 9M55	70130	03/20/2019	Dakota Territory	

BW	Adj WW	Adj YW	ADG		BW	WW	YW	SC	Milk	IMF	REA	Selection Indexes		
90	562	1082	3.25		IBE EPDs	3.5	47	97	0.97	22	0.06	0.58	JVI-H	NR
Ratio	95	95			% Rank	80%	55%	29%	19%	66%	92%	9%	JVI-C	93

NOTES:

LOT #	Bull Name	IBE Reg #	DOB	Sire Line	Sire Name
97	Ideal Dakota Territory 9M70	68146	03/31/2019	Dakota Territory	

BW	Adj WW	Adj YW	ADG		BW	WW	YW	SC	Milk	IMF	REA	Selection Indexes		
102	706	1482	4.85		IBE EPDs	4.5	65	114	1.02	31	0.48	0.38	JVI-H	NR
Ratio	117	130			% Rank	91%	4%	5%	17%	9%	11%	41%	JVI-C	109

NOTES: Gained 4.85 lbs per day on test; YW of 1,482. His calves should be heavy at Weaning, Yearling, and Grade very well on the rail

LOT #	Bull Name	IBE Reg #	DOB	Sire Line	Sire Name
98	Ideal Dakota Territory 9J65	69203	03/11/2019	Dakota Territory	Ideal B453

BW	Adj WW	Adj YW	ADG		BW	WW	YW	SC	Milk	IMF	REA	Selection Indexes		
102	652	1324	4.20		IBE EPDs	3.4	56	106	0.77	21	0.25	0.54	JVI-H	NR
Ratio	108	109			% Rank	79%	20%	12%	29%	78%	64%	12%	JVI-C	107

NOTES:

LOT #	Bull Name	IBE Reg #	DOB	Sire Line	Sire Name
99	Ideal Dakota Territory 9M58	68145	04/08/2019	Dakota Territory	

BW	Adj WW	Adj YW	ADG		BW	WW	YW	SC	Milk	IMF	REA	Selection Indexes		
99	605	1095	3.07		IBE EPDs	5.9	56	94	0.86	17	0.33	0.29	JVI-H	NR
Ratio	100	96			% Rank	98%	20%	36%	24%	96%	46%	69%	JVI-C	92

NOTES:

LOT #	Bull Name	IBE Reg #	DOB	Sire Line	Sire Name
101	Ideal Dakota Territory 9A26	69218	02/10/2019	Dakota Territory	

BW	Adj WW	Adj YW	ADG		BW	WW	YW	SC	Milk	IMF	REA	Selection Indexes		
80	524	1159	3.97		IBE EPDs	-1.9	13	47	-0.14	21	0.33	0.45	JVI-H	97
Ratio	87	96			% Rank	4%	100%	99%	84%	77%	47%	26%	JVI-C	83

NOTES:

LOT #	Bull Name	IBE Reg #	DOB	Sire Line	Sire Name
102	Ideal Dakota Territory 9704	67730	02/15/2019	Dakota Territory	

BW	Adj WW	Adj YW	ADG		BW	WW	YW	SC	Milk	IMF	REA	Selection Indexes		
73	546	1119	3.58		IBE EPDs	-1.4	33	83	-0.10	18	0.34	0.36	JVI-H	116
Ratio	99	97			% Rank	6%	90%	64%	83%	93%	41%	48%	JVI-C	108

NOTES:

LOT #	Bull Name	IBE Reg #	DOB	Sire Line	Sire Name
103	Ideal Dakota Territory 9E08	69405	04/03/2019	Dakota Territory	

BW	Adj WW	Adj YW	ADG		BW	WW	YW	SC	Milk	IMF	REA	Selection Indexes		
69	600	1075	2.97		IBE EPDs	0.6	44	81	0.99	26	0.32	0.40	JVI-H	107
Ratio	94	94			% Rank	25%	66%	69%	18%	39%	49%	36%	JVI-C	104

NOTES:

LOT #	Bull Name	IBE Reg #	DOB	Sire Line	Sire Name
104	Ideal Dakota Territory 9P42	70090	03/30/2019	Dakota Territory	

BW	Adj WW	Adj YW	ADG		BW	WW	YW	SC	Milk	IMF	REA	Selection Indexes		
85	595	1120	3.28		IBE EPDs	1.5	54	91	0.78	19	0.11	0.36	JVI-H	109
Ratio	101	101			% Rank	40%	28%	44%	28%	90%	87%	46%	JVI-C	109

NOTES:

LOT #	Bull Name	IBE Reg #	DOB	Sire Line	Sire Name
105	Ideal Dakota Territory 9Q25	67899	01/30/2019	Dakota Territory	

BW	Adj WW	Adj YW	ADG		BW	WW	YW	SC	Milk	IMF	REA	Selection Indexes		
63	536	1083	3.42		IBE EPDs	-2.4	31	73	0.67	20	0.64	0.56	JVI-H	127
Ratio	94	96			% Rank	2%	91%	86%	34%	82%	2%	10%	JVI-C	117

NOTES:

LOT #	Bull Name			IBE Reg #	DOB	Sire Line	Sire Name						
106	Ideal Dakota Territory 9R04			68195	02/03/2019	Dakota Territory							
BW	Adj WW	Adj YW	ADG		BW	WW	YW	SC	Milk	IMF	REA	Selection Indexes	
74	555	1027	2.95	IBE EPDs	-0.4	34	71	0.16	29	0.48	0.47	JVI-H	104
Ratio	98	91		% Rank	13%	89%	89%	69%	16%	11%	22%	JVI-C	97

NOTES:

LOT #	Bull Name			IBE Reg #	DOB	Sire Line	Sire Name						
107	Ideal Dakota Territory 9R21			68234	01/27/2019	Dakota Territory							
BW	Adj WW	Adj YW	ADG		BW	WW	YW	SC	Milk	IMF	REA	Selection Indexes	
78	547	1216	4.18	IBE EPDs	-3.0	8	38	-0.89	16	0.50	0.33	JVI-H	100
Ratio	96	108		% Rank	1%	100%	100%	99%	97%	10%	55%	JVI-C	82

NOTES: Low BW bull who gained over 4 lbs per day on Test

LOT #	Bull Name			IBE Reg #	DOB	Sire Line	Sire Name						
108	Ideal Dakota Territory 9A09			69141	03/01/2019	Dakota Territory							
BW	Adj WW	Adj YW	ADG		BW	WW	YW	SC	Milk	IMF	REA	Selection Indexes	
77	594	1276	4.26	IBE EPDs	1.9	45	90	0.36	20	0.27	0.45	JVI-H	100
Ratio	99	105		% Rank	49%	62%	45%	56%	81%	60%	26%	JVI-C	100

NOTES: Low BW bull who gained over 4 lbs per day on Test

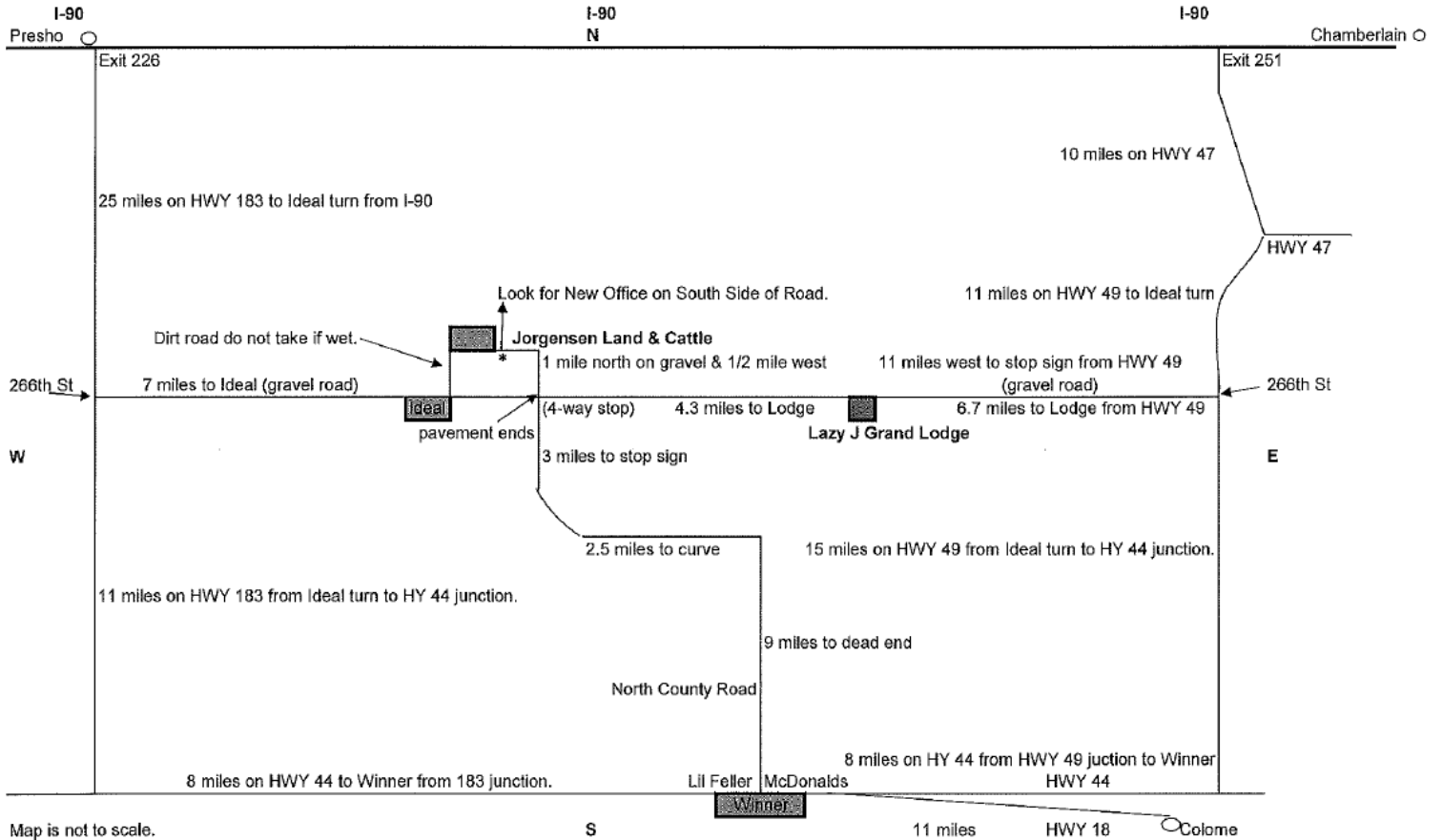
LOT #	Bull Name			IBE Reg #	DOB	Sire Line	Sire Name						
109	Ideal Dakota Territory 9M62			68020	04/21/2019	Dakota Territory							
BW	Adj WW	Adj YW	ADG		BW	WW	YW	SC	Milk	IMF	REA	Selection Indexes	
100	609	1125	3.23	IBE EPDs	6.0	65	113	1.48	22	0.35	0.32	JVI-H	NR
Ratio	101	99		% Rank	98%	4%	6%	4%	68%	39%	58%	JVI-C	105

NOTES:

LOT #	Bull Name			IBE Reg #	DOB	Sire Line	Sire Name						
110	Ideal Dakota Territory 9L73			67987	03/28/2019	Dakota Territory							
BW	Adj WW	Adj YW	ADG		BW	WW	YW	SC	Milk	IMF	REA	Selection Indexes	
83	623	916	1.84	IBE EPDs	1.3	52	92	-0.16	26	0.30	0.37	JVI-H	106
Ratio	103	80		% Rank	36%	34%	41%	85%	38%	54%	45%	JVI-C	104

NOTES:

Directions to Jorgensen Land & Cattle



Watch & bid online for FREE at

DVAuction
Broadcasting Real-Time Auctions

Can't make the sale? Bid from home with DVAuction's "real time" internet Bidding Service

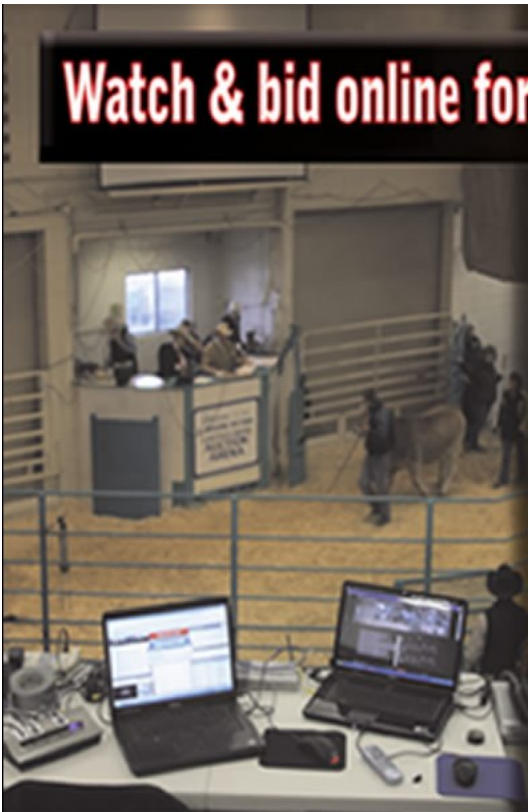
Buying is as easy as 1, 2, 3...

1. Create an account at www.dvauction.com under the "Create New Account" tab
2. Apply for bidding approval by clicking on the "Apply for Bidding" tab at least 24 hours prior to the auction. A DV representative will notify you once you have been approved
3. Tune in for the sale and make your purchases

After the sale, contact the sale manager or owner to arrange transportation and payment. **High Speed Internet** is required for successful bidding.

Proxy Bidding- If you can't make time to watch the sale, register a proxy bid and let our system represent your bid while you're away

Having troubles? During the auction, you can type a message to the operator at any time for assistance. Our full-time support team can also always be reached at (402) 316-5460.



DVAuction
Broadcasting Real-Time Auctions

The Livestock Industry's Leading Online Marketplace!

2021 Fall Pasture Ready SMARTBULLS™ SALE

AT THE FARM IN IDEAL, SD
OCT. 2, 2020 • 6:30 PM CDT

OR ONLINE AT

DVAuction
Broadcasting Real-Time Auctions

31250 265TH STREET • IDEAL, SD 57541
800-548-2855

TRANSPORTATION PROVIDED FROM LODGE TO SALE



Jorgensen Land & Cattle