

# 2022 PASTURE-READY SMARTBULLS® SALE

**BREED  
MORE**

**SMARTBULLS®**

**PAMPER  
LESS**



**Jorgensen Land & Cattle**  
**Friday, Sept. 30, 2022**  
**5:30 Central Time**  
**At the Ranch, Ideal, SD**

**DVAuction**  
Broadcasting Real-Time Auctions



Dear Cattlemen & Cattlewomen,

The popularity of SmartBulls® just keeps growing and we are fast approaching Friday, September 30<sup>th</sup>, 2022, our Annual **Fall Pasture Ready SMARTBULLS® Sale**. All of the bulls in this sale are true Angus bulls, verified by a DNA process patterned after one originated at USDA MARC center. Having an HD50K on file in the Ideal Beef Evaluation also allows us to be able to trace calves to particular Jorgensen bulls for feeder calf marketing programs.

We first began selling **SMARTBULLS®** over 20 years ago and their popularity among cattlemen continues to grow because they have the capacity and age to breed your cows without a bunch of pampering. In addition, cattlemen can breed more cows with fewer bulls than if they use younger bulls.

The **IDEAL BEEF EVALUATION<sup>SM</sup> (IBE<sup>SM</sup>)** increases the genetic predictive power of our **SMARTBULLS®** and **AgBoost®** helps us communicate that data visually to cattlemen. **All EPDs displayed in this catalog are Ideal Beef Evaluation EPDs.** If you would like AAA EPDs on AAA registered bulls, we will be happy to provide them for you.

The **IBE** is a proprietary genetic evaluation that was developed through the cooperative efforts of Jorgensen Land & Cattle and Zoetis. It combines the vast phenotypic dataset (performance, calving, ultrasound, and reproduction) of Jorgensen Land & Cattle, with the genetic and analytical teams of Zoetis — along with their gold standard HD50K genomic test. We are extremely excited about the insights that the Ideal Beef Evaluation provides. These insights help us provide more accurate genetic recommendations to our customers.

We want to thank our customers, family and friends for their continued support and belief in our breeding program at Jorgensen Land & Cattle. We appreciate each of you!

The **2022 Fall Pasture Ready SMARTBULLS® Sale** will incorporate both in-person and online bidding through DVAuction.com. We invite you to join us in-person at our farm headquarters or through <https://www.dvauction.com/events/145484> for the sale. Videos of the Sale Bulls will be available by Friday, September 23<sup>rd</sup>. Please call or email us with any questions you might have.

Our toll-free number is 1-800-548-2855 or email us at [info@jorgensenfarms.com](mailto:info@jorgensenfarms.com)

Thank you for your interest in our program.

The Jorgensen Family

# 2022 FALL PASTURE READY SMARTBULLS™ SALE

## TERMS & CONDITIONS

### SALE LOCATION:

The sale will be held at the farm headquarters in Ideal, SD.

### SALE DAY TELEPHONES:

Greg Cell Phone: 605-840-2855

Bryan Cell Phone: 605-840-9005

Cody Cell Phone: 605-840-1780

Nick Cell Phone: 605-840-0316

David Thomas: 865-257-1873

Andy Cell Phone: 605-207-0400

Larry Cell Phone: 605-641-3254

### INSPECTION OF CATTLE:

Bulls are penned at the farm and available for inspection; please call to arrange times.

**HEALTH:** All cattle will be sold with health papers for interstate shipment.

**FREE REGIONAL DELIVERY:** Jorgensen Land & Cattle will cooperate in arranging trucking, offering free regional delivery and a maximum cost of \$100 per bull anywhere in the lower 48 states to a central location convenient to you. Please contact Karrisa Bartels at 800-548-2855 (BULL) to arrange delivery.

**TERMS AND CONDITIONS:** Cattle will sell under the suggested Terms and Conditions of the American Angus Association ([https://www.angus.org/pub/suggested\\_sale\\_terms.pdf](https://www.angus.org/pub/suggested_sale_terms.pdf)).

**INSURANCE:** Insurance will be available sale day. Please inform the clerk at the time of settlement if you want insurance. We take every precaution for the care and safety of your purchases; however, we urge all buyers to insure purchases for safe delivery to you.

**LIABILITY:** All persons who attend the sale do so at their own risk, legal or otherwise, for their safety or the behavior of the animals.

**ANNOUNCEMENTS:** Any announcements from the auction block will take precedence over the information listed in this sale book. A supplement sheet will be available on sale day with up-to-date performance information.

**ABSENTEE BUYER OPTIONS:** If you cannot attend, you may still participate by sending your bid to the Auctioneer or a member of the Jorgensen team, or you can **View & Bid in Real-Time on DVAuction (<https://www.dvauction.com/>)**.

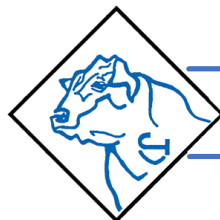
AUCTIONEER: Roger Jacobs



**JORGENSEN LAND & CATTLE**  
**31250 265TH STREET**  
**IDEAL, SD 57541-9230**  
**TOLL FREE: 1-800-548-BULL (2855)**



# Explanations of Performance Records Provided through the



## IDEAL BEEF EVALUATION

LOT #	Bull Name			Assn Reg #	DOB	Sire Line	Sire Name						
	Name of Bull			<b>1</b>	xx/yyyy/2020	<b>2</b>	Name of Sire of Bull						
<b>BW</b>	<b>Adj WW</b>	<b>Adj YW</b>	<b>ADG</b>	<b>BW</b>	<b>WW</b>	<b>YW</b>	<b>SC</b>	<b>Milk</b>	<b>IMF</b>	<b>REA</b>	<b>Selection Indexes</b>		
<b>3</b>	<b>4</b>	<b>5</b>	<b>6</b>	<b>IBE EPDs</b>	<b>11</b>	<b>12</b>	<b>13</b>	<b>14</b>	<b>15</b>	<b>16</b>	<b>17</b>	<b>JVI-H</b>	<b>9</b>
<b>Ratio</b>	<b>7</b>	<b>8</b>		<b>% Rank</b>								<b>JVI-C</b>	<b>10</b>

**1) ASSN & REG #:** Ideal Beef Evaluation or American Angus Assn.

**2) Sire Line** The Y-chromosome can only be passed from father to son and certain traits seem to follow the sire line. Five Sire Lines represent the majority of the bulls in this sale: Rito, Eldorado, Traveler, Emulous, & Emulation.

### **Individual Performance Data**

**3) BW:** Individual's Birth Weight .

**4 & 7) WW & Ratio:** Weaning Weight adjusted to 205 days of age. WW Ratio indicates pre-weaning growth relative to contemporaries. 100 is Average.

**5 & 8) YW & Ratio:** Yearling Weight adjusted to 365 days of age. YW Ratio indicates post-weaning gain relative to contemporaries in this sale. 100 is Average.

**6) ADG:** Average Daily Gain during the test feeding period & measures the growth rate of individual bull calves on feed.

**The Jorgensen Versatility Indexes** are multitrait tools, developed to help rank bulls suitable for use on Heifers (**JVI-H**) and for use on Cows (**JVI-C**).

See pages 62 & 63 for more information.

**9) JVI-H:** A combined Index of traits that helps simplify selection for bulls that are better suited for use on heifers, where lower Birth Weight has more impact than growth, Milk, or carcass traits. Higher numbers are better. Bulls with individual BW greater than 85 lbs or a BW EPD greater than 2.5 receive a JVI-H mark of **Not Recommended** for heifers. You can use your judgement to balance bulls with higher JVI-H scores along with their BW EPDs.

**10) JVI-C:** The JVI-C index reduces the impact of BW and increases the impact of growth (WW & YW), Milk, SC, & carcass traits. Higher JVI-C scores indicate better overall genetic merit; higher scores indicate better performing calves.

# Explanation of Performance Records Provided through the



## EPD & % Rank

EPDs are calculated in the Ideal Beef Evaluation through work with Zoetis Genetics, and are current as of 9/13/22. % Rank tells you how that animal's EPD ranks against all of the other animals within the Ideal Beef Evaluation; it is a relative term. Percentages shaded in green rank in the Top 35%,

- 11) BW:** Prediction of the sire's probable influence on Birth Weight of his calves; expressed in pounds.
- 12) WW:** Predictor of a sire's ability to transmit pre-weaning growth to his calves; expressed in pounds.
- 13) YW:** Predictor of a sire's ability to transmit growth to his calves; expressed in pounds.
- 14) SC:** Predictor of a sire's ability to impact the scrotal size of his calves; expressed in centimeters.
- 15) MILK:** Predictor of a sire's genetic merit for milk production in his daughters; expressed in pounds of calf weaned due to milking ability of his daughters.
- 16) IMF:** Predictor of the difference in a sire's calves for Percent Intramuscular Fat (IMF) in the ribeye. Percent IMF is the common ultrasound term for Marbling and higher numbers are indicative of higher Carcass Quality Grades.
- 17) REA:** Predictor of the difference in ribeye area of a sire's progeny; expressed in square inches.



## Eldorado Sire Line

## Ideal Encore of 9524 Lady

As a calf, Ideal Encore was one of those calves that was so good, you were afraid something bad would happen — instead, he kept getting better and better. Ideal Encore earned a 123 WW ratio (813 lbs) and set a new Jorgensen record for Adj YW at 1,469 lbs (125 ratio).

His performance showed he had potential, but his calves proved he was a sire of performance and carcass value (Top 35% \$B), and he happened to be a Calving Ease sire.

His daughters have proved he is a sire of functional, structurally correct, productive females.

Leased to GENEX.



# LOT 1 - FEATURE LOT

LOT #	Bull Name	AAA Reg #	DOB	Sire Line	Sire Name								
1	Ideal 0443 Eldorado Prime	19869926	02/11/2020	Eldorado	Ideal Encore of 9524 Lady								
<b>BW</b>	<b>Adj WW</b>	<b>Adj YW</b>	<b>ADG</b>	<b>BW</b>	<b>WW</b>	<b>YW</b>	<b>SC</b>	<b>Milk</b>	<b>IMF</b>	<b>REA</b>	<b>Selection Indexes</b>		
110	769	1238	2.88	<b>IBE EPDs</b>	3.6	49	106	0.10	23	0.52	0.44	<b>JVI-H</b>	<b>NR</b>
<b>Ratio</b>	134	115		<b>% Rank</b>	85%	30%	4%	66%	65%	1%	17%	<b>JVI-C</b>	<b>111</b>

**NOTES:** “Eldorado Prime” was the 2nd high selling bull in our 2021 Top 100 Bull Sale. **He is the highest Marbling EPD bull ever produced at Jorgensen Land & Cattle**, and he carries on the Eldorado Line high-growth tradition. **He is the Top Adjusted 205d WW bull in this offering.**

Today, his AAA EPDs rank Top 10% WW, Top 10% YW, Top 20% HP, Top 15% CW, Top 15% Marb, Top 25% \$B, Top 20% \$G, and Top 30% \$C.

LOT #	Bull Name	AAA Reg #	DOB	Sire Line	Sire Name								
2	Ideal 0460 Eldorado of Encor	19629950	02/03/2020	Eldorado	Ideal Encore of 9524 Lady								
<b>BW</b>	<b>Adj WW</b>	<b>Adj YW</b>	<b>ADG</b>	<b>BW</b>	<b>WW</b>	<b>YW</b>	<b>SC</b>	<b>Milk</b>	<b>IMF</b>	<b>REA</b>	<b>Selection Indexes</b>		
83	473	980	3.45	<b>IBE EPDs</b>	1.9	45	101	-0.17	18	0.53	0.38	<b>JVI-H</b>	<b>115</b>
<b>Ratio</b>	83	91		<b>% Rank</b>	49%	65%	10%	94%	97%	1%	32%	<b>JVI-C</b>	<b>118</b>

**NOTES:** Another son of Ideal Encore. Lot 2 ranks in the top 1% for IMF in the IBE; calves should grade well.

LOT #	Bull Name	AAA Reg #	DOB	Sire Line	Sire Name								
3	Ideal 0487 Eldorado of Encor	19629980	02/19/2020	Eldorado	Ideal Encore of 9524 Lady								
<b>BW</b>	<b>Adj WW</b>	<b>Adj YW</b>	<b>ADG</b>	<b>BW</b>	<b>WW</b>	<b>YW</b>	<b>SC</b>	<b>Milk</b>	<b>IMF</b>	<b>REA</b>	<b>Selection Indexes</b>		
88	566	1018	2.87	<b>IBE EPDs</b>	1.3	49	104	0.64	23	0.35	0.34	<b>JVI-H</b>	<b>NR</b>
<b>Ratio</b>	99	95		<b>% Rank</b>	36%	26%	6%	17%	69%	12%	50%	<b>JVI-C</b>	<b>123</b>

**NOTES:** 1/2-brother to Lots 1 & 2. Ranks in the Top 12% for IMF EPD and Top 50% for REA.



# EMULOUS SIRE LINE

The Emulous line was largely developed during the Certified Meat Sire Program period which measured a sire's progeny in meaningful contemporary group sizes compared to a reference sire. Selection within this environment resulted in improved gain-ability and carcass merit. In addition, the Emulous cattle were also very sound cattle who were noted for fertility and longevity.

## Genetic Contributions:

Fertility, Longevity, Sound Feet and Legs, Gain-ability, and Carcass Merit.



LOT #	Bull Name			AAA Reg #	DOB	Sire Line	Sire Name						
4	Ideal 0955 Emulous of 1281			19972729	04/11/2020	Emulous	Ideal 1281 of 6469 Jilt						
<b>BW</b>	<b>Adj WW</b>	<b>Adj YW</b>	<b>ADG</b>	<b>BW</b>	<b>WW</b>	<b>YW</b>	<b>SC</b>	<b>Milk</b>	<b>IMF</b>	<b>REA</b>	<b>Selection Indexes</b>		
89	643	1019	2.33	<b>IBE EPDs</b>	2.3	49	92	0.04	27	0.40	0.44	<b>JVI-H</b>	<b>103</b>
<b>Ratio</b>	112	95		<b>% Rank</b>	60%	27%	31%	81%	31%	6%	16%	<b>JVI-C</b>	<b>NR</b>

**NOTES:** Top 31% for YW, Top 6% for IMF, & Top 16% for REA. Genetics for Gain and Grade; ranks Top 30% for AgBoost Feedlot/Carcass. Good JVI-C score

LOT #	Bull Name			AAA Reg #	DOB	Sire Line	Sire Name						
5	Ideal 0931 Emulous of 1281			19972709	04/14/2020	Emulous	Ideal 1281 of 6469 Jilt						
<b>BW</b>	<b>Adj WW</b>	<b>Adj YW</b>	<b>ADG</b>	<b>BW</b>	<b>WW</b>	<b>YW</b>	<b>SC</b>	<b>Milk</b>	<b>IMF</b>	<b>REA</b>	<b>Selection Indexes</b>		
85	690	1066	2.33	<b>IBE EPDs</b>	3.0	52	89	0.16	27	0.48	0.34	<b>JVI-H</b>	<b>103</b>
<b>Ratio</b>	121	99		<b>% Rank</b>	75%	13%	43%	70%	28%	2%	46%	<b>JVI-C</b>	<b>110</b>

**NOTES:** Ideal 0931 is the 3rd highest bull in this offering for 205d WW at 690 lbs. He Top 2% for IMF, Top 13% for WW, Top 28% for Milk. Top 30% for AgBoost Feedlot/Carcass. Good JVI-H & JVI-C scores.

LOT #	Bull Name			IBE Reg #	DOB	Sire Line	Sire Name						
6	Ideal Emulous 0P71			75313	03/09/2020	Emulous	Ideal 3254 of 1281 Blackcap						
<b>BW</b>	<b>Adj WW</b>	<b>Adj YW</b>	<b>ADG</b>	<b>BW</b>	<b>WW</b>	<b>YW</b>	<b>SC</b>	<b>Milk</b>	<b>IMF</b>	<b>REA</b>	<b>Selection Indexes</b>		
90	596	1015	2.65	<b>IBE EPDs</b>	2.8	47	83	-0.32	24	0.30	0.38	<b>JVI-H</b>	<b>91</b>
<b>Ratio</b>	97	95		<b>% Rank</b>	71%	48%	68%	97%	61%	23%	32%	<b>JVI-C</b>	<b>95</b>

**NOTES:** Top 30% for AgBoost Feedlot/Carcass. Top 23% IMF & Top 32% REA.

# TRAVELER SIRE LINE

QAS Traveler 23-4 is the best-known son of “Band 105”. A 2017 Angus Foundation-funded research project revealed that “Traveler” was the most influential sire in the Angus breed, as measured by genetic contribution. His genetics make up about 10% of Angus animals born today. Today, his daughters number over 9,000 cows & post a combined 101 WW ratio. QAS Traveler 23-4 produced numerous sons who have had a tremendous positive influence on the Jorgensen herd and the entire Angus breed.

## Genetic Contributions:

Calving Ease, Marbling, Functional Females.



LOT #	Bull Name				IBE Reg #	DOB	Sire Line	Ideal 1168					
7	Ideal Traveler 0309				69061	02/11/2019	Traveler	Ideal 1168 of 9814 Lady					
BW	Adj WW	Adj YW	ADG		BW	WW	YW	SC	Milk	IMF	REA	Selection Indexes	
85	663	1196	3.49	IBE EPDs	-0.6	45	92	0.20	28	0.23	0.52	JVI-H	115
Ratio	116	112		% Rank	40%	16%	11%	74%	78%	74%	17%	JVI-C	117

**NOTES:** The first of three Traveler-line, 1/2-brothers that rank in the Top 15% for JVI-H.

LOT #	Bull Name				AAA Reg #	DOB	Sire Line	Sire Name					
8	Ideal 0772 Traveler of 1168				19972664	03/19/2020	Traveler	Ideal 1168 of 9814 Lady					
BW	Adj WW	Adj YW	ADG		BW	WW	YW	SC	Milk	IMF	REA	Selection Indexes	
85	620	1058	2.77	IBE EPDs	-0.6	45	92	0.20	28	0.23	0.52	JVI-H	114
Ratio	108	99		% Rank	10%	64%	32%	66%	20%	48%	6%	JVI-C	109

**NOTES:** 1/2-brother to Lots 7 & 9. He is low BW, but he also has muscle—Top 6% for Ribeye Area

LOT #	Bull Name				AAA Reg #	DOB	Sire Line	Sire Name					
9	Ideal 0750 Traveler of 1168				19972646	03/17/2020	Traveler	Ideal 1168 of 9814 Lady					
BW	Adj WW	Adj YW	ADG		BW	WW	YW	SC	Milk	IMF	REA	Selection Indexes	
85	614	1012	2.47	IBE EPDs	-0.4	44	75	-0.16	22	0.23	0.41	JVI-H	111
Ratio	107	94		% Rank	11%	72%	89%	93%	76%	48%	23%	JVI-C	104

**NOTES:** 1/2-brother to Lots 7 & 8. Low BW, but Top 23% for Ribeye Area.





LOT #	Bull Name			IBE Reg #	DOB	Sire Line	Sire Name						
10	Ideal Traveler 0L19			74488	02/14/2020	Traveler	Connealy Comrade 1385						
BW	Adj WW	Adj YW	ADG		BW	WW	YW	SC	Milk	IMF	REA	Selection Indexes	
69	561	1152	6.00	IBE EPDs	-2.8	40	83	-0.28	26	0.01	0.44	JVI-H	108
Ratio	98	107		% Rank	1%	92%	67%	97%	38%	98%	18%	JVI-C	103

NOTES: Tied for 4th highest ADG in the sale. He is also Top 1% for BW, Top 18% for REA. Top 11% for JVI-H

LOT #	Bull Name			IBE Reg #	DOB	Sire Line	Sire Name						
11	Ideal Traveler 0B19			74451	03/06/2020	Traveler	Barstow Bankroll B73						
BW	Adj WW	Adj YW	ADG		BW	WW	YW	SC	Milk	IMF	REA	Selection Indexes	
72	608	1170	3.96	IBE EPDs	-2.3	38	77	0.03	26	0.18	0.35	JVI-H	112
Ratio	101	109		% Rank	1%	96%	83%	82%	37%	66%	44%	JVI-C	99

NOTES: Top 1% for BW, Top 12% for JVI-H

LOT #	Bull Name			IBE Reg #	DOB	Sire Line	Sire Name						
12	Ideal Traveler 0L33			74007	02/05/2020	Traveler	Connealy Comrade 1385						
BW	Adj WW	Adj YW	ADG		BW	WW	YW	SC	Milk	IMF	REA	Selection Indexes	
71	509	1041	5.85	IBE EPDs	-2.6	37	70	0.21	27	0.16	0.44	JVI-H	111
Ratio	89	97		% Rank	1%	97%	95%	64%	32%	73%	16%	JVI-C	97

NOTES: Low BW Traveler Line bull that gained 5.85 lbs/day and ranks Top 16% for REA. Top 13% for JVI-H

LOT #	Bull Name			IBE Reg #	DOB	Sire Line	Sire Name						
13	Ideal Traveler 0L21			74123	03/10/2020	Traveler	Ideal 7773 of 332 3403						
BW	Adj WW	Adj YW	ADG		BW	WW	YW	SC	Milk	IMF	REA	Selection Indexes	
71	617	1227	5.11	IBE EPDs	-0.6	46	77	1.14	30	0.28	0.25	JVI-H	108
Ratio	108	114		% Rank	23%	53%	85%	>1%	9%	29%	81%	JVI-C	103

NOTES: Low BW Traveler bull with a Top 25% JVI-H.



# WE HOPE WE GET TO SEE YOUR FACE AT OUR SALE BUT IF THAT'S NOT AN OPTION WE'LL BRING THE SALE TO YOU

## In-Person

We enjoy getting together with friends, family, & customers at Jorgensen Land & Cattle. There is something special about having a big crowd of folks at our sales; we love watching people visit, look through the bulls, talk cattle & catch-up on family. We sure hope you can attend. However, if you can't join us this year, we have been working to make sure you can participate from your home, farm or another convenient location.

## Visit Ahead of the Sale

For decades, we have done business by phone & on a handshake. That won't change! We would be happy to schedule a time for you to look through the bulls or talk you through them by phone ahead of the sale. We can talk about what kind of bulls you want this year and we will arrange for someone to represent you at the sale, based on your instructions. It is simple and we guarantee your satisfaction. Just call us: 800-548-BULL (2855).

## Watch & Bid On-Line & in Real-Time

If you have high-speed internet service, On-line bidding is a great way to participate - if you just can't be here in-person. In 2019, about 15% of our lots were sold through [www.DVAuction.com](http://www.DVAuction.com). In 2020, the percentage of lots sold on-line increased to 33%.

Unfortunately, dial-up or satellite internet generally will not keep-up and is not recommended for On-line bidding.

- 1) Create an account at [www.dvauction.com](http://www.dvauction.com) under the "Create New Account" tab
- 2) Apply for bidding by clicking the "Details" tab at least 24 hours prior to the sale
- 3) Tune in for the sale and make your purchases – or— Let DVAuction represent your bid

**If you have questions, please call:**

**402-316-5460**



## Real-Time Phone Bidding

Real-time phone bidding is more cumbersome than arranging for someone to represent you ahead of time. Our sale moves faster than most bull sales. The average time for a bull to be sold is less than one minute, so it works best for us to talk ahead of the sale and establish a game plan for you. Please contact one of the individuals listed below to visit about what you need and how we can work with you.

### SALE DAY TELEPHONES:

**Greg Cell: 605-840-2855**

**Nick Cell: 605-840-0316**

**Cody Cell: 605-840-1780**

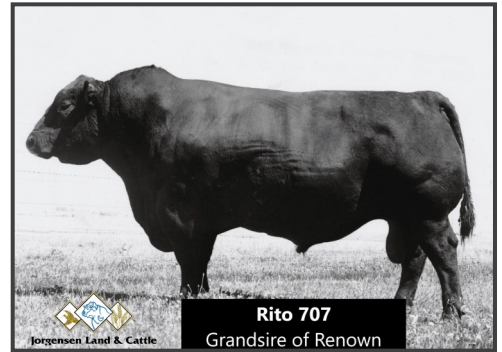
**David Cell: 865-257-1873**

**Bryan Cell: 605-840-9005**

**Andy Cell: 605-207-0400**

## RITO SIRE LINE

SAV Resource 1441 and SAV Renown 3439 are powerful, full brother grandsons of the Jorgensen foundation sire, RR Rito 707. "Rito 7075," the sire of Resource and Renown, was bred in the Jorgensen herd by combining the Rito 707 with the productive foundation Jorgensen female, Ideal 3407. Both Resource and Renown trace 59 times to Rito 707, and have a total of 112 Jorgensen-bred or -owned ancestors in their foundations.



LOT #	Bull Name	IBE Reg #	DOB	Sire Line	Sire Name
14	Ideal Rito 0B76	74338	04/05/2020	Rito	Ideal 7114 of REN Lady

BW	Adj WW	Adj YW	ADG		BW	WW	YW	SC	Milk	IMF	REA	Selection Indexes	
77	578	1095	2.71	IBE EPDs	1.9	51	103	0.95	20	0.27	0.46	JVI-H	123
Ratio	96	102		% Rank	50%	18%	7%	3%	91%	34%	13%	JVI-C	124

**NOTES:** TOP 1% JVI-H Rito Line Bull, with muscle (Top 13% REA).

LOT #	Bull Name	IBE Reg #	DOB	Sire Line	Sire Name
15	Ideal Rito 0M12	73902	04/16/2020	Rito	Ideal 7121 of REN Betty

BW	Adj WW	Adj YW	ADG		BW	WW	YW	SC	Milk	IMF	REA	Selection Indexes	
70	651	1048	2.46	IBE EPDs	1.6	52	98	0.59	22	0.18	0.45	JVI-H	120
Ratio	117	98		% Rank	44%	12%	15%	21%	77%	66%	15%	JVI-C	122

**NOTES:** Top 3% JVIH. Top 15% REA

LOT #	Bull Name	IBE Reg #	DOB	Sire Line	Sire Name
16					

OUT

LOT #	Bull Name	IBE Reg #	DOB	Sire Line	Sire Name
17	Ideal Rito 0E34	74620	03/10/2020	Rito	Ideal 7122 of REN Blackcap

BW	Adj WW	Adj YW	ADG		BW	WW	YW	SC	Milk	IMF	REA	Selection Indexes	
82	664	1070	2.40	IBE EPDs	1.8	51	104	0.01	22	0.03	0.39	JVI-H	107
Ratio	108	100		% Rank	47%	18%	6%	83%	84%	96%	31%	JVI-C	108

**NOTES:** Top 25% JVI-H

## EMULATION SIRE LINE

The Emulation line of cattle brings a lot to the table for Cow/Calf producers. Jorgensen Land & Cattle carefully evaluated and very selectively hand-pick some Emulation sires who retain the best traits of the Emulation line and still exhibit the disposition that we want in our cattle.

**Genetic Contributions:** Fertility, Maternal Ability, Longevity, Excellent Udder Structure, Soundness and Carcass Quality — All traits of importance to building profitability into cow herds.



LOT #	Bull Name	IBE Reg #	DOB	Sire Line	Sire Name								
<b>18</b>	<b>Ideal Emulation 0R38</b>	73823	03/19/2020	<b>Emulation</b>	Sinclair Sam 8XX11								
<b>BW</b>	<b>Adj WW</b>	<b>Adj YW</b>	<b>ADG</b>	<b>IBE EPDs</b>	<b>BW</b>	<b>WW</b>	<b>YW</b>	<b>SC</b>	<b>Milk</b>	<b>IMF</b>	<b>REA</b>	<b>Selection Indexes</b>	
79	672	918	1.90	0.4	46	89	0.62	27	0.24	0.25	<b>JVI-H</b>	<b>109</b>	
<b>Ratio</b>	116	86		<b>% Rank</b>	21%	57%	43%	18%	28%	45%	81%	<b>JVI-C</b>	<b>105</b>

**NOTES:** Bood JVI-H & JVI-C scores. Top 20% JVI-H

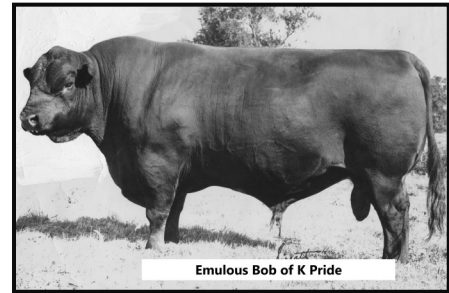
LOT #	Bull Name	IBE Reg #	DOB	Sire Line	Sire Name								
<b>19</b>	<b>Ideal Emulation 0Q57</b>	73615	03/01/2020	<b>Emulation</b>	UV Shadow Rider 1177								
<b>BW</b>	<b>Adj WW</b>	<b>Adj YW</b>	<b>ADG</b>	<b>IBE EPDs</b>	<b>BW</b>	<b>WW</b>	<b>YW</b>	<b>SC</b>	<b>Milk</b>	<b>IMF</b>	<b>REA</b>	<b>Selection Indexes</b>	
72	518	921	3.27	-0.4	39	67	0.19	20	0.33	0.22	<b>JVI-H</b>	<b>108</b>	
<b>Ratio</b>	90	86		<b>% Rank</b>	11%	95%	97%	67%	90%	17%	88%	<b>JVI-C</b>	<b>99</b>

**NOTES:** Low BW EPD Emulation bull with Top 17% IMF, and Top 25% JVI-H.

**The Loft at the  
 Jorgensen Land & Cattle  
 headquarters will host  
 the 2022 Fall Pasture-Ready  
 SMARTBULLS™ Sale**



## EMULOUS SIRE LINE



LOT #	Bull Name	IBE Reg #	DOB	Sire Line	Sire Name								
<b>20</b>	<b>Ideal Emulous 0A06</b>	74064	03/21/2020	<b>Emulous</b>	Ideal 3270 of 1281 Jilt								
<b>BW</b>	<b>Adj WW</b>	<b>Adj YW</b>	<b>ADG</b>	<b>IBE EPDs</b>	<b>BW</b>	<b>WW</b>	<b>YW</b>	<b>SC</b>	<b>Milk</b>	<b>IMF</b>	<b>REA</b>	<b>Selection Indexes</b>	
83	548	1273	5.89	1.1	44	88	0.39	19	0.23	0.46	JVI-H	<b>112</b>	
<b>Ratio</b>	96	119		<b>% Rank</b>	32%	70%	49%	44%	96%	47%	13%	JVI-C	<b>109</b>

**NOTES:** Top 15% for JVI-H.

LOT #	Bull Name	IBE Reg #	DOB	Sire Line	Sire Name								
<b>21</b>	<b>Ideal Emulous 0L49</b>	74121	02/22/2020	<b>Emulous</b>	Ideal 4631 of 1281 Blackcap								
<b>BW</b>	<b>Adj WW</b>	<b>Adj YW</b>	<b>ADG</b>	<b>IBE EPDs</b>	<b>BW</b>	<b>WW</b>	<b>YW</b>	<b>SC</b>	<b>Milk</b>	<b>IMF</b>	<b>REA</b>	<b>Selection Indexes</b>	
77	551	1070	4.89	1.6	49	90	0.13	23	0.34	0.26	JVI-H	<b>111</b>	
<b>Ratio</b>	96	100		<b>% Rank</b>	6044	27%	39%	73%	71%	14%	79%	JVI-C	<b>113</b>

**NOTES:** Top 12% JVI-H and Top 2% for IMF.

LOT #	Bull Name	IBE Reg #	DOB	Sire Line	Sire Name								
<b>22</b>	<b>Ideal Emulous 0F56</b>	75092	04/04/2020	<b>Emulous</b>	Ideal 7542 of 4609 Blackcap								
<b>BW</b>	<b>Adj WW</b>	<b>Adj YW</b>	<b>ADG</b>	<b>IBE EPDs</b>	<b>BW</b>	<b>WW</b>	<b>YW</b>	<b>SC</b>	<b>Milk</b>	<b>IMF</b>	<b>REA</b>	<b>Selection Indexes</b>	
80	577	1104	3.27	0.7	47	95	0.89	28	0.35	0.35	JVI-H	<b>114</b>	
<b>Ratio</b>	101	103		<b>% Rank</b>	25%	48%	22%	4%	18%	12%	43%	JVI-C	<b>113</b>

**NOTES:** Top 10% JVI-H and Top 12% for IMF.

## DAKOTA TERRITORY SIRE LINE

LOT #	Bull Name	IBE Reg #	DOB	Sire Line	Sire Name								
<b>23</b>	<b>Ideal Dakota Territory 0L73</b>	74487	02/05/2020	<b>Dakota Territory</b>									
<b>BW</b>	<b>Adj WW</b>	<b>Adj YW</b>	<b>ADG</b>	<b>IBE EPDs</b>	<b>BW</b>	<b>WW</b>	<b>YW</b>	<b>SC</b>	<b>Milk</b>	<b>IMF</b>	<b>REA</b>	<b>Selection Indexes</b>	
79	586	1054	4.78	-1.2	35	63	.13	21	0.40	0.31	JVI-H	<b>91</b>	
<b>Ratio</b>	103	98		<b>% Rank</b>	5%	99%	99%	73%	87%	6%	58%	JVI-C	<b>95</b>

**NOTES:** Top 17% for JVI-H.

## DAKOTA TERRITORY SIRE LINE

LOT #	Bull Name			IBE Reg #	DOB	Sire Line	Sire Name						
24	Ideal Dakota Territory 0L47			74088	03/07/2020	Emulous	Ideal 3270 of 1281 Jilt						
BW	Adj WW	Adj YW	ADG		BW	WW	YW	SC	Milk	IMF	REA	Selection Indexes	
83	548	1194	5.07	IBE EPDs	1.1	44	88	0.39	19	0.23	0.46	JVI-H	112
Ratio	96	111		% Rank	32%	70%	49%	44%	96%	47%	13%	JVI-C	109

NOTES: Top 15% for JVI-H.

## SHOSHONE SIRE LINE

LOT #	Bull Name			IBE Reg #	DOB	Sire Line	Sire Name						
25	Ideal Shoshone 0R04			73629	01/28/2020	Dakota Territory	Poss Accomplishment 720F						
BW	Adj WW	Adj YW	ADG		BW	WW	YW	SC	Milk	IMF	REA	Selection Indexes	
75	590	1012	3.74	IBE EPDs	-1.1	39	75	0.43	27	0.25	0.41	JVI-H	108
Ratio	102	94		% Rank	5%	93%	89%	37%	30%	38%	24%	JVI-C	98

NOTES: Top 21% JVI-H and Top 24% for REA.



## Eldorado SIRE LINE

LOT #	Bull Name	IBE Reg #	DOB	Sire Line	Sire Name
26	Ideal 0458 Eldorado of ENCR	19869945	02/02/2020	Eldorado	Ideal Encore of 9524 Lady

BW	Adj WW	Adj YW	ADG		BW	WW	YW	SC	Milk	IMF	REA	Selection Indexes	
63	530	997	3.07	IBE EPDs	-1.5	44	101	-0.19	24	0.32	0.27	JVI-H	123
Ratio	93	93		% Rank	3%	73%	10%	94%	64%	18%	74%	JVI-C	117

NOTES: TOP 1% JVI-H, Growth, & Muscle.

LOT #	Bull Name	IBE Reg #	DOB	Sire Line	Sire Name
27	Ideal 0465 Eldorado of ENCR	19869957	02/07/2020	Eldorado	Ideal Encore of 9524 Lady

BW	Adj WW	Adj YW	ADG		BW	WW	YW	SC	Milk	IMF	REA	Selection Indexes	
73	594	1087	3.08	IBE EPDs	-1.0	40	83	-0.15	26	0.24	0.42	JVI-H	112
Ratio	98	101		% Rank	6%	91%	68%	93%	43%	45%	23%	JVI-C	113

NOTES: TOP 11% JVI-H .

LOT #	Bull Name	IBE Reg #	DOB	Sire Line	Sire Name
28	Ideal 0480 Eldorado of ENCR	19869973	02/12/2020	Eldorado	Ideal Encore of 9524 Lady

BW	Adj WW	Adj YW	ADG		BW	WW	YW	SC	Milk	IMF	REA	Selection Indexes	
114	580	997	2.65	IBE EPDs	1.5	47	95	0.26	22	0.40	0.26	JVI-H	NR
Ratio	101	93		% Rank	40%	50%	22%	59%	79%	6%	79%	JVI-C	122

NOTES: Top 22% YW and Top 6% IMF.

LOT #	Bull Name	IBE Reg #	DOB	Sire Line	Sire Name
29	Ideal 0497 Eldorado of 8461	19869992	02/25/2020	Eldorado	Ideal 8461 of 5790 Blackcap

BW	Adj WW	Adj YW	ADG		BW	WW	YW	SC	Milk	IMF	REA	Selection Indexes	
81	522	939	2.78	IBE EPDs	1.6	44	83	0.23	25	0.22	0.35	JVI-H	94
Ratio	90	88		% Rank	42%	73%	66%	62%	46%	53%	45%	JVI-C	92

NOTES:



# Jorgensen Land & Cattle



## Traveler SIRE LINE

LOT #	Bull Name	IBE Reg #	DOB	Sire Line	Sire Name
30	Ideal 0637 Traveler of 4223	19870050	02/10/2020	Traveler	Ideal 4223 of 1168 Blkbrd

BW	Adj WW	Adj YW	ADG		BW	WW	YW	SC	Milk	IMF	REA	Selection Indexes	
84	656	1076	2.60	IBE EPDs	-0.5	40	79	0.19	28	0.09	0.48	JVI-H	98
Ratio	115	100		% Rank	10%	90%	79%	66%	21%	90%	10%	JVI-C	90

NOTES: Low BW & Muscle, in one package.

LOT #	Bull Name	IBE Reg #	DOB	Sire Line	Sire Name
31	Ideal 0715 Traveler of 7033	19870132	03/02/2020	Traveler	Ideal 7033 of 0116 Lady

BW	Adj WW	Adj YW	ADG		BW	WW	YW	SC	Milk	IMF	REA	Selection Indexes	
90	615	1023	2.55	IBE EPDs	2.6	46	89	0.20	28	0.39	0.24	JVI-H	NR
Ratio	108	95		% Rank	66%	55%	43%	65%	19%	7%	83%	JVI-C	94

NOTES:

LOT #	Bull Name	IBE Reg #	DOB	Sire Line	Sire Name
32	Ideal Traveler 0Q39	73604	03/12/2020	Traveler	UV Thunder 681

BW	Adj WW	Adj YW	ADG		BW	WW	YW	SC	Milk	IMF	REA	Selection Indexes	
70	468	999	4.14	IBE EPDs	-0.8	37	69	0.19	25	0.28	0.20	JVI-H	100
Ratio	81	93		% Rank	7%	97%	96%	66%	46%	31%	92%	JVI-C	90

NOTES:

LOT #	Bull Name	IBE Reg #	DOB	Sire Line	Sire Name
33					

OUT



# Jorgensen Land & Cattle





# DAKOTA TERRITORY SIRE LINE

LOT #	Bull Name			IBE Reg #	DOB	Sire Line	Sire Name						
34	Ideal Dakota Territory 0J08			74530	03/12/2020	Dakota Territory							
BW	Adj WW	Adj YW	ADG		BW	WW	YW	SC	Milk	IMF	REA	Selection Indexes	
95	610	1155	4.59	IBE EPDs	2.5	48	86	0.83	25	0.22	0.33	JVI-H	100
Ratio	107	108		% Rank	64%	35%	57%	6%	50%	50%	52%	JVI-C	101

NOTES:

LOT #	Bull Name			IBE Reg #	DOB	Sire Line	Sire Name						
35	Ideal Dakota Territory 0M02			74228	04/06/2020	Dakota Territory							
BW	Adj WW	Adj YW	ADG		BW	WW	YW	SC	Milk	IMF	REA	Selection Indexes	
62	608	1154	3.52	IBE EPDs	0.0	44	78	0.04	29	0.17	0.40	JVI-H	100
Ratio	110	108		% Rank	15%	70%	81%	81%	14%	69%	26%	JVI-C	94

NOTES:

LOT #	Bull Name			IBE Reg #	DOB	Sire Line	Sire Name						
36	Ideal Dakota Territory 0M51			74226	04/06/2020	Dakota Territory							
BW	Adj WW	Adj YW	ADG		BW	WW	YW	SC	Milk	IMF	REA	Selection Indexes	
75	558	983	2.70	IBE EPDs	1.8	45	83	0.51	25	0.22	0.36	JVI-H	100
Ratio	101	92		% Rank	47%	61%	65%	28%	56%	53%	41%	JVI-C	99

NOTES:

LOT #	Bull Name			IBE Reg #	DOB	Sire Line	Sire Name						
37	Ideal Dakota Territory 0Q28			73837	03/16/2020	Dakota Territory							
BW	Adj WW	Adj YW	ADG		BW	WW	YW	SC	Milk	IMF	REA	Selection Indexes	
69	486	903	2.25	IBE EPDs	0.5	45	76	0.55	26	0.12	0.31	JVI-H	101
Ratio	84	84		% Rank	22%	67%	87%	24%	35%	84%	59%	JVI-C	96

NOTES:



## RITO SIRE LINE



LOT #	Bull Name	IBE Reg #	DOB	Sire Line	Sire Name
<b>38</b>	<b>Ideal Rito 0P61</b>	75322	03/09/2020	<b>Rito</b>	Ideal 7113 REN Marjorie

BW	Adj WW	Adj YW	ADG		BW	WW	YW	SC	Milk	IMF	REA	Selection Indexes	
90	576	990	2.63	<b>IBE EPDs</b>	4.9	51	97	0.45	26	0.16	0.52	<b>JVI-H</b>	<b>NR</b>
<b>Ratio</b>	94	92		<b>% Rank</b>	96%	15%	18%	35%	36%	73%	6%	<b>JVI-C</b>	<b>93</b>

**NOTES:** Growth & Muscle.

LOT #	Bull Name	IBE Reg #	DOB	Sire Line	Sire Name
<b>39</b>	<b>Ideal Rito 0J30</b>	74532	03/17/2020	<b>Rito</b>	Ideal 8082 of REN Marjorie

BW	Adj WW	Adj YW	ADG		BW	WW	YW	SC	Milk	IMF	REA	Selection Indexes	
102	686	1313	5.11	<b>IBE EPDs</b>	3.6	54	113	0.86	24	0.32	0.33	<b>JVI-H</b>	<b>NR</b>
<b>Ratio</b>	120	122		<b>% Rank</b>	85%	4%	1%	5%	67%	18%	53%	<b>JVI-C</b>	<b>121</b>

**NOTES:** One heck of a bull. Phenotype, WW, WW, IMF & Muscle!

LOT #	Bull Name	IBE Reg #	DOB	Sire Line	Sire Name
<b>40</b>	<b>Ideal Rito 0J68</b>	74346	03/27/2020	<b>Rito</b>	Ideal 7114 of REN Lady

BW	Adj WW	Adj YW	ADG		BW	WW	YW	SC	Milk	IMF	REA	Selection Indexes	
89	578	901	1.93	<b>IBE EPDs</b>	2.1	50	98	0.41	20	0.22	0.30	<b>JVI-H</b>	<b>NR</b>
<b>Ratio</b>	96	84		<b>% Rank</b>	55%	25%	15%	40%	90%	52%	62%	<b>JVI-C</b>	<b>113</b>

**NOTES:** Top 25% WW & Top 15% YW

LOT #	Bull Name	IBE Reg #	DOB	Sire Line	Sire Name
<b>41</b>	<b>Ideal Rito 0P44</b>	75246	04/03/2020	<b>Rito</b>	Ideal 7113 of REN Marjorie

BW	Adj WW	Adj YW	ADG		BW	WW	YW	SC	Milk	IMF	REA	Selection Indexes	
87	717	1067	2.19	<b>IBE EPDs</b>	2.9	51	103	0.31	27	0.06	0.39	<b>JVI-H</b>	<b>97</b>
<b>Ratio</b>	117	99		<b>% Rank</b>	72%	14%	7%	52%	35%	94%	30%	<b>JVI-C</b>	<b>101</b>

**NOTES:** Tied for 2nd heaviest bull in this sale for Adj. 205d WW.  
Check out this bulls rank for WW & YW EPDs, and for Muscle.

# EMULATION SIRE LINE



LOT #	Bull Name	IBE Reg #	DOB	Sire Line	Sire Name
42	Ideal Emulation 0Q93	73838	03/21/2020	Emulation	Sinclair Charger 7EP44

BW	Adj WW	Adj YW	ADG		BW	WW	YW	SC	Milk	IMF	REA	Selection Indexes	
83	548	909	2.08	IBE EPDs	1.1	44	88	0.39	19	0.23	0.46	JVI-H	112
Ratio	96	85		% Rank	32%	70%	49%	44%	96%	47%	13%	JVI-C	109

**NOTES:** Low BW and excellent muscle (REA Top 13%). Top 15% for JVI-H.

LOT #	Bull Name	IBE Reg #	DOB	Sire Line	Sire Name
43	Ideal Emulation 0Q94	73735	04/15/2020	Emulation	Sinclair Exactly 4U2

BW	Adj WW	Adj YW	ADG		BW	WW	YW	SC	Milk	IMF	REA	Selection Indexes	
75	608	1121	3.57	IBE EPDs	-0.4	42	65	0.59	25	0.10	0.29	JVI-H	97
Ratio	105	105		% Rank	19%	85%	98%	21%	48%	88%	66%	JVI-C	88

**NOTES:**

LOT #	Bull Name	IBE Reg #	DOB	Sire Line	Sire Name
44	Ideal Emulation 0S86	73853	03/20/2020	Emulation	Sinclair Black Iron 7UR19

BW	Adj WW	Adj YW	ADG		BW	WW	YW	SC	Milk	IMF	REA	Selection Indexes	
95	685	1067	2.86	IBE EPDs	4.8	53	95	-0.18	25	0.30	0.21	JVI-H	88
Ratio	119	99		% Rank	96%	6%	23%	94%	55%	24%	90%	JVI-C	98

**NOTES:**





The Jorgensen family has always strived to find better ways to do things, whether creating better beef cattle genetics, crops or soil conservation practices, and that heritage of innovation led us to work with Zoetis to create the **IDEAL BEEF EVALUATION**.

This proprietary genetic evaluation is the product of a partnership between Zoetis and Jorgensen Land & Cattle. This joint project combines the tremendous performance testing data set & DNA bank of Jorgensen Land & Cattle with the genetics, analytical, and R&D teams of Zoetis, along with their gold standard HD50K genomic test.

The Ideal Beef Evaluation is backed by over 150,000 phenotypic performance observations from both Registered & Commercial Angus herds and more than 10,000 HD50K genomic tested animals. The combination of performance and genotypic data from these herds creates greater selection accuracy for our herd and our customers.

### How Does the **IDEAL BEEF EVALUATION**<sup>SM</sup> Benefit Cattlemen

We always strive to match the right bull with the needs of each bull customer and the Ideal Beef Evaluation gives us a better understanding of the genetic makeup of each of our bulls, and that allows our commercial customers to make more informed bull buying and leasing decisions to help them reach their goals.

### Genetic Predictions

Our initial launch of the Ideal Beef Evaluation (2019) produced genomic-enhanced EPDs for **BW**, **WW**, **YW**, **SC**, **Milk**, **IMF**, **REA**, and **FAT**. In addition, we incorporated those data into two easy-to-use Selection Indexes: a **Jorgensen Versatility Index** (JVI) for bulls to be used on Heifers (**JVI-H**) and for bulls to be used on Cows (**JVI-C**).

### Current Traits & Indexes

- Birth Weight (**BW**) • Intramuscular Fat (**IMF**)
- Weaning Weight (**WW**) • Ribeye Area (**REA**)
- Yearling Weight (**YW**) • Rib Fat (**FAT**)
- Scrotal Circumference (**SC**) • Rump Fat (**RFAT**)
- Milk (**Milk**) • Yearling Breeding Soundness (**YBS**)
- **Jorgensen Versatility Index – Heifers (JVI-H)**
- **Jorgensen Versatility Index – Cows (JVI-C)**



## DAKOTA TERRITORY SIRE LINE

LOT #	Bull Name			IBE Reg #	DOB	Sire Line	Sire Name							
45	Ideal Dakota Territory 0A55			73993	03/01/2020	Dakota Territory								
BW	Adj WW	Adj YW	ADG		BW	WW	YW	SC	Milk	IMF	REA	Selection Indexes		
89	612	1246	5.64		3.4	52	94	0.43	29	0.28	0.19	JVI-H	NR	
Ratio	107	116			% Rank	82%	9%	25%	37%	15%	30%	93%	JVI-C	102

NOTES:

LOT #	Bull Name			IBE Reg #	DOB	Sire Line	Sire Name							
46	Ideal Dakota Territory 0A96			74080	03/17/2020	Dakota Territory								
BW	Adj WW	Adj YW	ADG		BW	WW	YW	SC	Milk	IMF	REA	Selection Indexes		
95	631	1437	6.59		5.1	56	100	0.69	29	0.18	0.29	JVI-H	NR	
Ratio	110	134			% Rank	97%	2%	12%	13%	12%	65%	66%	JVI-C	100

NOTES: GROWTH bull. Top Adj. 365d YW bull and Top Test ADG bull in this sale.

LOT #	Bull Name			IBE Reg #	DOB	Sire Line	Sire Name							
47	Ideal Dakota Territory 0A33			74037	03/19/2020	Dakota Territory								
BW	Adj WW	Adj YW	ADG		BW	WW	YW	SC	Milk	IMF	REA	Selection Indexes		
85	632	1319	5.54		2.3	51	92	0.70	31	0.20	0.30	JVI-H	100	
Ratio	111	123			% Rank	60%	15%	31%	13%	6%	59%	62%	JVI-C	102

NOTES: 5th heaviest Adj. 365d YW bull in this sale. This bulls calves should grow and his daughters should be wet.

## ELDORADO SIRE LINE

LOT #	Bull Name			AAA Reg #	DOB	Sire Line	Sire Name							
48	Ideal 0488 Eldorado of ENCR			19869242	02/21/2020	Eldorado	Ideal Encore of 9524 Lady							
BW	Adj WW	Adj YW	ADG		BW	WW	YW	SC	Milk	IMF	REA	Selection Indexes		
77	689	1031	2.08		-0.1	46	75	0.70	30	0.28	0.25	JVI-H	110	
Ratio	122	196			% Rank	14%	55%	89%	13%	8%	28%	80%	JVI-C	105

NOTES: Ranks as #4 bull in this sale for Adj. 205d WW. His daughters should be wet & raise heavy calves.

LOT #	Bull Name	Reg #	DOB	Sire Line	Sire Name
49					

OUT



## Traveler Sire Line

LOT #	Bull Name	AAA Reg #	DOB	Sire Line	Sire Name
50	Ideal 0642 Traveler of 4223	19870058	02/17/2020	Traveler	Ideal 4223 of 1168 Blkbrd

BW	Adj WW	Adj YW	ADG		BW	WW	YW	SC	Milk	IMF	REA	Selection Indexes	
100	657	1049	2.42	IBE EPDs	2.0	45	85	0.06	29	0.26	0.49	JVI-H	NR
Ratio	115	98		% Rank	53%	62%	59%	79%	14%	35%	9%	JVI-C	93

**NOTES:** Should make wet daughters, and calves that will grade.



LOT #	Bull Name	AAA Reg #	DOB	Sire Line	Sire Name
51	Ideal 0640 Traveler of 4223	19870055	02/15/2020	Traveler	Ideal 4223 of 1168 Blkbrd

BW	Adj WW	Adj YW	ADG		BW	WW	YW	SC	Milk	IMF	REA	Selection Indexes	
107	685	1012	1.94	IBE EPDs	3.8	50	89	0.05	23	0.43	0.28	JVI-H	NR
Ratio	120	94		% Rank	87%	20%	43%	80%	69%	4%	72%	JVI-C	105

**NOTES:** 5th heaviest bull in this sale for Adj. 205d WW. High IMF bull.

LOT #	Bull Name	AAA Reg #	DOB	Sire Line	Sire Name
52	Ideal 0785 Traveler of 4223	19972676	034/22/2020	Traveler	Ideal 4223 of 1168 Blkbrd

BW	Adj WW	Adj YW	ADG		BW	WW	YW	SC	Milk	IMF	REA	Selection Indexes		
90	670	1056	2.33		IBE EPDs	1.1	45	84	-0.28	31	0.20	0.35	JVI-H	NR
Ratio	1117	98			% Rank	31%	61%	64%	97%	4%	60%	45%	JVI-C	89

NOTES:

LOT #	Bull Name	AAA Reg #	DOB	Sire Line	Sire Name
53	Ideal 0650 Traveler Of 4223	19870213	02/22/2020	Traveler	Ideal 4223 of 1168 Blkbrd

BW	Adj WW	Adj YW	ADG		BW	WW	YW	SC	Milk	IMF	REA	Selection Indexes		
78	555	992	2.76		IBE EPDs	-0.6	39	79	0.17	25	-0.01	0.49	JVI-H	99
Ratio	97	92			% Rank	9%	94%	78%	69%	51%	99%	9%	JVI-C	90

NOTES: Good low BW bull with muscle

LOT #	Bull Name	AAA Reg #	DOB	Sire Line	Sire Name
54	Ideal 0757 Traveler of 1168	19972652	03/23/2020	Traveler	Ideal 1168 of 9814 Lady

BW	Adj WW	Adj YW	ADG		BW	WW	YW	SC	Milk	IMF	REA	Selection Indexes		
79	634	1070	2.73		IBE EPDs	1.1	43	83	0.02	28	0.10	0.42	JVI-H	89
Ratio	111	100			% Rank	32%	78%	66%	83%	19%	21%	54%	JVI-C	86

NOTES: Low BW bull that should sire wet daughters and calves that will grade.

The first of three 1/2-brothers

LOT #	Bull Name	AAA Reg #	DOB	Sire Line	Sire Name
55	Ideal 0752 Traveler of 1168	19972648	03/26/2020	Traveler	Ideal 1168 of 9814 Lady

BW	Adj WW	Adj YW	ADG		BW	WW	YW	SC	Milk	IMF	REA	Selection Indexes		
80	646	1148	3.20		IBE EPDs	1.8	48	99	0.73	26	0.10	0.45	JVI-H	105
Ratio	113	107			% Rank	48%	34%	12%	39%	89%	89%	15%	JVI-C	106

NOTES: Low BW bull that should sire calves that are heavy at weaning, and have goo growth to yearling.

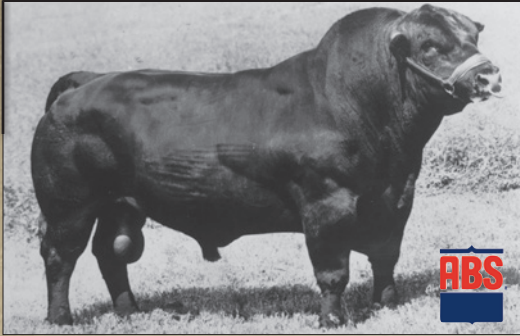
1/2-brother to Lots 54 & 56.

LOT #	Bull Name	AAA Reg #	DOB	Sire Line	Sire Name
56	Ideal 0769 Traveler of 1168	19972661	03/27/2020	Traveler	Ideal 1168 of 9814 Lady

BW	Adj WW	Adj YW	ADG		BW	WW	YW	SC	Milk	IMF	REA	Selection Indexes		
84	572	1006	2.77		IBE EPDs	1.0	47	97	0.11	28	-0.08	0.59	JVI-H	97
Ratio	100	94			% Rank	30%	45%	18%	74%	18%	100%	2%	JVI-C	95

NOTES: 1/2-brother to Lots 54 & 55. Good growth bull.

# Jorgensen Prominent Sire Lines



**Rito N Bar**



Stemming from the Jorgensen foundation ABS sires Rito N Bar and RR Rito 0707, this pioneer performance lineage has made a monumental impact on the Angus breed for more than half of a century. This sire line spawned a host of famous sires including Rito 707 of Ideal 533 70 (Rito 149), Rito 707 of Ideal 836 71 (Rito 72), Jetliner 707 of Conanga, PBC 707 1M F0203, Rito Idealist, Rito 707 of Ideal 3407 7075, SAV Resource 1441, SAV Renown 3439, SAV Quarterback 7933, Ideal All Pro and a multitude of others.

The most prevalent lineage in the Angus breed today that was produced in the Jorgensen program stemming from the Jorgensen foundation sire Camilla Bandolier M 47X who in turn sired Band M 47 X of Ideal 53 70, the sire of Band 602 of Ideal 928 72 (Band 234) who was joined in the ABS AI Stud by his famous son Band 234 of Ideal 3163 (Band 105). The Band 105 sons QAS Traveler 23-4 and Tehama Band 155 each perpetuated lasting legacies with generations of descendants who have seen widespread use and led the breed for annual registrations.



**Band 602 of Ideal 928 72**



**Eldorado 156 of Ideal**



The Eldorado sire lineage distinguished in the Jorgensen program stems from Band 234 of Ideal 3191 (Band 116) who in turn sired the ABS sire Band 116 of Ideal 2118 7174 (Band 174). That bull's important son Eldorado 156 of Ideal, left a lasting legacy in the Jorgensen program including his famous descendent Ideal 1418 of 8103 4286, and extending further to the Pathfinder Sire Ideal 9524 of 5570 6809 and ultimately to the popular Ideal Encore of 9524 Lady who has taken his place as the highest valued bull produced in the history of the Jorgensen Angus program.

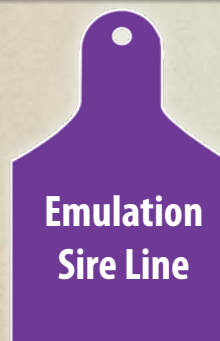
The Emulous sire lineage is widely recognized for pioneer performance and carcass genetics stemming from a heritage of world-record gaining bulls and the breed's very first Certified Meat Sires. A select assortment of Emulous bulls have been utilized very successfully in the Jorgensen program including the famous EE 30 1254 of Ideal 5254 960 who became immortalized as the sire of the legendary cow EE 4286 of Ideal 2240 1254.



**EE 30 1254 of Ideal 5254 960 (1254)**



**Emulation 31**



The Emulation sire lineage offers strong contributions to the breed in terms of fertility, maternal strength, udder quality, longevity and carcass traits. The linebred Emulation 31 bull, N Bar Emulation EXT, is the most widely used sire in the history of the Angus breed who led the breed for registrations for five consecutive years. Most recently, the sires SAV Elation 7899 and N Bar Emulation EXT A1747, have positively contributed to the Jorgensen program.



# DAKOTA TERRITORY SIRE LINE

LOT #	Bull Name	IBE Reg #	DOB	Sire Line	Sire Name
57					

OUT

LOT #	Bull Name	IBE Reg #	DOB	Sire Line	Sire Name
58	Ideal Dakota Territory 0N04	74205	04/05/2020	Dakota Territory	

BW	Adj WW	Adj YW	ADG		BW	WW	YW	SC	Milk	IMF	REA	Selection Indexes	
80	604	1124	3.37		2.1	48	96	0.67	29	0.07	0.36	JVI-H	94
<b>Ratio</b>					56%	40%	21%	15%	13%	94%	39%	JVI-C	95

**NOTES:**

LOT #	Bull Name	IBE Reg #	DOB	Sire Line	Sire Name
59	Ideal Dakota Territory 0N09	73955	03/29/2020	Dakota Territory	

BW	Adj WW	Adj YW	ADG		BW	WW	YW	SC	Milk	IMF	REA	Selection Indexes	
81	533	1030	3.29		1.6	45	86	0.40	24	0.12	0.34	JVI-H	99
<b>Ratio</b>					43%	62%	54%	41%	65%	84%	47%	JVI-C	97

**NOTES:**

LOT #	Bull Name	IBE Reg #	DOB	Sire Line	Sire Name
60	Ideal Dakota Territory 0N53	74222	04/04/2020	Dakota Territory	

BW	Adj WW	Adj YW	ADG		BW	WW	YW	SC	Milk	IMF	REA	Selection Indexes	
87	588	1140	3.62		1.6	50	92	0.47	30	0.28	0.28	JVI-H	NR
<b>Ratio</b>					42%	22%	32%	33%	8%	28%	73%	JVI-C	106

**NOTES:** Top 35% or better for 5 traits, including growth & carcass traits

LOT #	Bull Name	IBE Reg #	DOB	Sire Line	Sire Name
61	Ideal Dakota Territory 0P87	75253	03/21/2020	Dakota Territory	

BW	Adj WW	Adj YW	ADG		BW	WW	YW	SC	Milk	IMF	REA	Selection Indexes	
91	647	998	2.14		3.4	50	87	0.57	27	0.12	0.21	JVI-H	NR
<b>Ratio</b>					82%	20%	52%	22%	33%	84%	90%	JVI-C	94

**NOTES:**

# DAKOTA TERRITORY SIRE LINE

LOT #	Bull Name	IBE Reg #	DOB	Sire Line	Sire Name
62	Ideal Dakota Territory 0Q26	73710	02/27/2020	Dakota Territory	

BW	Adj WW	Adj YW	ADG		BW	WW	YW	SC	Milk	IMF	REA	Selection Indexes		
68	496	963	3.87		IBE EPDs	-2.3	34	67	0.61	27	0.18	0.36	JVI-H	105
Ratio	86	90			% Rank	1%	99%	97%	19%	26%	65%	41%	JVI-C	90

NOTES:

LOT #	Bull Name	IBE Reg #	DOB	Sire Line	Sire Name
63	Ideal Dakota Territory 0Q85	73754	01/026/2020	Dakota Territory	

BW	Adj WW	Adj YW	ADG		BW	WW	YW	SC	Milk	IMF	REA	Selection Indexes		
74	484	838	3.44		IBE EPDs	-1.7	34	72	-0.54	25	0.19	0.40	JVI-H	96
Ratio	84	78			% Rank	3%	99%	93%	100%	50%	64%	28%	JVI-C	84

NOTES:

LOT #	Bull Name	IBE Reg #	DOB	Sire Line	Sire Name
64	Ideal Dakota Territory 0R18	73784	02/14/2020	Dakota Territory	

BW	Adj WW	Adj YW	ADG		BW	WW	YW	SC	Milk	IMF	REA	Selection Indexes		
77	581	830	3.09		IBE EPDs	1.5	44	85	0.16	19	0.16	0.32	JVI-H	101
Ratio	98	77			% Rank	41%	70%	60%	91%	95%	74%	56%	JVI-C	99

NOTES:



LOT #	Bull Name	IBE Reg #	DOB	Sire Line	Sire Name
65					

OUT

LOT #	Bull Name	IBE Reg #	DOB	Sire Line	Sire Name
66	Ideal Dakota Territory 0M66	74266	05/15/2020	Dakota Territory	

BW	Adj WW	Adj YW	ADG		BW	WW	YW	SC	Milk	IMF	REA	Selection Indexes		
75	607	1148	3.30		IBE EPDs	2.4	48	101	0.88	29	0.34	0.37	JVI-H	105
Ratio	109	107			% Rank	61%	35%	9%	4%	16%	15%	38%	JVI-C	109

NOTES: Top 35% or better for 5 traits.

## EMULATION SIRE LINE

LOT #	Bull Name	IBE Reg #	DOB	Sire Line	Sire Name
67	Ideal Emulation 0S20	73649	04/05/2020	Emulation	Sinclair Piney Creek 6FV9

BW	Adj WW	Adj YW	ADG		BW	WW	YW	SC	Milk	IMF	REA	Selection Indexes		
85	578	971	2.89		IBE EPDs	2.0	45	88	0.29	22	0.29	0.14	JVI-H	101
Ratio	100	91			% Rank	51%	67%	47%	55%	82%	25%	98%	JVI-C	101

NOTES:

LOT #	Bull Name	IBE Reg #	DOB	Sire Line	Sire Name
68	Ideal Emulation 0S32	73806	03/16/2020	Emulation	Sinclair Piney Creek 6FV16

BW	Adj WW	Adj YW	ADG		BW	WW	YW	SC	Milk	IMF	REA	Selection Indexes		
86	613	998	2.94		IBE EPDs	2.2	44	81	-0.06	28	0.18	0.35	JVI-H	NR
Ratio	106	93			% Rank	58%	71%	73%	88%	22%	65%	42%	JVI-C	83

NOTES:

LOT #	Bull Name	IBE Reg #	DOB	Sire Line	Sire Name
69	Ideal Emulation 0S59	73682	03/29/2020	Emulation	Sinclair Black Iron 7UR19

BW	Adj WW	Adj YW	ADG		BW	WW	YW	SC	Milk	IMF	REA	Selection Indexes		
88	595	1011	3.09		IBE EPDs	1.6	40	64	-0.10	23	0.20	0.31	JVI-H	NR
Ratio	103	94			% Rank	42%	90%	98%	91%	72%	59%	62%	JVI-C	81

NOTES:

LOT #	Bull Name	IBE Reg #	DOB	Sire Line	Sire Name
70	Ideal Emulation 0R37	73705	03/25/2020	Emulation	Sinclair Piney Creek 6FV16

BW	Adj WW	Adj YW	ADG		BW	WW	YW	SC	Milk	IMF	REA	Selection Indexes		
79	592	990	2.99		IBE EPDs	1.5	43	83	-0.19	25	0.24	0.22	JVI-H	90
Ratio	103	92			% Rank	41%	80%	67%	94%	54%	43%	88%	JVI-C	89

NOTES:

LOT #	Bull Name	IBE Reg #	DOB	Sire Line	Sire Name
71	Ideal Emulation 0R39	73772	03/15/2020	Emulation	Sinclair Sam 8XX11

BW	Adj WW	Adj YW	ADG		BW	WW	YW	SC	Milk	IMF	REA	Selection Indexes		
79	560	971	3.16		IBE EPDs	2.5	45	78	0.29	25	0.25	0.29	JVI-H	90
Ratio	97	90			% Rank	65%	63%	81%	55%	47%	40%	67%	JVI-C	91

NOTES:

## Better Doesn't Need to Be More Complicated

How many numbers do bull buyers really want to juggle when selecting bulls? Bull selection can be as complicated as you want ... but it doesn't have to be. Our new JVI-H and JVI-C allow you to simultaneously select for more than one trait without feeling like you are trying to do algebra.

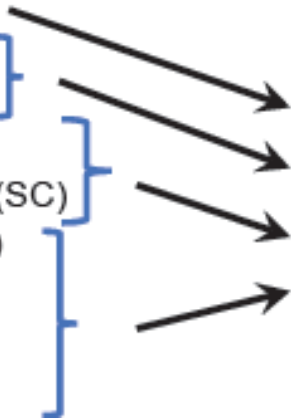
## Announcing Jorgensen Versatility Indexes • JVI-H and JVI-C

Jorgensen Versatility Indexes (**JVI**) are Selection Indexes that were created to help commercial cattlemen take advantage of the power of the Ideal Beef Evaluation without having to juggle multiple numbers. Selection Indexes are tools that help cattlemen select for multiple traits by combining those traits into one single number. Our partnership with Zoetis produced the **JVI-H**, which incorporates multiple traits and weights them with priorities that favor bulls more suitable for use on Heifers. The **JVI-C** places less emphasis on Birth Weight and allows more selection for Growth and Carcass traits.

◆ Higher Index Scores indicate greater overall genetic merit.

## GE-EPDs Incorporated in the JVI-H and JVI-C

- Birth Weight (BW)
- Weaning Weight (WW)
- Yearling Weight (YW)
- Milk (Milk)
- Scrotal Circumference (SC)
- Intramuscular Fat (IMF)
- Ribeye Area (REA)
- Rib Fat (FAT)
- Rump Fat (RFAT)



### Jorgensen Versatility Indexes

- JVI-H (Bulls for Heifers)
- JVI-C (Bulls for Cows)



**Jorgensen Land & Cattle**

**zoetis**™



**IDEAL BEEF EVALUATION**



**VERIFIED™**  
Angus Bulls Verified by DNA

**ANGUS BULLS**

LOT #	Bull Name	IBE #	Sire Line	Sire Name
72				

**OUT**

**RITO SIRE LINE**

LOT #	Bull Name	IBE Reg #	DOB	Sire Line	Sire Name
73	Ideal Rito OV88	74834	03/30/2020	Rito	Rito 8B54

BW	Adj WW	Adj YW	ADG		BW	WW	YW	SC	Milk	IMF	REA	Selection Indexes	
85	598	925	2.71	IBE EPDs	3.2	49	95	0.59	21	0.29	0.40	JVI-H	NR
Ratio	106	86		% Rank	79%	32%	22%	21%	84%	26%	26%	JVI-C	108

NOTES:

LOT #	Bull Name	IBE Reg #	DOB	Sire Line	Sire Name
74	Ideal Rito OJ63	74330	04/19/2020	Rito	Ideal 7114 REN Lady

BW	Adj WW	Adj YW	ADG		BW	WW	YW	SC	Milk	IMF	REA	Selection Indexes	
88	596	1067	2.96	IBE EPDs	2.0	49	98	0.22	24	0.27	0.38	JVI-H	NR
Ratio	99	99		% Rank	53%	31%	16%	63%	65%	31%	33%	JVI-C	110

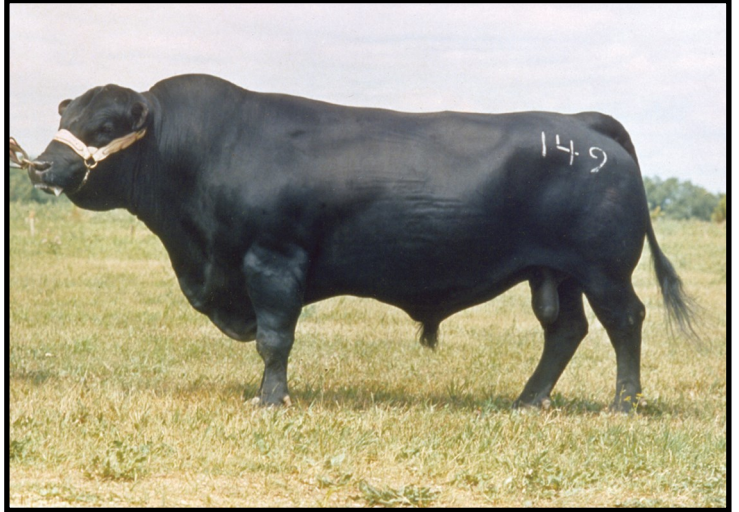
NOTES:

LOT #	Bull Name	IBE Reg #	DOB	Sire Line	Sire Name
75	Ideal Rito OJ14	74035	03/21/2020	Rito	Ideal 8082 REN Marjorie

BW	Adj WW	Adj YW	ADG		BW	WW	YW	SC	Milk	IMF	REA	Selection Indexes	
95	605	1213	4.89	IBE EPDs	4.4	50	87	0.61	28	0.33	0.34	JVI-H	NR
Ratio	106	113		% Rank	94%	21%	50%	19%	22%	16%	49%	JVI-C	94

NOTES:

# RITO SIRE LINE



LOT #	Bull Name	IBE Reg #	DOB	Sire Line	Sire Name
76					

OUT

LOT #	Bull Name	IBE Reg #	DOB	Sire Line	Sire Name
77	Ideal Rito 0J62	74296	03/30/2020	Rito	Ideal 7114 REN Lady

BW	Adj WW	Adj YW	ADG		BW	WW	YW	SC	Milk	IMF	REA	Selection Indexes		
88	674	1249	3.75		IBE EPDs	2.0	47	86	0.79	23	0.24	0.36	JVI-H	NR
Ratio	112	116			% Rank	53%	49%	53%	8%	72%	42%	40%	JVI-C	106

NOTES:

LOT #	Bull Name	IBE Reg #	DOB	Sire Line	Sire Name
78	Ideal Rito 0K52	74864	04/04/2020	Rito	Rito 8286

BW	Adj WW	Adj YW	ADG		BW	WW	YW	SC	Milk	IMF	REA	Selection Indexes		
80	621	1011	3.19		IBE EPDs	2.5	50	93	0.65	24	0.17	0.35	JVI-H	104
Ratio	110	94			% Rank	64%	23%	28%	16%	59%	71%	43%	JVI-C	106

NOTES:

LOT #	Bull Name	IBE Reg #	DOB	Sire Line	Sire Name
79	Ideal Rito 0J87	74401	03/8/2020	Rito	Ideal 8063 of REN Marjorie

BW	Adj WW	Adj YW	ADG		BW	WW	YW	SC	Milk	IMF	REA	Selection Indexes		
92	717	1294	3.87		IBE EPDs	3.7	54	110	-.04	24	0.21	0.37	JVI-H	NR
Ratio	119	121			% Rank	86%	4%	2%	87%	57%	55%	38%	JVI-C	110

NOTES:

LOT #	Bull Name	IBE Reg #	DOB	Sire Line	Sire Name
80					

OUT



Jorgensen Land & Cattle



# AMERICA'S #1 CHOICE FOR BULLS

Each & every year, Jorgensen Land & Cattle has been confirmed as the nation's largest supplier of beef bulls according to the **BEEF Seedstock 100 List**.



Jorgensen Land & Cattle earned their reputation as "The Source" for foundation genetics – the kind of genetics that you use to build a cow herd. We earned that reputation by consistently selecting our breeding stock based on –in this order– reproduction, fast growth, and a desirable carcass. Those three factors have been foremost in our breeding & selection criteria throughout our past 60+ years. Consistent testing, systematic selection, and discipline, generation after generation, have built our foundation breeding program. Our breeding program creates bulls that produce uniformity in the calf crops of our customers.



As you examine our catalog, be sure to notice the generations of consistent performance that have been stacked on top of each other.

We are **America's #1 Choice for Bulls** because we do the right things and we do them consistently – generation after generation after generation.

## A Breeding Program at Work



Progeny Ratios

BW - WW - YW  
98 - 101 - 102

BW - WW - YW  
98 - 100 - 102

BW - WW - YW  
97 - 102 - 101

BW - WW - YW  
100 - 106 - 102

BW - WW - YW  
99 - 100 - 101

BW - WW - YW  
92 - 100 - 102

BW - WW - YW  
103 - 102 - 103

BW - WW - YW  
84 - 96 - 104

BW - WW - YW  
98 - 99 - 99

BW - WW - YW  
100 - 101 - 102

BW - WW - YW  
99 - 100 - 101

BW - WW - YW  
103 - 114 - 107

BW - WW - YW  
98 - 100 - 101

BW - WW - YW  
100 - 106 - 102

BW - WW - YW  
99 - 114 - 107

BW - WW - YW  
100 - 101 - 101

BW - WW - YW  
99 - 100 - 101

BW - WW - YW  
100 - 101 - 101

BW - WW - YW  
99 - 105 - 101

BW - WW - YW  
98 - 99 - 99

BW - WW - YW  
92 - 97 - 102

BW - WW - YW  
88 - 101 - 101

BW - WW - YW  
100 - 101 - 102

BW - WW - YW  
112 - 101 - 105

BW - WW - YW  
100 - 101 - 102

BW - WW - YW  
95 - 113 - 115

BW - WW - YW  
101 - 105 - 104

BW - WW - YW  
101 - 107 - 111

BW - WW - YW  
102 - 100 - 102

BW - WW - YW  
106 - 99 - 109

BW - WW - YW  
100 - 101 - 102

BW - WW - YW  
95 - 113 - 115

Encore Produces Like He Was Bred to Produce



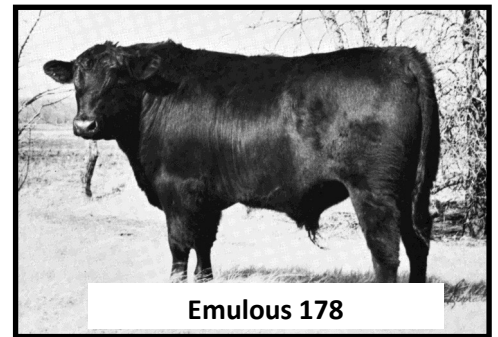
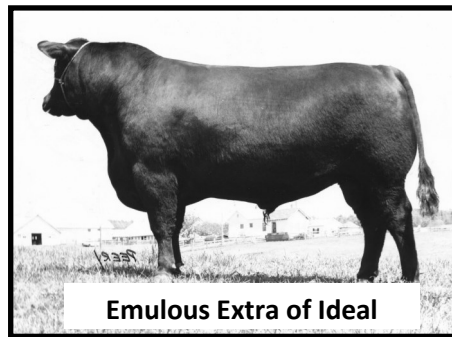
Jorgensen Land & Cattle

Semen Available Through **GENEX**

LOT #	Bull Name	IBE Reg #	DOB	Sire Line	Sire Name
81	Ideal Emulous 0J17	74045	03/07/2020	Emulous	Ideal 8629 of 5609 Blkbrd

BW	Adj WW	Adj YW	ADG		BW	WW	YW	SC	Milk	IMF	REA	Selection Indexes		
98	589	1227	5.55		IBE EPDs	3.9	53	95	0.00	20	0.35	0.45	JVI-H	NR
Ratio	103	114			% Rank	88%	7%	23%	84%	93%	12%	16%	JVI-C	114

**NOTES:** This bull should put pounds on a calf crop (Top 7% for WW and Top 23% for YW) and add value to the carcass (Top 12% IMF and Top 16% for REA).



LOT #	Bull Name	IBE Reg #	DOB	Sire Line	Sire Name
82	Ideal Emulous 0J33	74466	03/10/2020	Emulous	Ideal 5601 of 1281 Blkbrd

BW	Adj WW	Adj YW	ADG		BW	WW	YW	SC	Milk	IMF	REA	Selection Indexes		
99	564	1178	5.37		IBE EPDs	4.2	53	102	0.36	23	0.28	0.38	JVI-H	NR
Ratio	99	110			% Rank	92%	6%	8%	46%	69%	29%	34%	JVI-C	108

**NOTES:** Another bull that will generate heavy calf crops (Top 6% WW and Top 8% YW) and they should perform on the rail, too (Top 30% IMF and Top 34% REA).

LOT #	Bull Name	IBE Reg #	DOB	Sire Line	Sire Name
83	Ideal Emulous 0P31	75259	03/12/2020	Emulous	Ideal 3257 of 1281 Jilt

BW	Adj WW	Adj YW	ADG		BW	WW	YW	SC	Milk	IMF	REA	Selection Indexes		
85	609	1028	2.63		IBE EPDs	1.8	48	89	-0.20	27	0.11	0.29	JVI-H	93
Ratio	99	96			% Rank	47%	31%	45%	94%	28%	87%	69%	JVI-C	93

**NOTES:**

LOT #	Bull Name	IBE Reg #	DOB	Sire Line	Sire Name
84	Ideal Emulous 0A58	74019	03/15/2020	Emulous	Ideal 8629 of 5609 Blkbrd

BW	Adj WW	Adj YW	ADG		BW	WW	YW	SC	Milk	IMF	REA	Selection Indexes		
89	573	1075	4.18		IBE EPDs	3.9	51	95	0.00	20	0.40	0.52	JVI-H	NR
Ratio	100	100			% Rank	88%	16%	24%	84%	93%	6%	6%	JVI-C	113

**NOTES:** Bull that projects better than Top 25% for WW & YW, and Top 6% for both IMF and REA

LOT #	Bull Name	IBE Reg #	DOB	Sire Line	Sire Name
85					

**OUT**



# EMULOUS SIRE LINE



LOT #	Bull Name	IBE Reg #	DOB	Sire Line	Sire Name
86					

OUT

LOT #	Bull Name	IBE Reg #	DOB	Sire Line	Sire Name
87	Ideal Emulous 0E55	74565	03/12/2020	Emulous	Ideal 6567 of 1262 Marjorie

BW	Adj WW	Adj YW	ADG	IBE EPDs	BW	WW	YW	SC	Milk	IMF	REA	Selection Indexes	
86	643	994	1.96		0.7	42	90	0.46	25	0.19	0.37	JVI-H	NR
Ratio	105	93		% Rank	24%	84%	39%	34%	48%	64%	35%	JVI-C	97

NOTES:

LOT #	Bull Name	IBE Reg #	DOB	Sire Line	Sire Name
88	Ideal Emulous 0J27	74104	03/13/2020	Emulous	Ideal 5601 of 1281 Blkbrd

BW	Adj WW	Adj YW	ADG	IBE EPDs	BW	WW	YW	SC	Milk	IMF	REA	Selection Indexes	
98	640	1370	6.09		4.3	49	91	0.42	25	0.36	0.23	JVI-H	NR
Ratio	112	128		% Rank	92%	27%	38%	39%	48%	11%	86%	JVI-C	98

NOTES: 2nd heaviest Adj. 365d YW bull in the sale and 3rd highest ADG bull in the sale. His calves should grow and grade (Top 11% IMF EPD).

LOT #	Bull Name	IBE Reg #	DOB	Sire Line	Sire Name
89	Ideal Wye 0Q34	73704	01/21/2020	Wye	Poss Achievement

BW	Adj WW	Adj YW	ADG	IBE EPDs	BW	WW	YW	SC	Milk	IMF	REA	Selection Indexes	
69	486	863	3.80		1.7	35	64	-0.06	29	0.19	0.31	JVI-H	94
Ratio	84	80		% Rank	3%	99%	98%	88%	15%	63%	58%	JVI-C	81

NOTES:

LOT #	Bull Name	IBE Reg #	DOB	Sire Line	Sire Name
90	Ideal Wye 0R10	73814	04/01/2020	Wye	Sitz Stellar 726D

BW	Adj WW	Adj YW	ADG	IBE EPDs	BW	WW	YW	SC	Milk	IMF	REA	Selection Indexes	
76	636	923	2.23		-0.7	37	82	0.55	28	0.08	0.28	JVI-H	96
Ratio	110	86		% Rank	8%	97%	70%	24%	20%	92%	70%	JVI-C	86

NOTES:

LOT #	Bull Name	IBE Reg #	DOB	Sire Line	Sire Name
91	Ideal Traveler 0G44	75168	04/02/2020	Traveler	Ideal 8230 of 1168 Blkbd

BW	Adj WW	Adj YW	ADG		BW	WW	YW	SC	Milk	IMF	REA	Selection Indexes		
87	603	926	2.02		IBE EPDs	3.2	48	89	0.22	30	0.20	0.30	JVI-H	NR
Ratio	105	86			% Rank	79%	38%	43%	63%	6%	59	32%	JVI-C	88

NOTES:

LOT #	Bull Name	IBE Reg #	DOB	Sire Line	Sire Name
92	Ideal Traveler 0D75	74947	05/12/2020	Traveler	Ideal 4334 of Guru 3458

BW	Adj WW	Adj YW	ADG		BW	WW	YW	SC	Milk	IMF	REA	Selection Indexes		
92	662	1106	3.06		IBE EPDs	4.0	54	107	1.33	30	0.18	0.34	JVI-H	98
Ratio	116	103			% Rank	90%	4%	3%	>1%	8%	68%	48%	JVI-C	106

NOTES:

LOT #	Bull Name	IBE Reg #	DOB	Sire Line	Sire Name
93	Ideal Traveler 0A90	74079	03/07/2020	Traveler	Hoos Incentive 708 TE43

BW	Adj WW	Adj YW	ADG		BW	WW	YW	SC	Milk	IMF	REA	Selection Indexes		
95	565	1171	5.32		IBE EPDs	5.1	51	106	0.85	20	0.13	0.33	JVI-H	NR
Ratio	99	109			% Rank	97%	13%	4%	5%	90%	81%	52%	JVI-C	105

NOTES:

LOT #	Bull Name	IBE Reg #	DOB	Sire Line	Sire Name
94	Ideal Traveler 0J56	74442	03/11/2020	Traveler	Barstow Bankroll B73

BW	Adj WW	Adj YW	ADG		BW	WW	YW	SC	Milk	IMF	REA	Selection Indexes		
86	626	1257	4.51		IBE EPDs	2.1	47	88	0.08	24	0.13	0.29	JVI-H	NR
Ratio	104	117			% Rank	53%	46%	48%	77%	65%	82%	69%	JVI-C	97

NOTES:

LOT #	Bull Name	IBE Reg #	DOB	Sire Line	Sire Name
95	Ideal Traveler 0S75	73843	04/13/2020	Traveler	Sitz Whitlock 606F

BW	Adj WW	Adj YW	ADG		BW	WW	YW	SC	Milk	IMF	REA	Selection Indexes		
90	663	1113	3.22		IBE EPDs	2.1	47	88	0.50	28	0.25	0.37	JVI-H	NR
Ratio	115	104			% Rank	56%	42%	47%	30%	19%	41%	36%	JVI-C	99

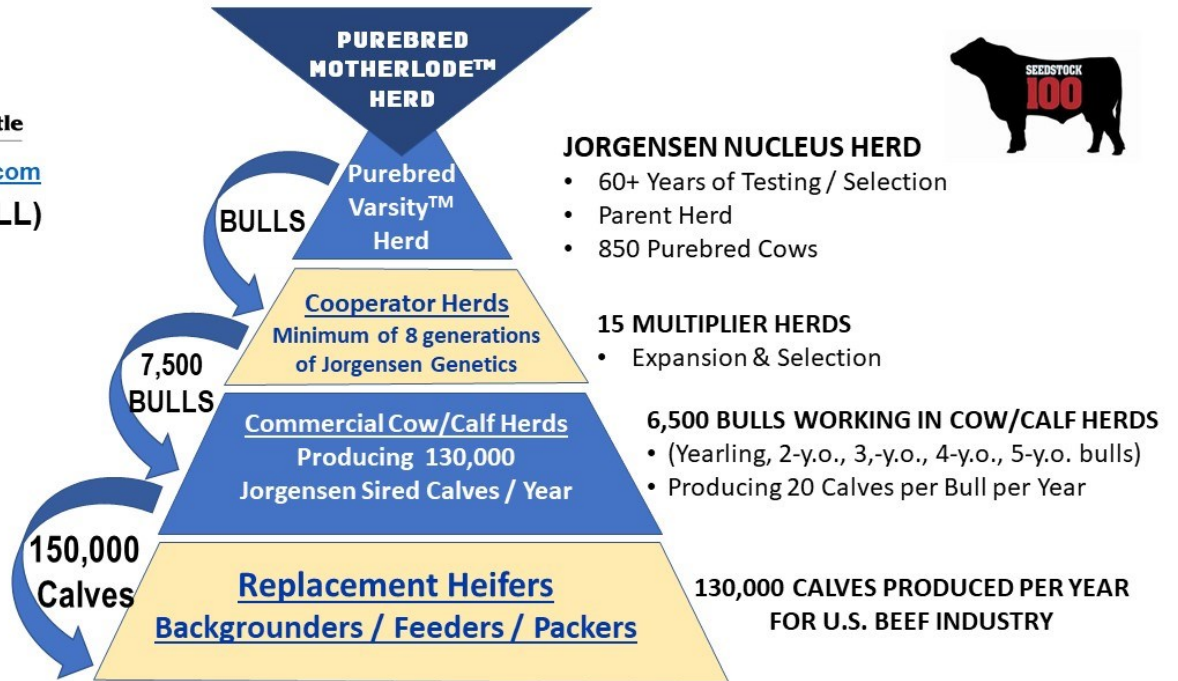
NOTES:



**Jorgensen Land & Cattle**  
PARTNERSHIP

[www.jorgensenfarms.com](http://www.jorgensenfarms.com)

800-548 2855 (BULL)



Each year, Jorgensen bulls sire roughly 150,000 calves across the U.S., calves that build beef cow herds and calves that produce healthy, delicious steaks, roasts, and burgers. That level of influence is something we take seriously, and that is why we never stop searching for ways to improve our genetics and their positive impacts on your cattle operation and the U.S. Beef Industry.





LOT #	Bull Name	IBE Reg #	DOB	Sire Line	Sire Name
96	Ideal Eldorado 0D79	74987	04/27/2020	Eldorado	Ideal 6826 of 3444 Marjorie

BW	Adj WW	Adj YW	ADG		BW	WW	YW	SC	Milk	IMF	REA	Selection Indexes		
94	598	951	2.57		IBE EPDs	4.7	57	111	0.32	27	0.18	0.34	JVI-H	NR
Ratio	105	89			% Rank	96%	1%	1%	50%	30%	67%	46%	JVI-C	106

**NOTES:** High Growth bull (Top 1% WW & YW), who should sire wet daughters.

LOT #	Bull Name	IBE Reg #	DOB	Sire Line	Sire Name
97	Ideal Eldorado 0Y03	75414	03/31/2020	Eldorado	Ideal 8766 of 5760 Jilt

BW	Adj WW	Adj YW	ADG		BW	WW	YW	SC	Milk	IMF	REA	Selection Indexes		
70	614	857	2.15		IBE EPDs	-0.3	42	82	0.38	28	0.38	0.35	JVI-H	105
Ratio	107	80			% Rank	12%	85%	70%	43%	17%	8%	43%	JVI-C	99

**NOTES:** Low BW Ideal Encore son who should produce wet daughters, and calves that make the grade

LOT #	Bull Name	IBE Reg #	DOB	Sire Line	Sire Name
98	Ideal Eldorado 0Y15	75341	03/17/2020	Eldorado	Ideal 3444 of 5570 Jilt

BW	Adj WW	Adj YW	ADG		BW	WW	YW	SC	Milk	IMF	REA	Selection Indexes		
75	491	759	2.39		IBE EPDs	-0.2	40	79	0.44	28	0.17	0.22	JVI-H	99
Ratio	86	71			% Rank	13%	90%	79%	37%	25%	70%	89%	JVI-C	91

**NOTES:** Low BW bull who should produce wet daughters

LOT #	Bull Name	IBE Reg #	DOB	Sire Line	Sire Name
99	Ideal Eldorado 0A07	73985	03/15/2020	Eldorado	Hoos Double Duty 716 CF47

BW	Adj WW	Adj YW	ADG		BW	WW	YW	SC	Milk	IMF	REA	Selection Indexes		
83	580	1343	6.36		IBE EPDs	1.5	48	88	0.27	28	0.20	0.13	JVI-H	99
Ratio	102	125			% Rank	40%	36%	45%	57%	25%	59%	98%	JVI-C	98

**NOTES:** 3rd heaviest Adj. 365d YW in the sale and 2nd highest ADG on test. This bulls calves should GROW!

## DAKOTA TERRITORY BULLS

LOT #	Bull Name	IBE Reg #	DOB	Sire Line	Sire Name
<b>100</b>	Ideal Dakota Territory 0J21	74518	03/30/2019	Dakota Territory	

BW	Adj WW	Adj YW	ADG		BW	WW	YW	SC	Milk	IMF	REA	Selection Indexes		
83	740	1237	5.00		IBE EPDs	1.7	48	94	0.39	29	0.35	0.18	JVI-H	101
Ratio	134	115			% Rank	45%	49%	36%	53%	17%	40%	90%	JVI-C	101

**NOTES: 5.0 lb ADG**

LOT #	Bull Name	IBE Reg #	DOB	Sire Line	Sire Name
<b>101</b>	Ideal Dakota Territory 0J11	74031	03/21/2020	Dakota Territory	

BW	Adj WW	Adj YW	ADG		BW	WW	YW	SC	Milk	IMF	REA	Selection Indexes		
95	594	1280	5.54		IBE EPDs	3.6	51	90	0.06	23	0.13	0.31	JVI-H	NR
Ratio	104	119			% Rank	85%	14%	39%	79%	74%	81%	60%	JVI-C	98

**NOTES: Over 5.5 lb ADG**

LOT #	Bull Name	IBE Reg #	DOB	Sire Line	Sire Name
<b>102</b>	Ideal Dakota Territory 0A50	74469	03/21/2020	Dakota Territory	

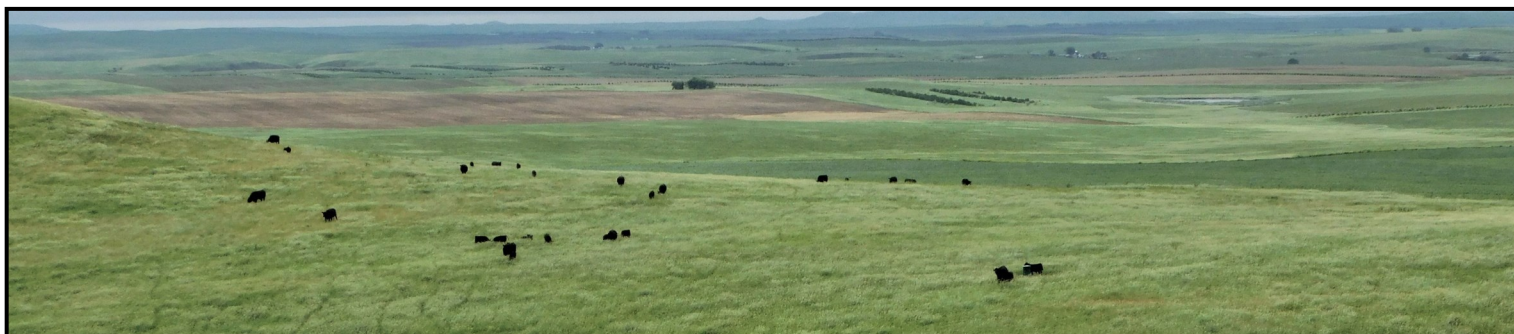
BW	Adj WW	Adj YW	ADG		BW	WW	YW	SC	Milk	IMF	REA	Selection Indexes		
89	597	1322	5.96		IBE EPDs	1.7	49	98	0.71	24	0.23	0.27	JVI-H	NR
Ratio	104	123			% Rank	45%	32%	15%	12%	58%	48%	74%	JVI-C	112

**NOTES: #5 ranked bull for ADG and 4th heaviest Adj 365d YW bull in this sale**

LOT #	Bull Name	IBE Reg #	DOB	Sire Line	Sire Name
<b>103</b>	Ideal Dakota Territory 0L90	74527	03/08/2020	Dakota Territory	

BW	Adj WW	Adj YW	ADG		BW	WW	YW	SC	Milk	IMF	REA	Selection Indexes		
83	558	1236	6.00		IBE EPDs	3.0	48	82	0.24	29	0.20	0.34	JVI-H	NR
Ratio	98	115			% Rank	74%	40%	69%	61%	15%	58%	49%	JVI-C	88

**NOTES: Tied for 4th highest gaining bull in this sale, at 6.00 lbs ADG**



## DAKOTA TERRITORY BULLS

LOT #	Bull Name	IBE Reg #	DOB	Sire Line	Sire Name
104	Ideal Dakota Territory 0M23	73887	03/30/2019	Dakota Territory	

BW	Adj WW	Adj YW	ADG		BW	WW	YW	SC	Milk	IMF	REA	Selection Indexes		
83	740	996	2.40		IBE EPDs	1.7	48	94	0.39	29	0.35	0.18	JVI-H	101
Ratio	134	93			% Rank	45%	49%	36%	53%	17%	40%	90%	JVI-C	101

NOTES:

LOT #	Bull Name	IBE Reg #	DOB	Sire Line	Sire Name
105					

OUT



Jorgensen Land & Cattle

LOT #	Bull Name	IBE Reg #	DOB	Sire Line	Sire Name
106					

OUT

LOT #	Bull Name	IBE Reg #	DOB	Sire Line	Sire Name
107	Ideal Dakota Territory 0L78	74533	03/01/2020	Dakota Territory	

BW	Adj WW	Adj YW	ADG		BW	WW	YW	SC	Milk	IMF	REA	Selection Indexes		
81	601	1158	4.96		IBE EPDs	0.4	43	80	0.77	27	0.15	0.37	JVI-H	104
Ratio	105	1028			% Rank	20%	75%	75%	8%	33%	77%	36%	JVI-C	98

NOTES: Good JVI-H score. Low BW and should produce wet daughters.



LOT #	Bull Name	AAA Reg #	DOB	Sire Line	Sire Name
108	Ideal 0645 Traveler of 4223	19870205	02/21/2020	Traveler	Ideal 4223 of 1168 Blkbrd

BW	Adj WW	Adj YW	ADG		BW	WW	YW	SC	Milk	IMF	REA	Selection Indexes	
83	596	1075	3.03	IBE EPDs	1.1	43	83	0.25	28	0.13	0.28	JVI-H	92
Ratio	104	100		% Rank	31%	79%	65%	59%	21%	83%	73%	JVI-C	89

NOTES:

LOT #	Bull Name	IBE Reg #	DOB	Sire Line	Sire Name
109					

**OUT**

LOT #	Bull Name	IBE Reg #	DOB	Sire Line	Sire Name
110	Ideal Rito 0B39	74309	04/10/2020	Rito	Ideal 7114 of REN Lady

BW	Adj WW	Adj YW	ADG		BW	WW	YW	SC	Milk	IMF	REA	Selection Indexes	
77	578	1126	3.54	IBE EPDs	0.4	45	88	0.44	19	0.29	0.44	JVI-H	122
Ratio	96	105		% Rank	20%	60%	48%	36%	96%	25%	34%	JVI-C	118

NOTES: Low BW bull that has the genetics to sire calves that grade with muscle.

LOT #	Bull Name	IBE Reg #	DOB	Sire Line	Sire Name
111	Ideal Ideal 0961 Emulous of 6645	1997232	04/17/2020	Emulous	Ideal 6645 of 1281 Belle

BW	Adj WW	Adj YW	ADG		BW	WW	YW	SC	Milk	IMF	REA	Selection Indexes	
95	641	1079	2.73	IBE EPDs	4.4	53	103	0.14	21	0.17	0.36	JVI-H	NR
Ratio	112	101		% Rank	94%	8%	7%	71%	86%	71%	39%	JVI-C	103

NOTES: Here's one heck of a growth bull

LOT #	Bull Name	IBE Reg #	DOB	Sire Line	Sire Name
112					

**OUT**

LOT #	Bull Name	IBE Reg #	DOB	Sire Line	Sire Name
113	Ideal Rito 0S07	73866	03/16/2020	Rito	UV Renown 988

BW	Adj WW	Adj YW	ADG		BW	WW	YW	SC	Milk	IMF	REA	Selection Indexes	
85	628	905	2.15	IBE EPDs	2.4	47	92	0.28	23	0.15	0.37	JVI-H	98
Ratio	109	84		% Rank	63%	42%	31%	56%	73%	77%	37%	JVI-C	100

NOTES:



Jorgensen Land & Cattle

Lot #	Brand	Adj WW	WW ratio	Wean WDA	Adj YW	YW ratio	ADG	AgBoost
1	0443	769	136	3.22	1238	115	2.88	5.45
2	0460	473	84	1.90	980	91	3.45	5.56
3	0487	566	100	2.33	1018	95	2.87	7.15
4	0955	643	114	2.70	1019	95	2.33	6.39
5	0931	690	122	2.95	1066	99	2.33	6.53
6	0P71	596	106	2.47	1015	95	2.65	5.36
7	0309	663	118	2.82	1196	112	3.49	5.64
8	0772	620	110	2.61	1058	99	2.77	6.28
9	0750	614	109	2.58	1012	94	2.47	4.72
10	0L19	486	86	2.03	1152	107	6.00	4.97
11	0B19	608	108	2.61	1170	109	3.96	4.87
12	0L33	434	77	1.77	1041	97	5.85	5.55
13	0L21	542	96	2.30	1227	114	5.11	6.28
14	0B76	658	117	2.81	1095	102	2.71	6.32
15	0M12	651	115	2.83	1048	98	2.46	6.70
17	0E34	664	118	2.84	1070	100	2.40	4.98
18	0R38	602	107	2.55	918	86	1.90	6.17
19	0Q57	448	79	1.83	921	86	3.27	4.68
20	0A06	473	84	1.90	1273	119	5.89	4.81
21	0L49	476	84	1.94	1070	100	4.89	6.18
22	0F56	577	102	2.43	1104	103	3.27	6.93
23	0L73	511	91	2.11	1054	98	4.78	5.08
24	0L47	526	93	2.19	1194	111	5.07	6.43
25	0R04	520	92	2.17	1012	94	3.74	5.96
26	0458	530	94	2.28	997	93	3.07	5.00
27	0465	412	73	1.65	1087	101	3.08	4.94
28	0480	580	103	2.27	997	93	2.65	5.26
29	0497	500	89	2.04	939	88	2.78	4.36
30	0637	656	116	2.79	1076	100	2.60	4.92
31	0715	615	109	2.56	1023	95	2.55	4.85
32	0Q39	398	71	1.60	999	93	4.14	4.84
34	0J08	535	95	2.15	1155	108	4.59	4.99
35	0M02	608	108	2.66	1154	108	3.52	5.66
36	0M51	558	99	2.36	983	92	2.70	5.91
37	0Q28	541	96	2.31	903	84	2.25	5.46
38	0P61	576	102	2.37	990	92	2.63	6.61
39	0J30	607	108	2.46	1313	122	5.11	6.68
40	0J68	578	103	2.39	901	84	1.93	5.74
41	0P44	717	127	3.07	1067	99	2.19	5.29
42	0Q93	571	101	2.42	909	85	2.08	4.73
43	0Q94	538	96	2.26	1121	105	3.57	4.58
44	0S86	615	109	2.54	1067	99	2.86	4.42
45	0A55	537	95	2.19	1246	116	5.64	6.21
46	0A96	556	99	2.25	1437	134	6.59	6.28





Jorgensen Land & Cattle

Lot #	Brand	Adj WW	WW ratio	Wean WDA	Adj YW	YW ratio	ADG	AgBoost
47	0A33	557	99	2.30	1319	123	5.54	6.30
48	0488	689	122	2.88	1031	96	2.08	6.72
50	0642	657	116	2.71	1049	98	2.42	6.03
51	0640	685	122	2.82	1012	94	1.94	5.12
52	0785	670	119	2.83	1056	98	2.33	5.52
53	0650	555	98	2.33	992	92	2.76	5.30
54	0757	634	112	2.71	1070	100	2.73	5.21
55	0752	646	115	2.76	1148	107	3.20	6.38
56	0769	572	101	2.38	1006	94	2.77	5.54
58	0N04	604	107	2.56	1124	105	3.37	6.63
59	0N09	533	94	2.20	1030	96	3.29	5.07
60	0N53	588	104	2.44	1140	106	3.62	6.67
61	0P87	647	115	2.71	998	93	2.14	5.42
62	0Q26	426	76	1.75	963	90	3.87	5.24
63	0Q85	414	73	1.66	838	78	3.44	4.58
64	0R18	411	73	1.63	830	77	3.09	3.74
66	0M66	607	108	2.59	1148	107	3.30	7.40
67	0S20	508	90	2.06	971	91	2.89	4.58
68	0S32	543	96	2.23	998	93	2.94	5.10
69	0S59	525	93	2.13	1011	94	3.09	3.84
70	0R37	522	93	2.16	990	92	2.99	4.88
71	0R39	490	87	2.00	971	90	3.16	5.58
73	0V88	523	93	2.13	925	86	2.71	5.99
74	0J63	596	106	2.48	1067	99	2.96	5.79
75	0J14	530	94	2.12	1213	113	4.89	5.95
77	0J62	674	120	2.86	1249	116	3.75	5.96
78	0K52	546	97	2.27	1011	94	3.19	5.87
79	0J87	717	127	3.05	1294	121	3.87	5.49
81	0J17	514	91	2.03	1227	114	5.55	5.67
82	0J33	489	87	1.90	1178	110	5.37	6.08
83	0P31	609	108	2.56	1028	96	2.63	4.77
84	0A58	498	88	2.00	1075	100	4.18	5.80
87	0E55	643	114	2.72	994	93	1.96	5.42
88	0J27	564	100	2.27	1370	128	6.09	5.28
89	0Q34	416	74	1.69	863	80	3.80	5.13
90	0R10	566	100	2.39	923	86	2.23	5.88
91	0G44	603	107	2.51	926	86	2.02	5.99
92	0D75	592	105	2.44	1106	103	3.06	6.36
93	0A90	490	87	1.93	1171	109	5.32	6.12
94	0J56	626	111	2.63	1257	117	4.51	4.94
95	0S75	593	105	2.45	1113	104	3.22	6.02
96	0D79	528	94	2.12	951	89	2.57	6.16
97	0Y03	514	91	2.16	857	80	2.15	5.48
98	0Y15	391	69	1.54	759	71	2.39	4.79

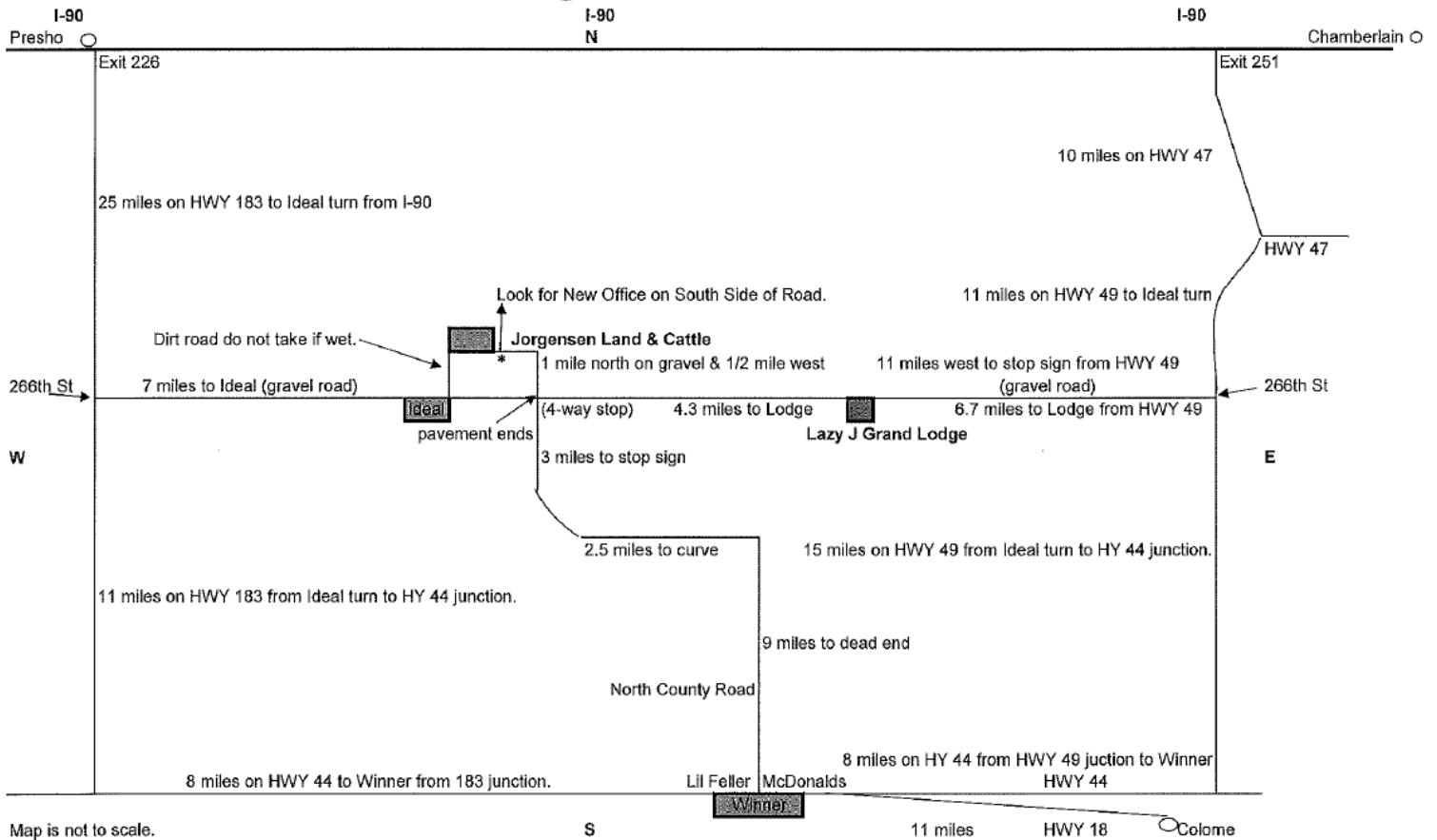


Jorgensen Land & Cattle

Lot #	Brand	Adj WW	WW ratio	Wean WDA	Adj YW	YW ratio	ADG	AgBoost
99	0A07	505	90	2.06	1343	125	6.36	4.31
100	0J21	507	90	1.97	1237	115	5.00	7.06
101	0J11	519	92	2.07	1280	119	5.54	4.48
102	0A50	522	93	2.11	1322	123	5.96	6.87
103	0L90	483	86	1.95	1236	115	6.00	6.05
104	0M23	617	109	2.67	996	93	2.40	6.21
107	0L78	526	93	2.17	1158	108	4.96	5.92
108	0645	596	106	2.50	1075	100	3.03	5.45
110	0B39	578	103	2.45	1126	105	3.54	6.26
111	0961	641	114	2.67	1079	101	2.73	5.27
113	0S07	558	99	2.31	905	84	2.15	4.62



# Directions to Jorgensen Land & Cattle



Watch & bid online for FREE at

**DVAuction**  
Broadcasting Real-Time Auctions

Can't make the sale? Bid from home with DVAuction's "real time" internet Bidding Service

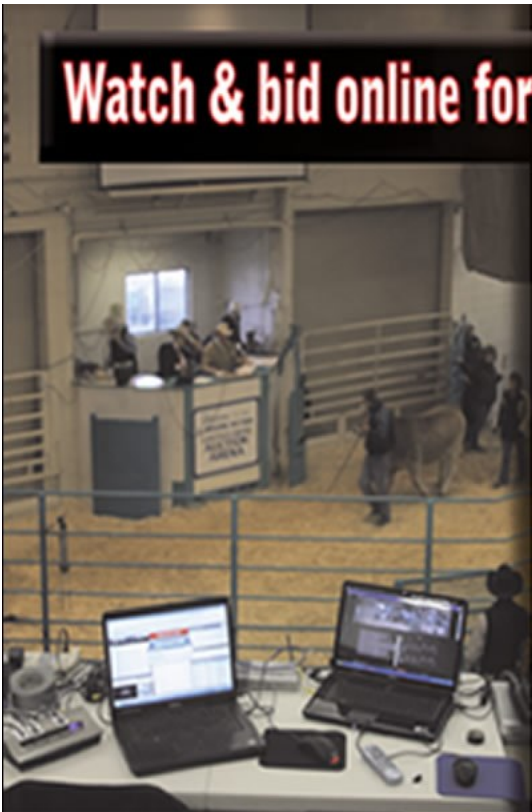
Buying is as easy as 1, 2, 3...

1. Create an account at [www.dvauction.com](http://www.dvauction.com) under the "Create New Account" tab
2. Apply for bidding approval by clicking on the "Apply for Bidding" tab at least 24 hours prior to the auction. A DV representative will notify you once you have been approved
3. Tune in for the sale and make your purchases

After the sale, contact the sale manager or owner to arrange transportation and payment. **High Speed Internet** is required for successful bidding.

**Proxy Bidding**- If you can't make time to watch the sale, register a proxy bid and let our system represent your bid while you're away

**Having troubles?** During the auction, you can type a message to the operator at any time for assistance. Our full-time support team can also always be reached at (402) 316-5460.



**DVAuction**  
Broadcasting Real-Time Auctions

The Livestock Industry's Leading Online Marketplace!

Jorgensen Land & Cattle

31250 265th St.

Ideal, ST 57541

**SMARTBULLS®**

**SALE**

**SEPTEMBER 30, 2022**

**SMARTBULLS®**

**BREED  
MORE**

**PAMPER  
LESS**

***DVAuction***  
*Broadcasting Real-Time Auctions*

**SELLING 99**

**VERIFIED™ ANGUS  
SMARTBULLS®**

**SEPTEMBER 30, 2022**



**Jorgensen Land & Cattle**